

UNITED STATES
DEPARTMENT OF THE INTERIOR
GEOLOGICAL SURVEY

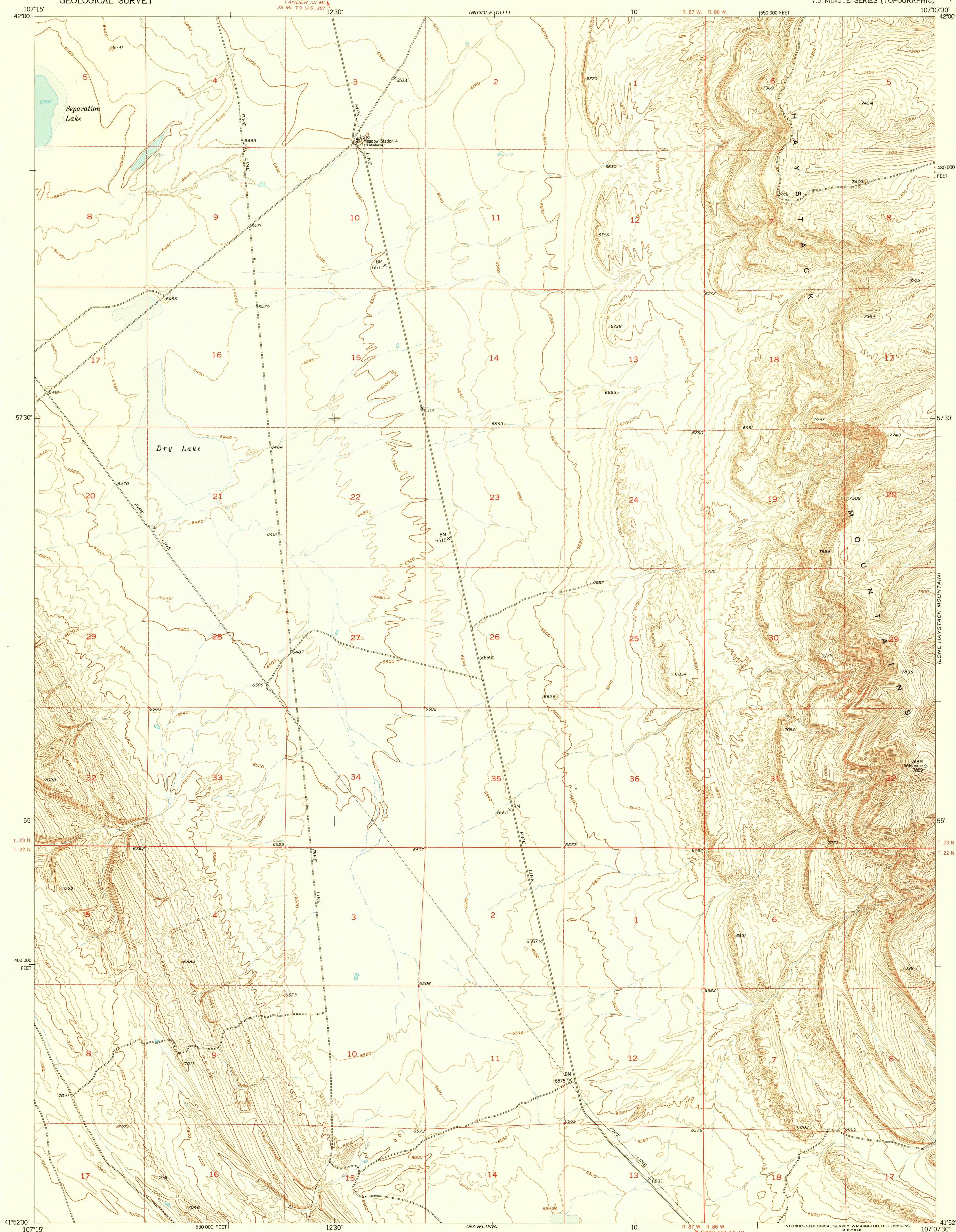
RAWLINS NW QUADRANGLE
WYOMING-CARBON CO.
7.5 MINUTE SERIES (TOPOGRAPHIC)

U.S.G.S.
FILE COPY
TOPOGRAPHIC DIVISION

RETURN TO:
USGS HISTORICAL MAP ARCHIVES

U.S.G.S.
FILE COPY
TOPOGRAPHIC DIVISION

FEB 21 1955



Mapped, edited, and published by the Geological Survey
as part of the Department of the Interior program
for the development of the Missouri River Basin
Control by USGS and USC&GS

Topography from aerial photographs by multiplex methods
Aerial photographs taken 1949. Field check 1953

Polyconic projection. 1927 North American datum
10,000-foot grid based on Wyoming coordinate system,
east central zone

Dashed land lines indicate approximate locations
Unchecked elevations are shown in brown

TRUE NORTH
MAGNETIC NORTH
APPROXIMATE MEAN
DECLINATION, 1953

SCALE 1:24,000
1 0 1000 2000 3000 4000 5000 6000 7000 FEET
1 0 5 10 KILOMETER
CONTOUR INTERVAL 20 FEET
DATUM IS MEAN SEA LEVEL

WYOMING
QUADRANGLE LOCATION

ROAD CLASSIFICATION
Heavy-duty 4 LANE 16 LANE Light-duty
Medium-duty 4 LANE 16 LANE Unimproved dirt
U. S. Route State Route

RAWLINS NW, WYO.
N4152.5-W10707.5/7.5

1953