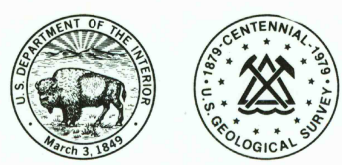
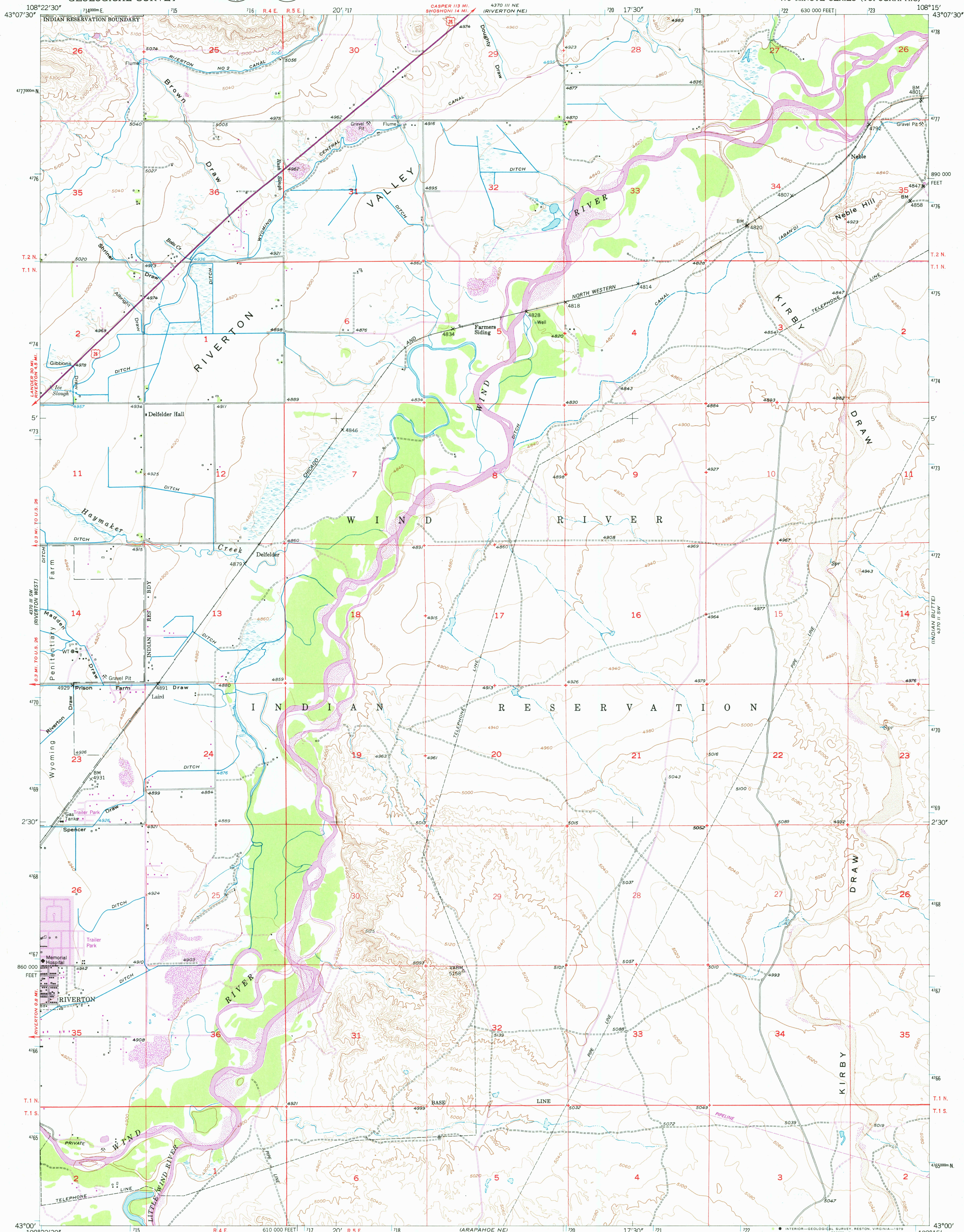


UNITED STATES  
DEPARTMENT OF THE INTERIOR  
GEOLOGICAL SURVEY



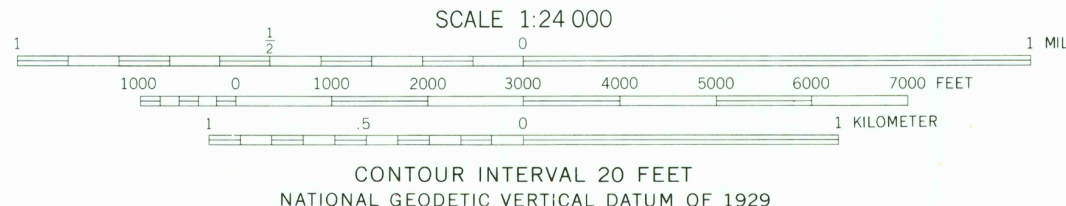
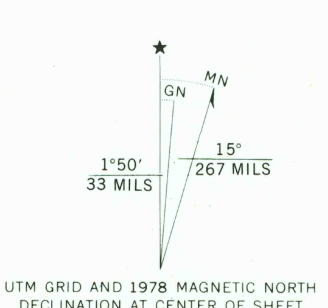
RIVERTON EAST QUADRANGLE  
WYOMING-FREMONT CO.  
7.5 MINUTE SERIES (TOPOGRAPHIC)



Mapped, edited, and published by the Geological Survey  
as part of the Department of the Interior program  
for the development of the Missouri River Basin

Control by USGS and NOS/ NOAA  
Topography from aerial photographs by multiplex methods,  
and plane-table surveys 1950  
Aerial photographs taken 1948. Field check 1950  
Polyconic projection. 1927 North American datum  
10,000-foot grid based on Wyoming coordinate system,  
west central zone  
1000-meter Universal Transverse Mercator grid ticks,  
zone 12, shown in blue

Revisions shown in purple compiled from aerial photographs taken  
1975. Map edited 1978. This information not field checked  
Purple tint indicates extension of urban areas



CONTOUR INTERVAL 20 FEET  
NATIONAL GEODETIC VERTICAL DATUM OF 1929

THIS MAP COMPLIES WITH NATIONAL MAP ACCURACY STANDARDS  
FOR SALE BY U. S. GEOLOGICAL SURVEY, DENVER, COLORADO 80225, OR RESTON, VIRGINIA 22092  
A FOLDER DESCRIBING TOPOGRAPHIC MAPS AND SYMBOLS IS AVAILABLE ON REQUEST

ROAD CLASSIFICATION  
Heavy-duty 4 LANE 6 LANE Light-duty  
Medium-duty 4 LANE 6 LANE Unimproved dirt  
U. S. Route State Route

USGS  
Historical File  
Topographic Division

RIVERTON EAST, WYO.  
N4300-W10815/7.5

1950  
PHOTOREVISED 1978  
DMA 4370 III SE-SERIES V874

SEP 19 1979

USGS AND HISTORICAL MAP ARCHIVES