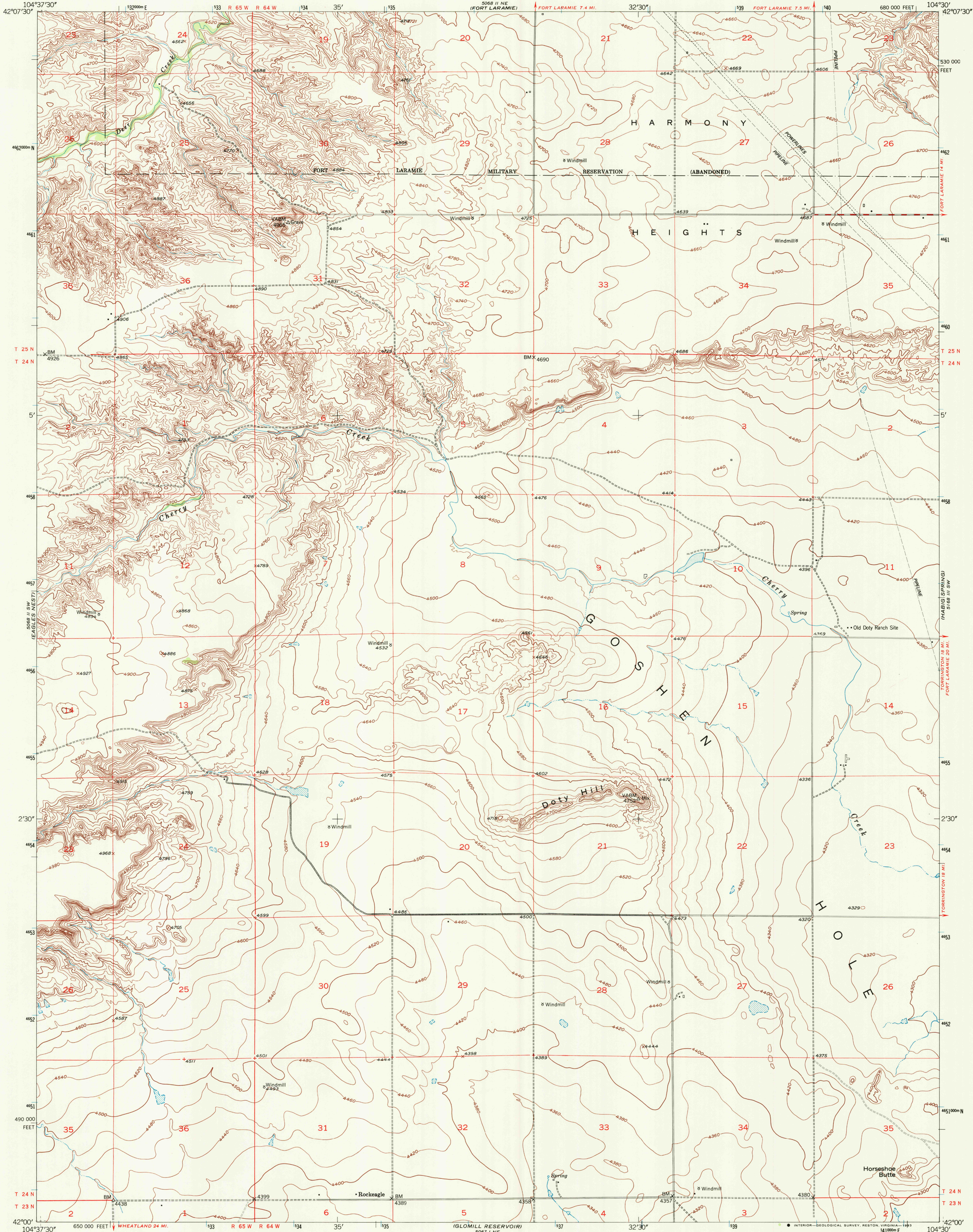
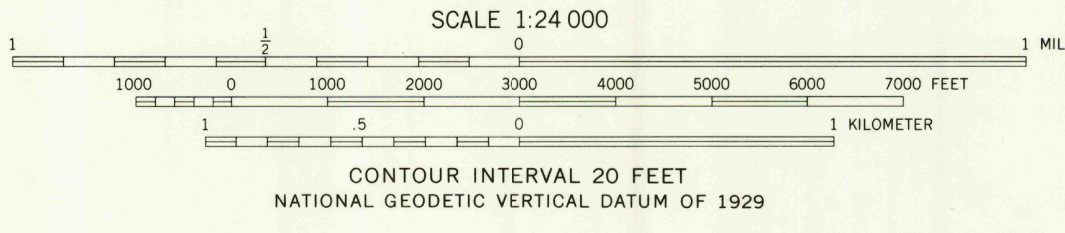
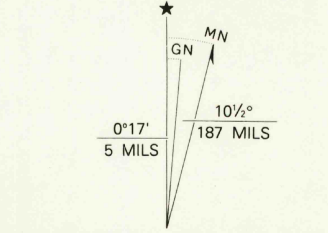


UNITED STATES
DEPARTMENT OF THE INTERIOR
GEOLOGICAL SURVEY

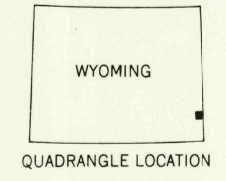
ROCKEAGLE QUADRANGLE
WYOMING-GOSHEN CO.
7.5 MINUTE SERIES (TOPOGRAPHIC)



Produced by the United States Geological Survey
as part of the Department of Interior program
for the development of the Missouri River Basin
Control by USGS and NOS/NOAA
Compiled from aerial photographs taken 1948
and by plane-table surveys 1950
1927 North American Datum (NAD 27). Projection and
10,000-foot ticks: Wyoming Coordinate System, east zone
(Transverse Mercator)
Blue 1000-meter Universal Transverse Mercator ticks, zone 13
North American Datum of 1983 (NAD 83) is shown by dashed
corner ticks. The values of the shift between NAD 27 and NAD 83
for 7.5-minute intersections are given in USGS Bulletin 1875
Photorevised from 1991 source; no major culture or drainage
changes observed. Boundaries and names verified 1993



THIS MAP COMPLIES WITH NATIONAL MAP ACCURACY STANDARDS
FOR SALE BY U.S. GEOLOGICAL SURVEY
DENVER, COLORADO 80225, OR RESTON, VIRGINIA 22092
A FOLDER DESCRIBING TOPOGRAPHIC MAPS AND SYMBOLS IS AVAILABLE ON REQUEST



ROAD CLASSIFICATION
Primary highway, hard surface
Secondary highway, hard surface
Light-duty road, hard or improved surface
Unimproved road
Interstate Route
U.S. Route
State Route

ROCKEAGLE, WYO.
42104-A5-TF-024
1950
MINOR REVISION 1993
DMA 5068 II SE-SERIES V874

