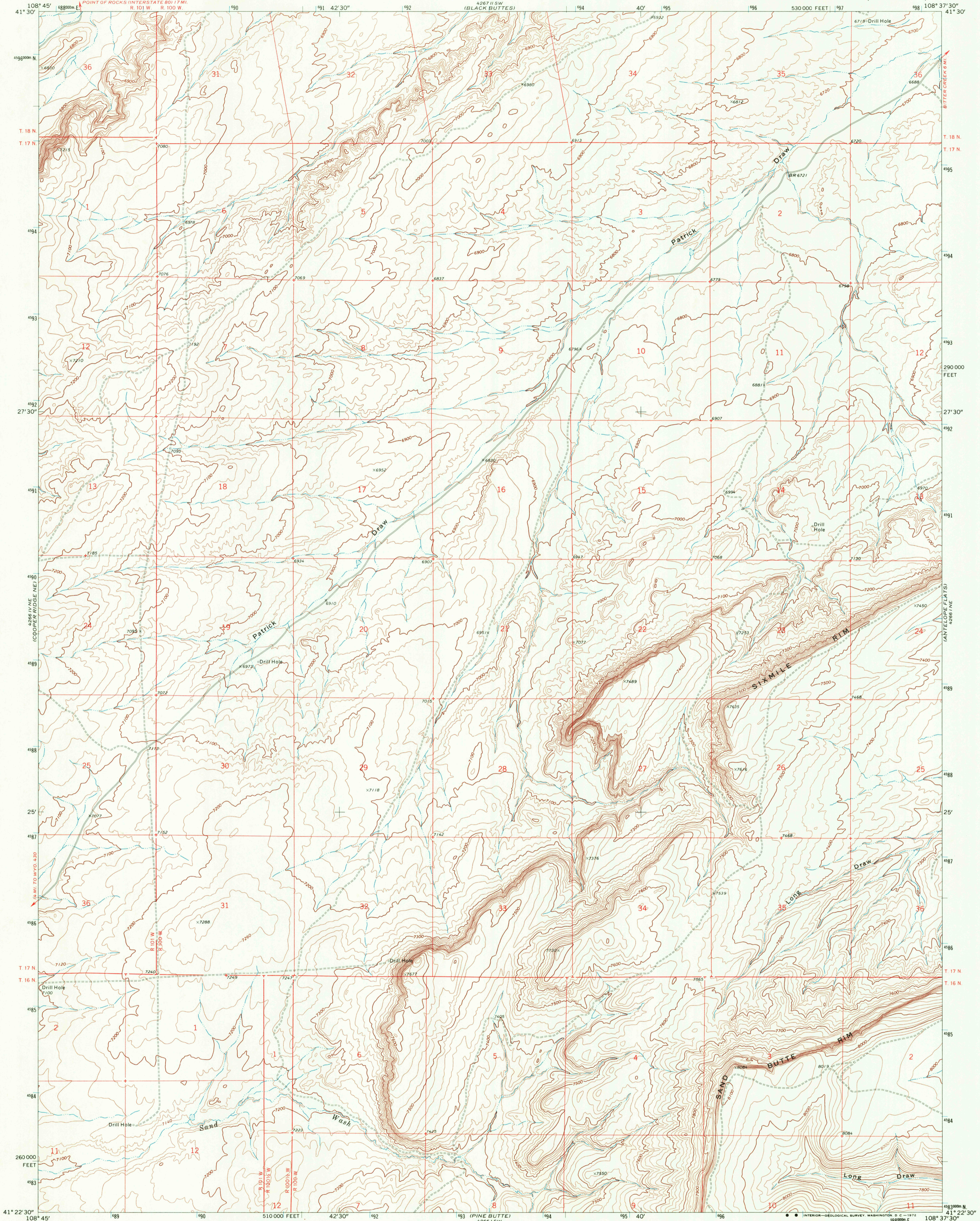
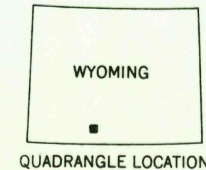
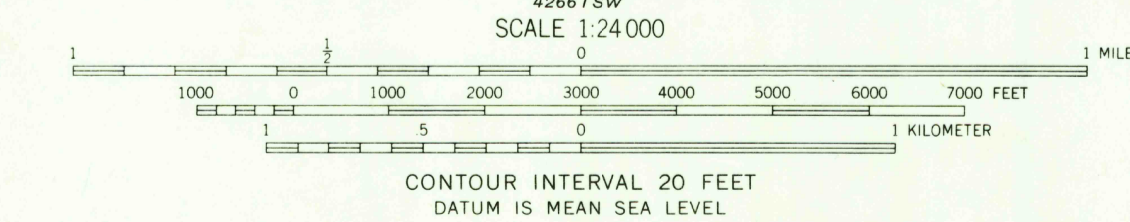
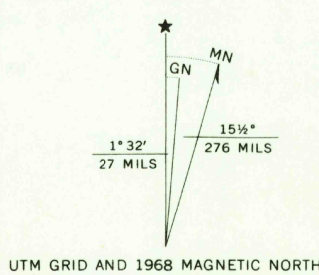


UNITED STATES
DEPARTMENT OF THE INTERIOR
GEOLOGICAL SURVEY

SAND BUTTE RIM NW QUADRANGLE
WYOMING—SWEETWATER CO.
7.5 MINUTE SERIES (TOPOGRAPHIC)



Mapped, edited, and published by the Geological Survey
Control by USGS and USC&GS
Topography by photogrammetric methods from aerial
photographs taken 1967. Field checked 1968
Polyconic projection. 1927 North American datum
10,000-foot grid based on Wyoming coordinate system,
west central zone
1000-meter Universal Transverse Mercator grid ticks,
zone 12, shown in blue



ROAD CLASSIFICATION
Light-duty road, all weather, improved surface
Unimproved road, fair or dry weather

SAND BUTTE RIM NW, WYO.
N4122.5-W10837.5/7.5

1968
AMS 4266 I NW—SERIES V874

RETURN TO:
USGS NHD HISTORICAL MAP ARCHIVES

50 plani
MAY 16 1972
2315

USGS
HISTORICAL FILE
TOPOGRAPHIC DIVISION