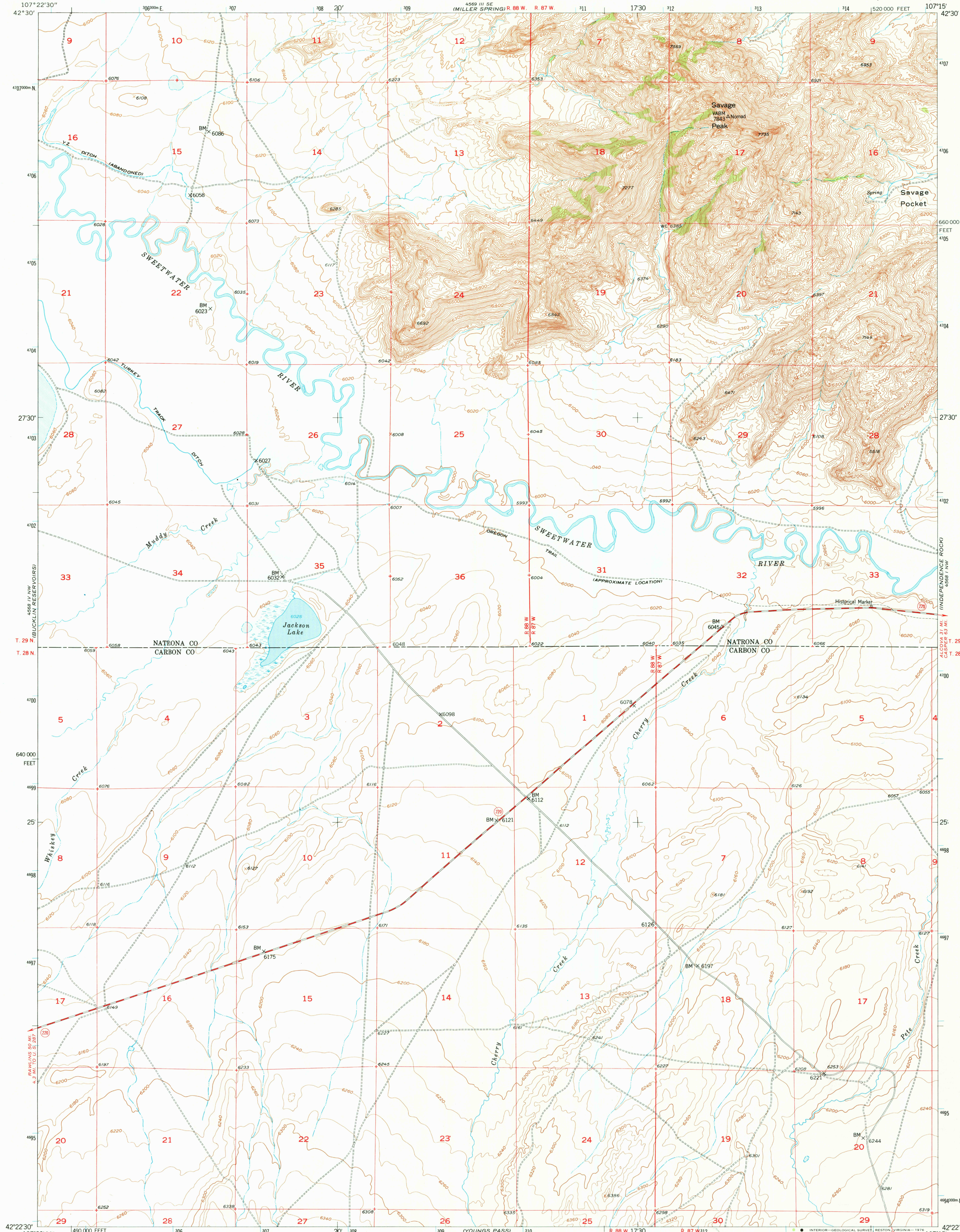
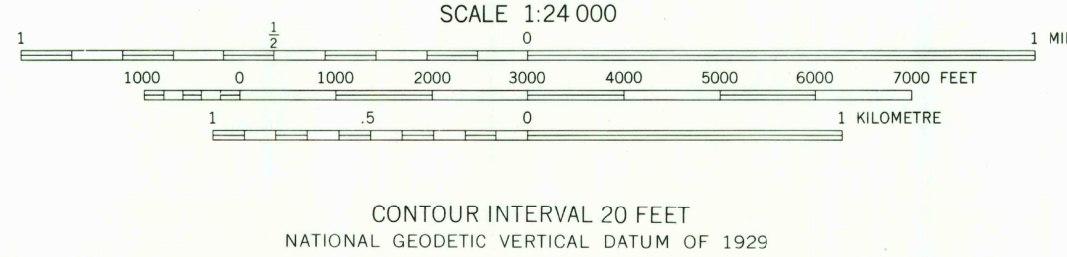
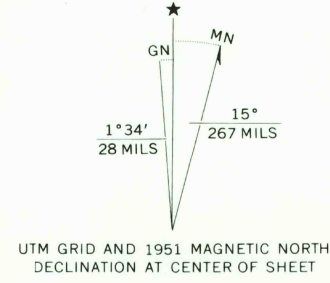


UNITED STATES
DEPARTMENT OF THE INTERIOR
GEOLOGICAL SURVEY

SAVAGE PEAK QUADRANGLE
WYOMING
7.5 MINUTE SERIES (TOPOGRAPHIC)



Mapped, edited, and published by the Geological Survey as part of the Department of the Interior program for the development of the Missouri River Basin. Control by USGS and USC&GS. Topography from aerial photographs by multiplex methods 1950 and plane-table surveys 1951. Aerial photographs taken 1947. Polyconic projection. 1927 North American datum. 10,000-foot grid based on Wyoming coordinate system, east central zone. 1000-metre Universal Transverse Mercator grid ticks, zone 13, shown in blue.



ROAD CLASSIFICATION
Heavy-duty ——— 4 LANE 16 LANE Light-duty ———
Medium-duty ——— 4 LANE 16 LANE Unimproved dirt ———
U.S. Route State Route

THIS MAP COMPLIES WITH NATIONAL MAP ACCURACY STANDARDS
FOR SALE BY U.S. GEOLOGICAL SURVEY, DENVER, COLORADO 80225, OR RESTON, VIRGINIA 22092
A FOLDER DESCRIBING TOPOGRAPHIC MAPS AND SYMBOLS IS AVAILABLE ON REQUEST

SAVAGE PEAK, WYO.
N4222.5-W10715/7.5
1951

USGS
Historical File
Topographic Division
AMS 4538 IV NE—SERIES V874

JUL 1 2 1976

RETURN TO:
USGS NHD HISTORICAL MAP ARCHIVES