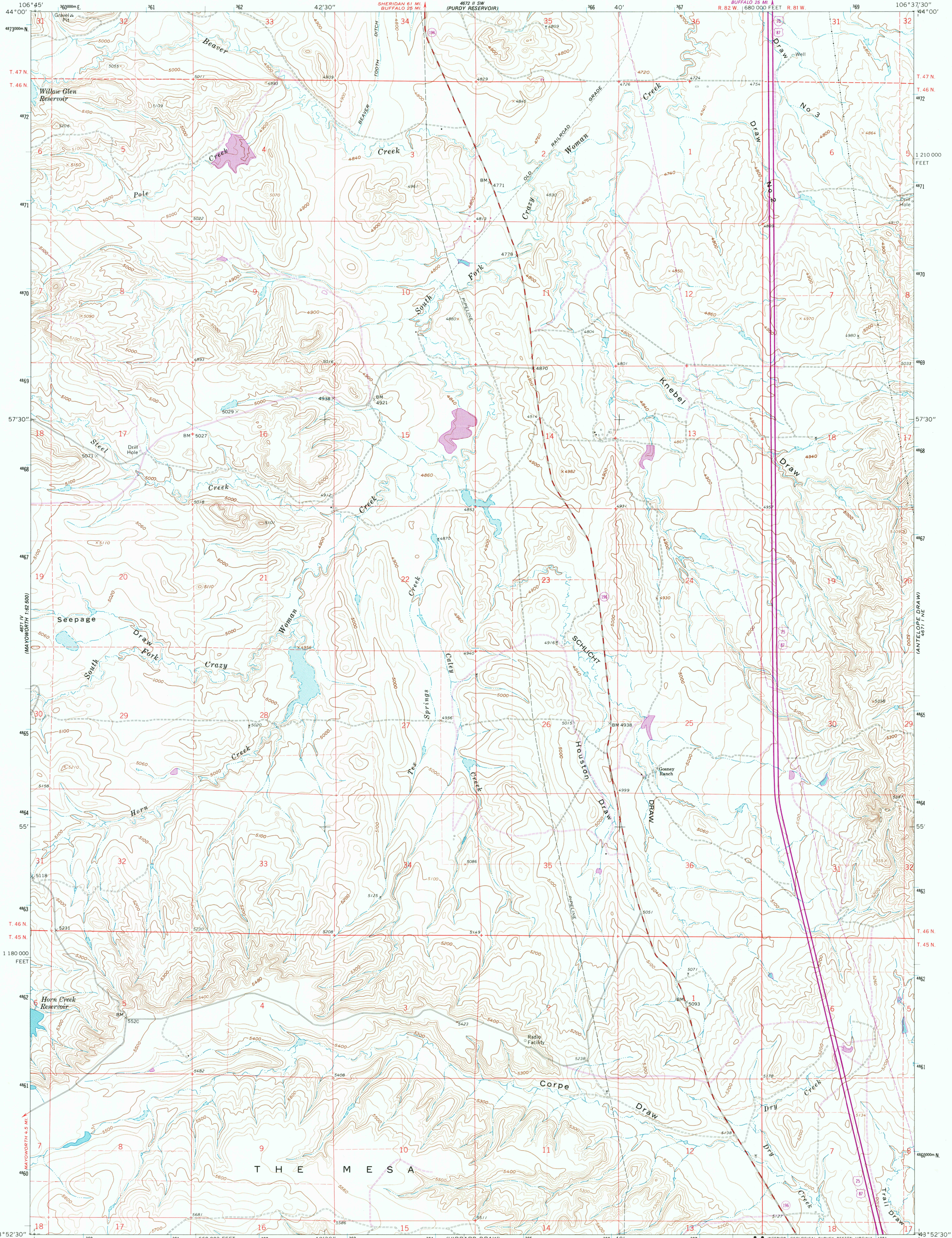


UNITED STATES  
DEPARTMENT OF THE INTERIOR  
GEOLOGICAL SURVEY

SCHLICHT DRAW QUADRANGLE  
WYOMING-JOHNSON CO.  
7.5 MINUTE SERIES (TOPOGRAPHIC)  
(FORMERLY SCHLICHT DRAW)



Mapped, edited, and published by the Geological Survey

Control by USGS and NOS/NOAA

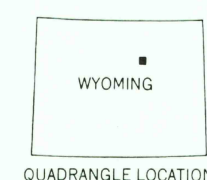
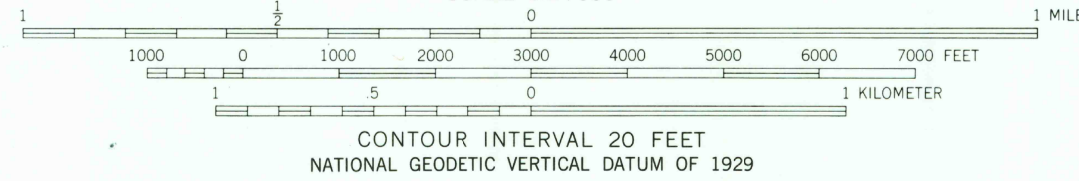
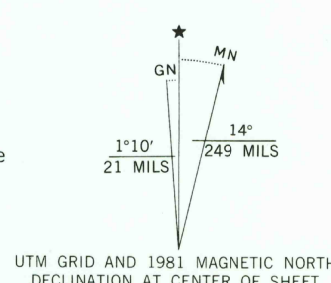
Topography by photogrammetric methods from aerial photographs taken 1956. Field checked 1961

Polyconic projection. 1927 North American datum. 10,000-foot grid based on Wyoming coordinate system, east central zone 1000-meter Universal Transverse Mercator grid ticks, zone 13, shown in blue

Fine red dashed lines indicate selected fence lines

To place on the predicted North American Datum 1983 move the projection lines 8 meters north and 50 meters east as shown by dashed corner ticks

Revisions shown in purple compiled from aerial photographs taken 1978 and other source data. This information not field checked. Map edited 1981



ROAD CLASSIFICATION	
Primary highway, hard surface	Light-duty road, hard or improved surface
Secondary highway, hard surface	Unimproved road
Interstate Route	U.S. Route
	State Route

SCHLICHT DRAW, WYO.  
(FORMERLY SCHLICHT DRAW)  
N4352.5-W10637.5/7.5

USGS  
HISTORICAL FILE  
NATIONAL MAPPING DIVISION

1961  
PHOTOREVISED 1981  
DMA 4671 I NW-SERIES V874

USGS AND HISTORICAL MAP ARCHIVES  
RETURN TO:

2000  
SEP 21 1981