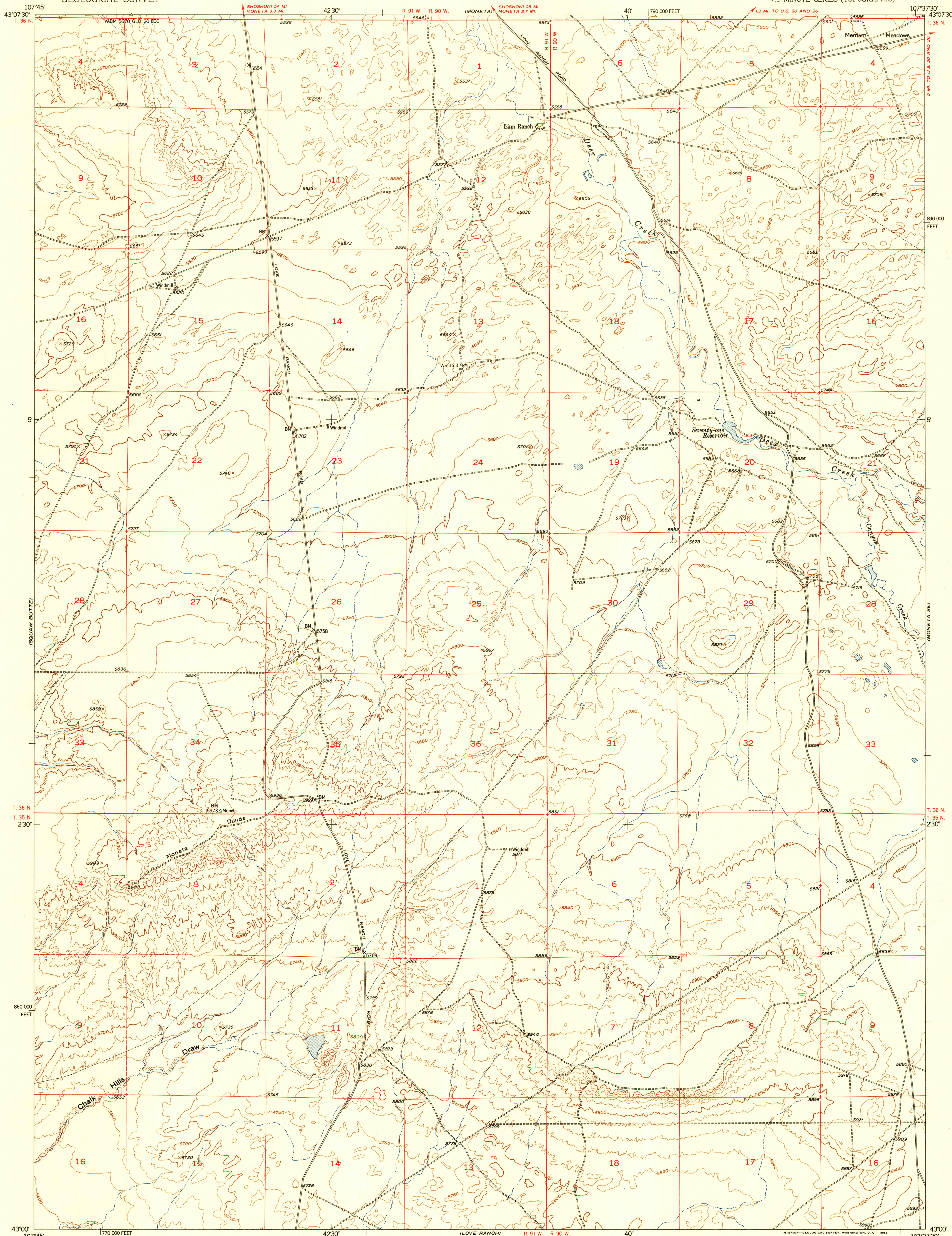


UNITED STATES
DEPARTMENT OF THE INTERIOR
GEOLOGICAL SURVEY

SEVENTY-ONE RESERVOIR QUADRANGLE
WYOMING-FREMONT CO.
7.5 MINUTE SERIES (TOPOGRAPHIC)



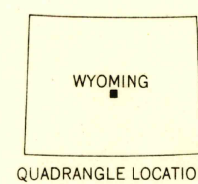
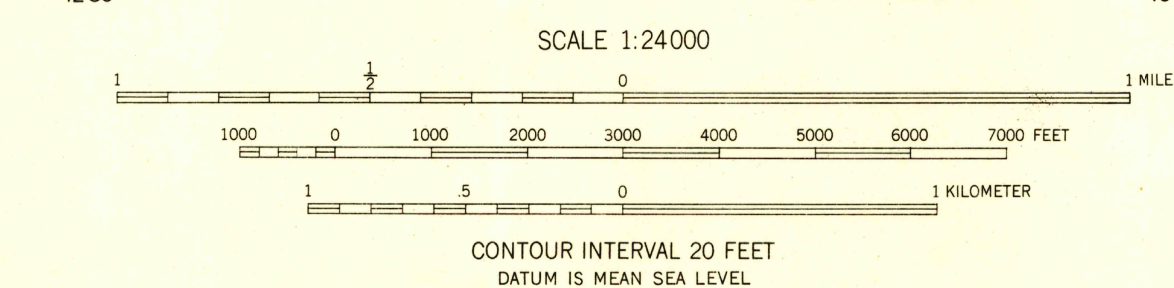
U.S.G.S.
FILE COPY
Inspection and Editing

RETURN TO:
USGS AND HISTORICAL MAP ARCHIVES

U.S.G.S.
FILE COPY
Inspection and Editing

Mapped, edited, and published by the Geological Survey
as part of the Department of the Interior program
for the development of the Missouri River Basin
Control by USGS and USC&GS
Topography from aerial photographs by multiplex methods
Aerial photographs taken 1949. Field check 1952
Polyconic projection. 1927 North American datum
10,000-foot grid based on Wyoming coordinate system,
west central zone
Dashed land lines indicate approximate locations

TRUE NORTH
MAGNETIC NORTH
APPROXIMATE MEAN
DECLINATION, 1952



ROAD CLASSIFICATION
Heavy-duty 4 LANE 6 LANE Light-duty
Medium-duty 4 LANE 6 LANE Unimproved dirt
U.S. Route State Route

SEVENTY-ONE RESERVOIR, WYO.
N4300-W10737.5/7.5

1952

THIS MAP COMPLIES WITH NATIONAL MAP ACCURACY STANDARDS
FOR SALE BY U.S. GEOLOGICAL SURVEY, FEDERAL CENTER, DENVER, COLORADO OR WASHINGTON 25, D.C.
A FOLDER DESCRIBING TOPOGRAPHIC MAPS AND SYMBOLS IS AVAILABLE ON REQUEST

JAN 6 1954