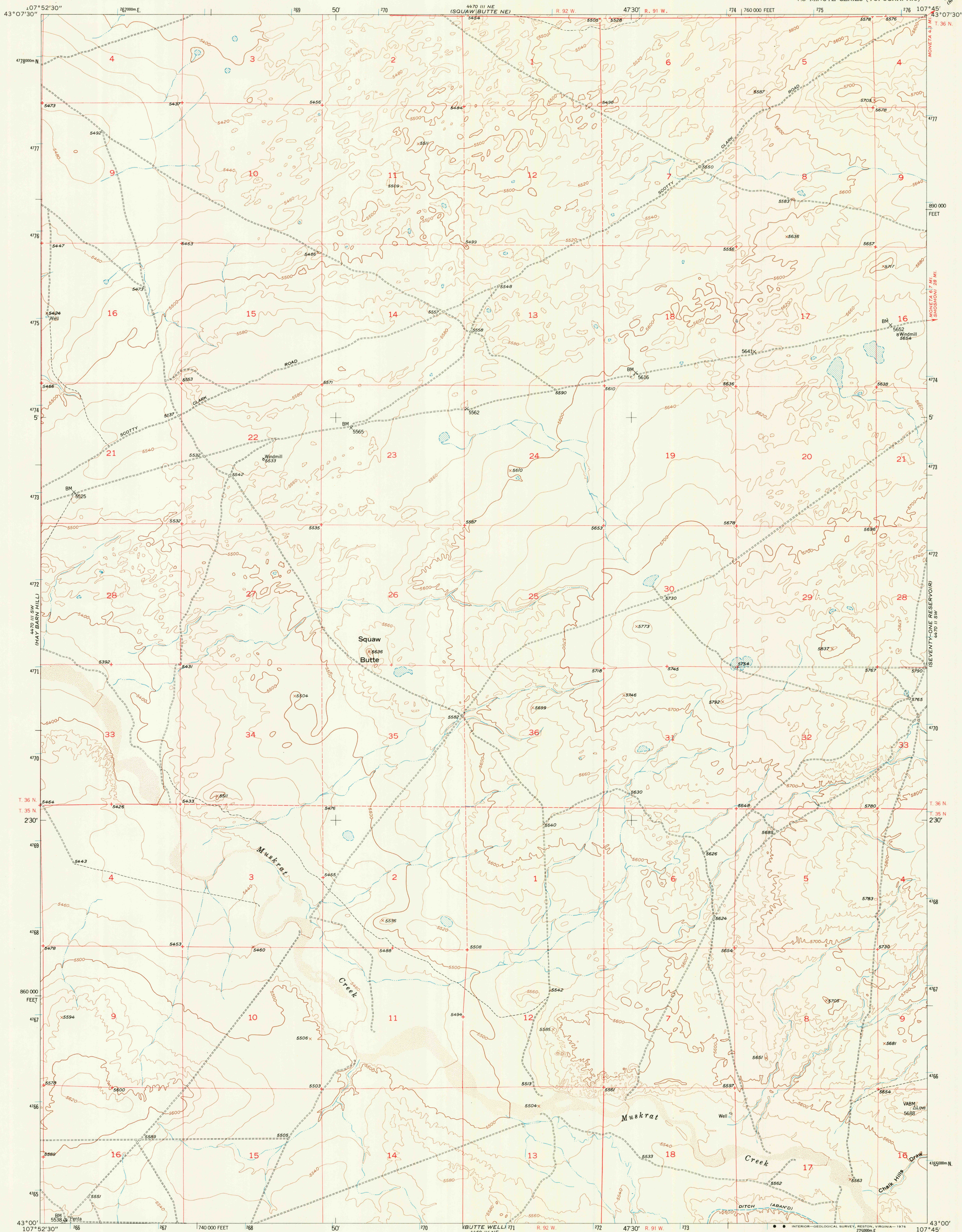


UNITED STATES  
DEPARTMENT OF THE INTERIOR  
GEOLOGICAL SURVEY

SQUAW BUTTE QUADRANGLE  
WYOMING-FREMONT CO.  
7.5 MINUTE SERIES (TOPOGRAPHIC)



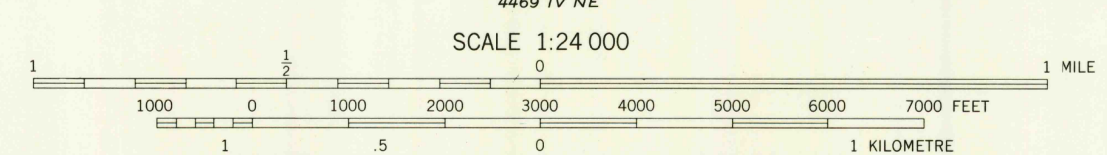
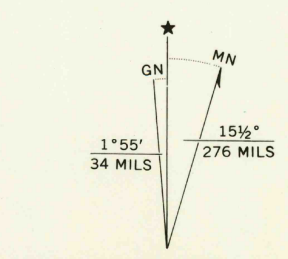
Maped, edited, and published by the Geological Survey  
as part of the Department of the Interior program  
for the development of the Missouri River Basin  
Control by USGS and USC&GS

Topography from aerial photographs by multiplex methods  
and by plane-table surveys 1952. Aerial photographs taken 1949

Polyconic projection. 1927 North American datum  
10,000-foot grid based on Wyoming coordinate system,  
west central zone

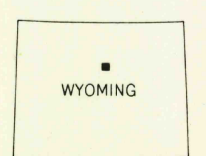
1000-metre Universal Transverse Mercator grid ticks,  
zone 13, shown in blue

Dashed land lines indicate approximate locations



CONTOUR INTERVAL 20 FEET  
NATIONAL GEODETIC VERTICAL DATUM OF 1929

THIS MAP COMPLIES WITH NATIONAL MAP ACCURACY STANDARDS  
FOR SALE BY U.S. GEOLOGICAL SURVEY, DENVER, COLORADO 80225, OR RESTON, VIRGINIA 22092  
A FOLDER DESCRIBING TOPOGRAPHIC MAPS AND SYMBOLS IS AVAILABLE ON REQUEST



ROAD CLASSIFICATION  
Heavy-duty 4 LANE 16 LANE Light-duty  
Medium-duty 4 LANE 6 LANE Unimproved dirt  
U. S. Route State Route

USGS  
Historical File  
Topographic Division

SQUAW BUTTE, WYO.  
N4300-W10745/7.5

1952  
AMS 4470 III SE-SERIES V874

AUG 1 1 1976

RETURN TO:  
USGS AND HISTORICAL MAP ARCHIVES