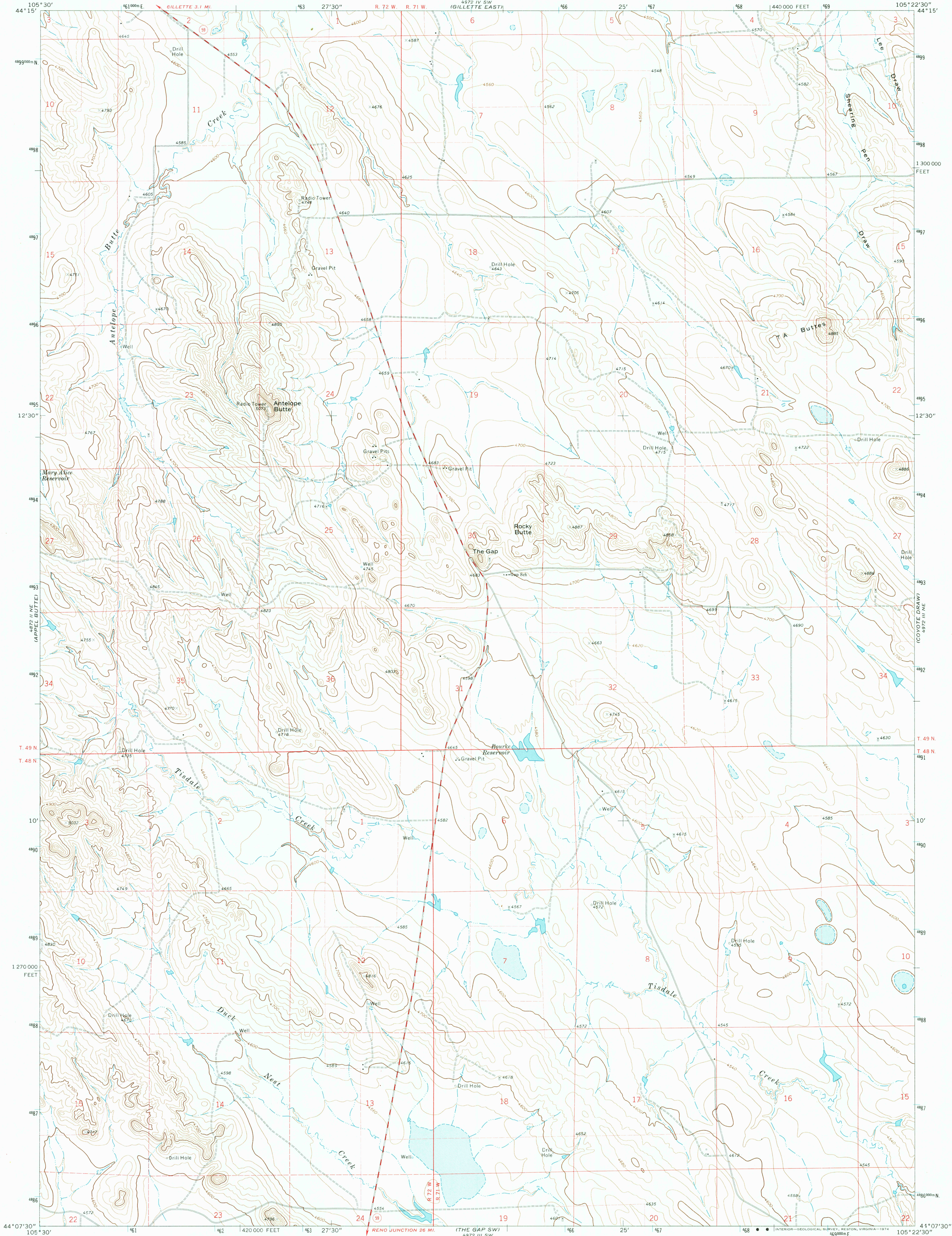


UNITED STATES  
DEPARTMENT OF THE INTERIOR  
GEOLOGICAL SURVEY

THE GAP QUADRANGLE  
WYOMING—CAMPBELL CO.  
7.5 MINUTE SERIES (TOPOGRAPHIC)



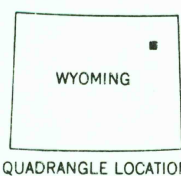
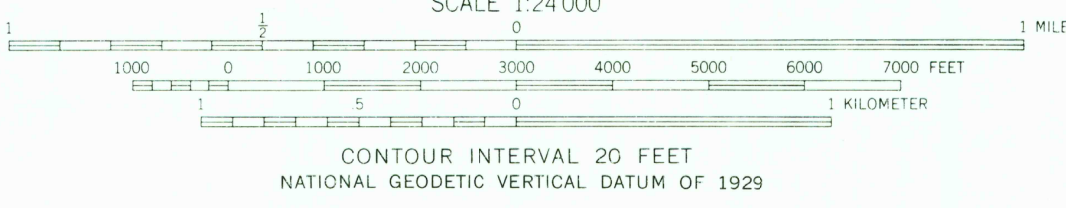
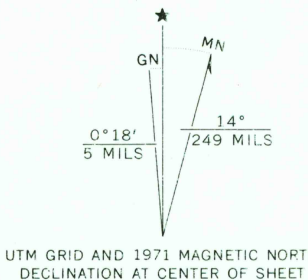
Mapped, edited, and published by the Geological Survey

Control by USGS and USC&GS

Topography by photogrammetric methods from aerial  
photographs taken 1970. Field checked 1971

Projection and 10,000-foot grid ticks: Wyoming  
coordinate system, east zone (transverse Mercator)  
1000-meter Universal Transverse Mercator grid ticks,  
zone 13, shown in blue. 1927 North American datum

Fine red dashed lines indicate selected fence lines



| ROAD CLASSIFICATION                |  |
|------------------------------------|--|
| Primary highway,<br>hard surface   | Light-duty road, hard or<br>improved surface |
| Secondary highway,<br>hard surface | Unimproved road                              |
| Interstate Route                   | U. S. Route                                  |
|                                    | State Route                                  |

THE GAP, WYO.  
N4407.5—W10522.5/7.5

1971

AMS 4972 III NW—SERIES V874

THIS MAP COMPLIES WITH NATIONAL MAP ACCURACY STANDARDS  
FOR SALE BY U.S. GEOLOGICAL SURVEY, DENVER, COLORADO 80225, OR RESTON, VIRGINIA 22092  
A FOLDER DESCRIBING TOPOGRAPHIC MAPS AND SYMBOLS IS AVAILABLE ON REQUEST

RETURN TO:  
USGS AND HISTORICAL MAP ARCHIVES