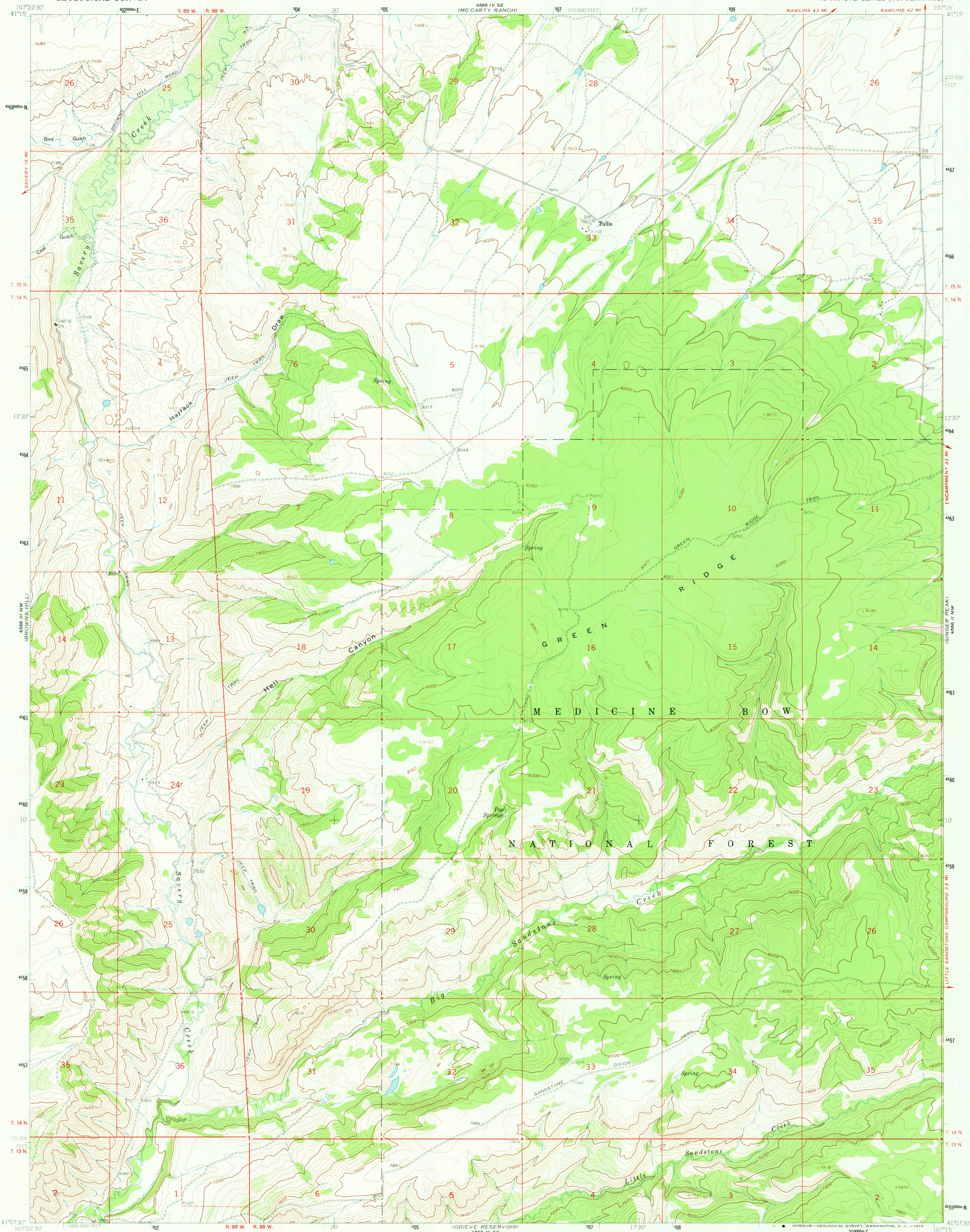


UNITED STATES
DEPARTMENT OF THE INTERIOR
GEOLOGICAL SURVEY

TULLIS QUADRANGLE
WYOMING-CARBON CO.
7.5 MINUTE SERIES (TOPOGRAPHIC)



Mapped, edited, and published by the Geological Survey as part of the Department of the Interior program for the development of the Missouri River Basin.

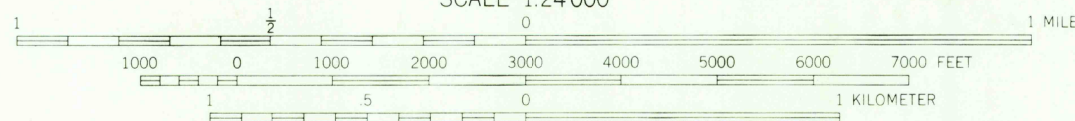
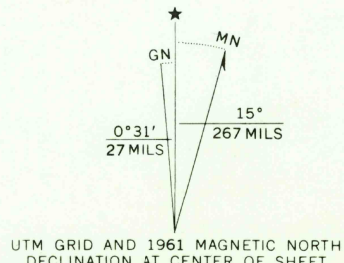
Control by USGS and USC&GS

Topography by photogrammetric methods from aerial photographs taken 1957. Field checked 1961.

Polyconic projection. 1927 North American datum. 10,000-foot grid based on Wyoming coordinate system, east central zone.

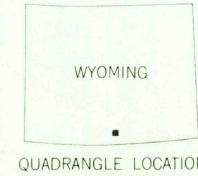
1000-meter Universal Transverse Mercator grid ticks, zone 13, shown in blue.

Fine red dashed lines indicate selected fence lines.



CONTOUR INTERVAL 40 FEET
DOTTED LINES REPRESENT 20 FOOT CONTOURS
DATUM IS MEAN SEA LEVEL

THIS MAP COMPLIES WITH NATIONAL MAP ACCURACY STANDARDS
FOR SALE BY U. S. GEOLOGICAL SURVEY, DENVER, COLORADO 80225, OR WASHINGTON, D. C. 20242
A FOLDER DESCRIBING TOPOGRAPHIC MAPS AND SYMBOLS IS AVAILABLE ON REQUEST



ROAD CLASSIFICATION
Light duty ————— Unimproved dirt =

USGS
Historical File
Topographic Division

TULLIS, WYO.
N41075-W10715/7.5

1961 JUN 5 1973

AMS 4566 III NE-SERIES V874

RETURN TO:
USGS AND HISTORICAL MAP ARCHIVES

2430