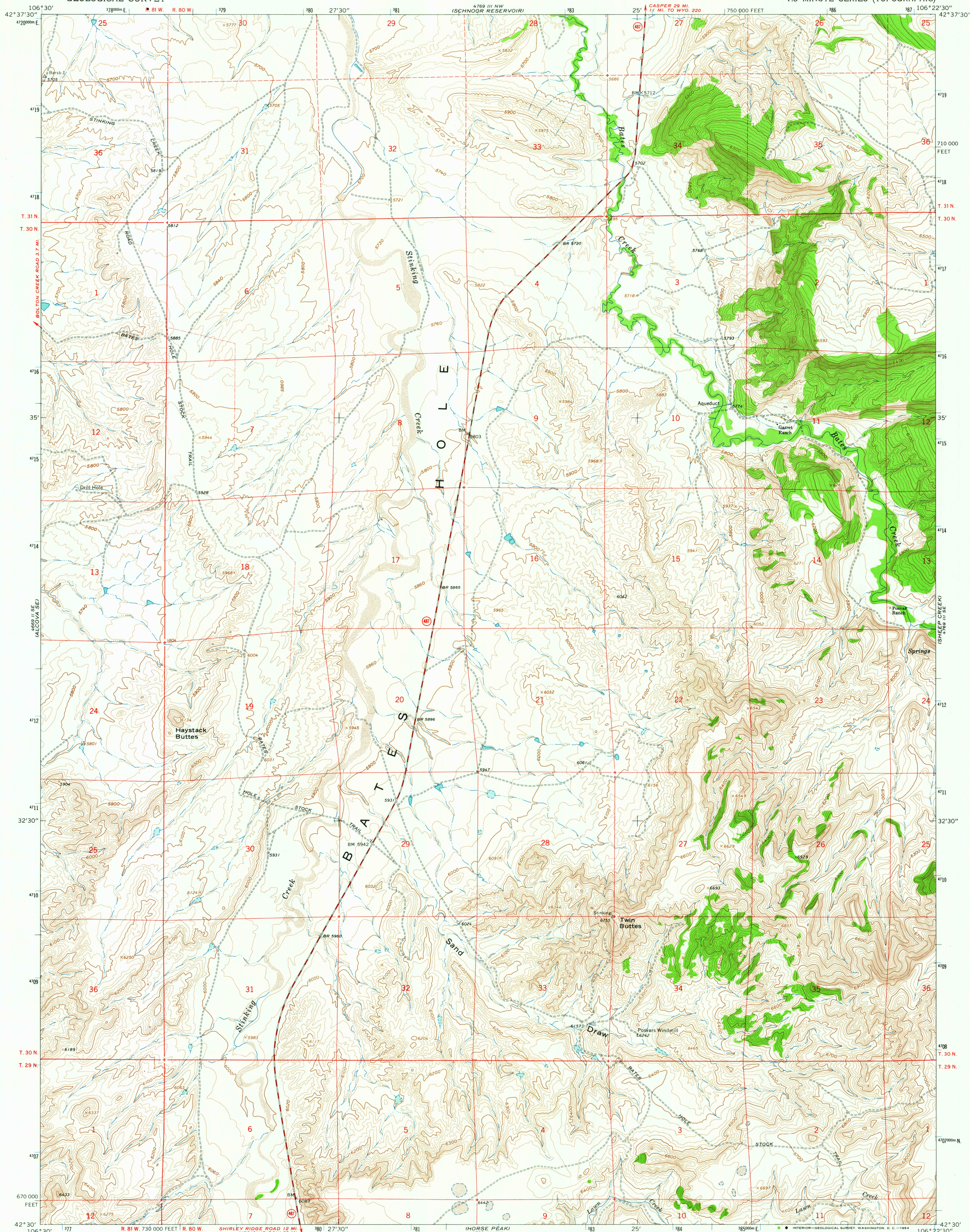


UNITED STATES
DEPARTMENT OF THE INTERIOR
GEOLOGICAL SURVEY

TWIN BUTTES QUADRANGLE
WYOMING-NATRONA CO.
7.5 MINUTE SERIES (TOPOGRAPHIC)



Mapped, edited, and published by the Geological Survey

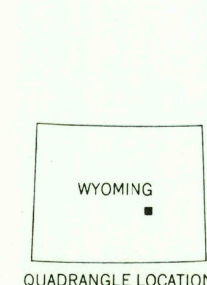
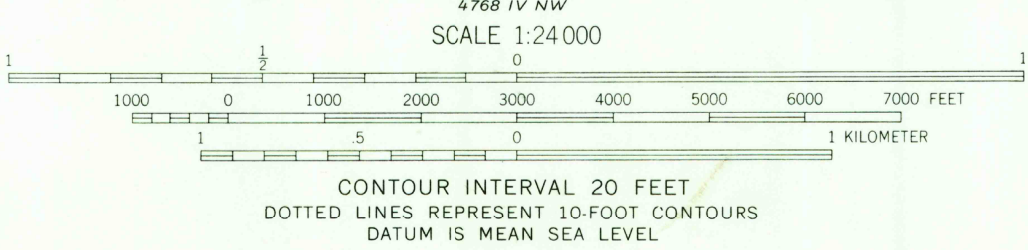
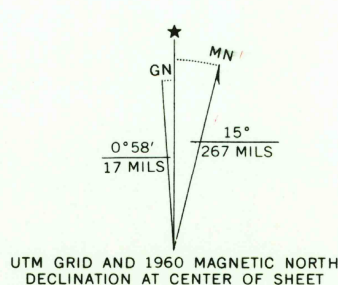
Control by USGS and USC&GS

Topography by photogrammetric methods from aerial photographs taken 1959. Field checked 1963

Polyconic projection. 1927 North American datum 10,000-foot grid based on Wyoming coordinate system east central zone

1000-meter Universal Transverse Mercator grid ticks, zone 13, shown in blue

Fine red dashed lines indicate selected fence lines



ROAD CLASSIFICATION
Medium-duty ——— Unimproved dirt ———
State Route

TWIN BUTTES, WYO.
N4230—W10622.5/7.5

1960

AMS 4769 III SW—SERIES V874

THIS MAP COMPLIES WITH NATIONAL MAP ACCURACY STANDARDS
FOR SALE BY U. S. GEOLOGICAL SURVEY, DENVER 25, COLORADO OR WASHINGTON 25, D. C.
A FOLDER DESCRIBING TOPOGRAPHIC MAPS AND SYMBOLS IS AVAILABLE ON REQUEST

RETURN TO:
USGS AND HISTORICAL MAP ARCHIVES

JUL 17 1964

2210

U.S.G.S.
FILE COPY
TOPOGRAPHIC DIVISION