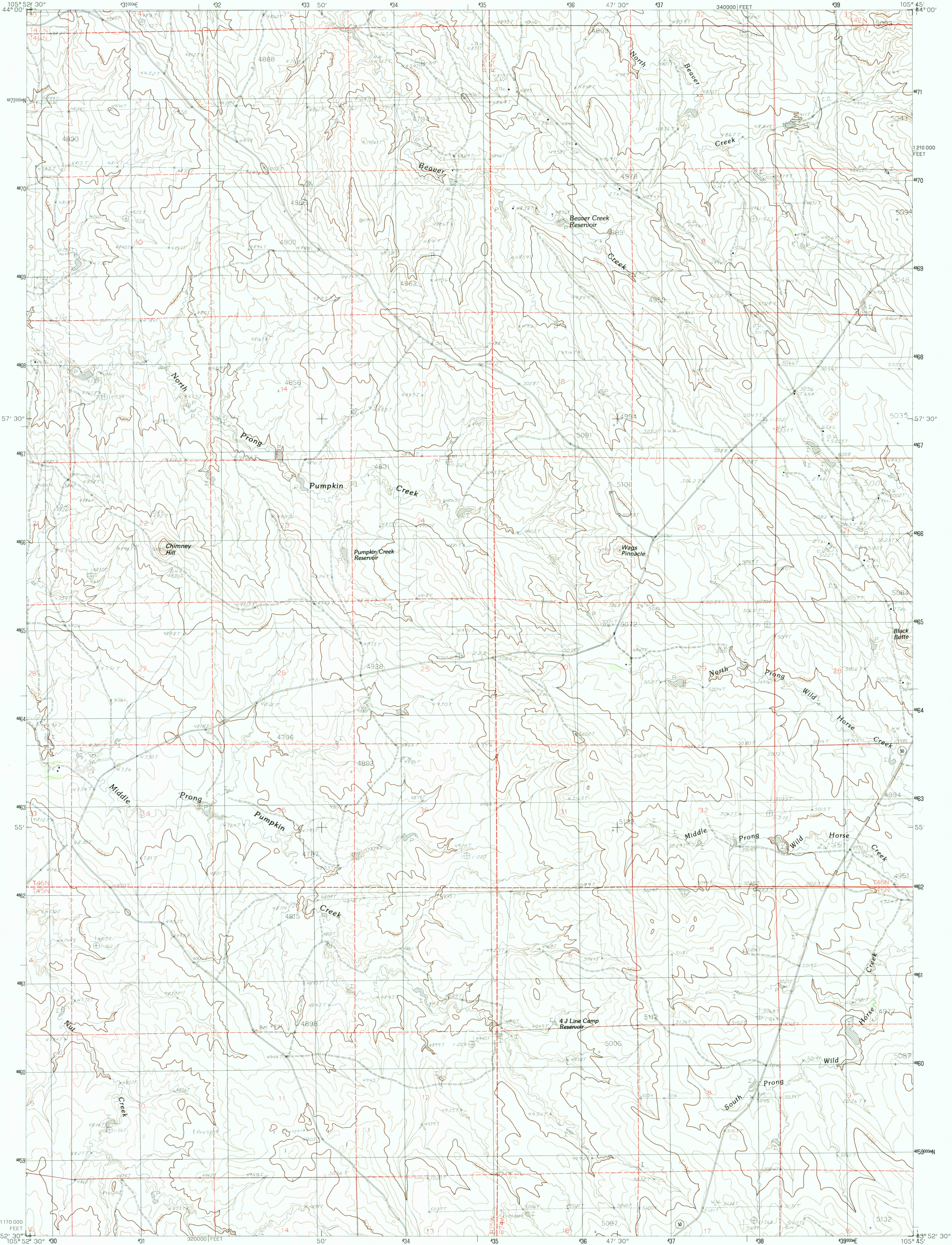


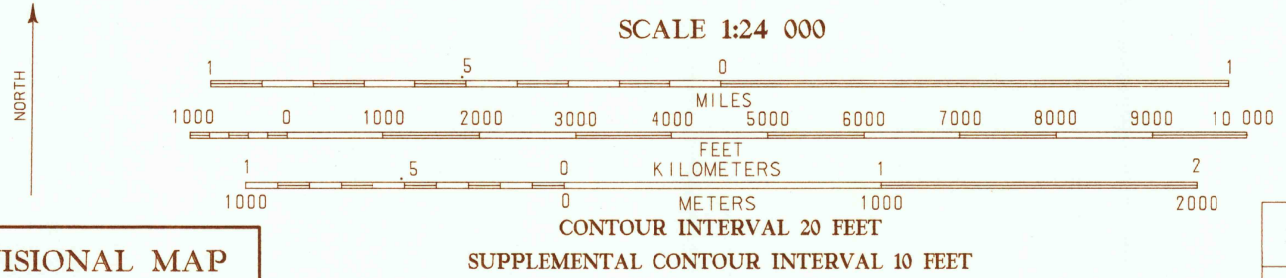
UNITED STATES
DEPARTMENT OF THE INTERIOR
GEOLOGICAL SURVEY

WAGS PINNACLE QUADRANGLE
WYOMING-CAMPBELL CO.
7.5 MINUTE SERIES (TOPOGRAPHIC)

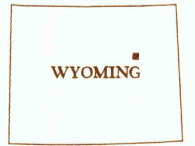


PRODUCED BY THE UNITED STATES GEOLOGICAL SURVEY
CONTROL BY USGS, NOS/NOAA
COMPILED FROM AERIAL PHOTOGRAPHS TAKEN 1975
FIELD CHECKED 1978
PROJECTION TRANSVERSE MERCATOR
GRID: 100-METER UNIVERSAL TRANSVERSE MERCATOR ZONE 13
1000-FOOT STATE GRID TICS WYOMING EAST ZONE
UTM GRID DECLINATION 0°34' WEST
1984 MAGNETIC NORTH DECLINATION 1°3' EAST
VERTICAL DATUM NATIONAL GEODETIC VERTICAL DATUM OF 1959
HORIZONTAL DATUM 1927 NORTH AMERICAN DATUM
To place on the predicted North American Datum of 1983,
move the projection lines as shown by dashed corner ticks
(7 meters north and 48 meters east)
There may be private inholdings within the boundaries of any
Federal and State Reservations shown on this map
All marginal data and lettering generated and positioned by
automated type placement procedures

PROVISIONAL MAP
Produced from original
manuscript drawings. Infor-
mation shown as of date of
field check. 3



THIS MAP COMPLIES WITH NATIONAL MAP ACCURACY STANDARDS
FOR SALE BY U.S. GEOLOGICAL SURVEY, DENVER, COLORADO 80225
OR RESTON, VIRGINIA 22092



QUADRANGLE LOCATION			
1	2	3	1. Bogie Draw
4	5	6	2. Double Tanks
7	8	9	3. Pleasantdale
			4. Flat Draw
			5. Pomeroy Draw
			6. North House
			7. Saverton
			8. Greenwood Reservoir

ROAD LEGEND
Improved Road
Unimproved Road
Trail
Interstate Route U.S. Route State Route

WAGS PINNACLE, WYOMING
PROVISIONAL EDITION 1984

43105-H7-TF-024

RETURN TO:
USGS AND HISTORICAL MAP ARCHIVES