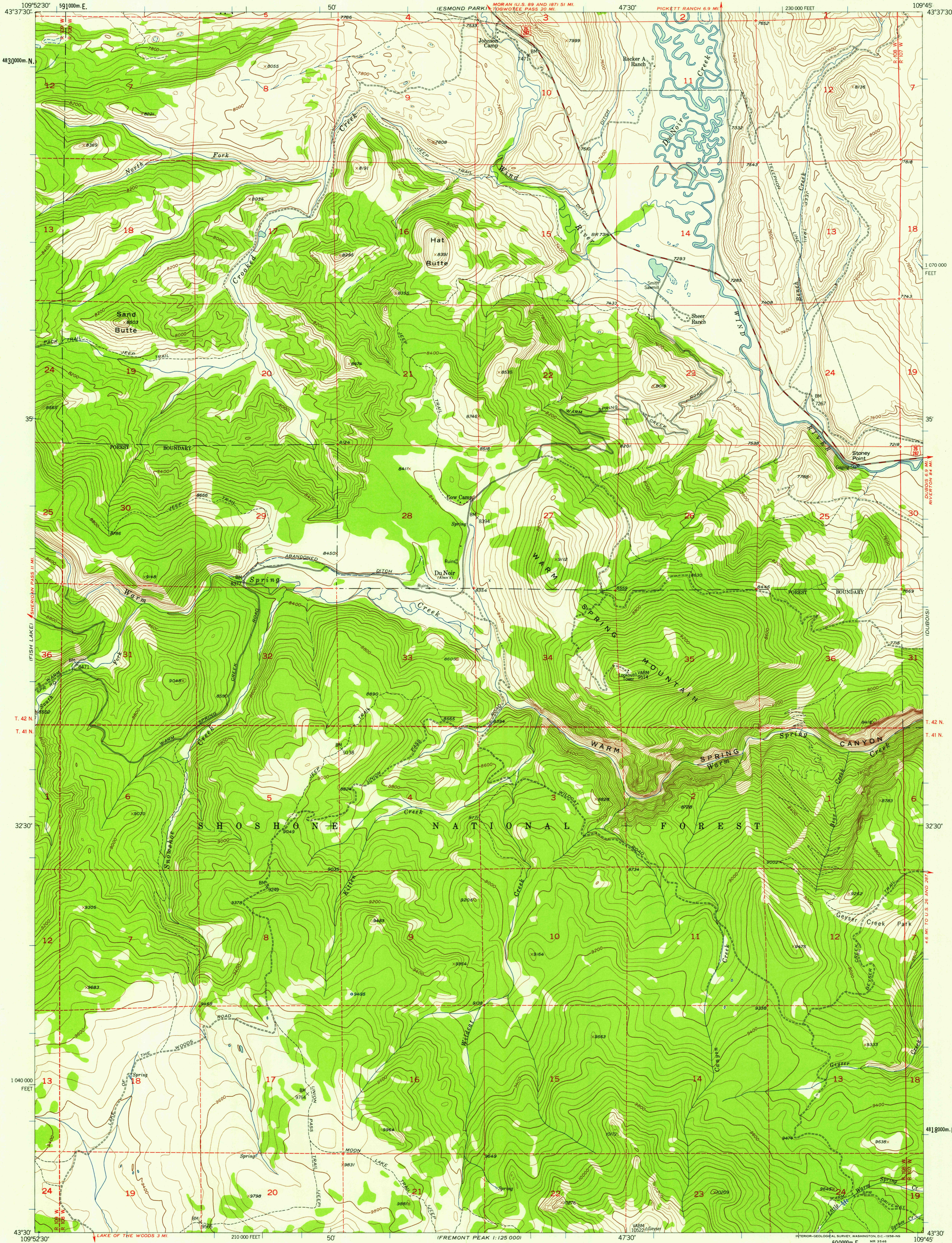


UNITED STATES
DEPARTMENT OF THE INTERIOR
GEOLOGICAL SURVEY

WARM SPRING MOUNTAIN QUADRANGLE
WYOMING-FREMONT CO.
7.5 MINUTE SERIES (TOPOGRAPHIC)



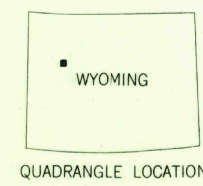
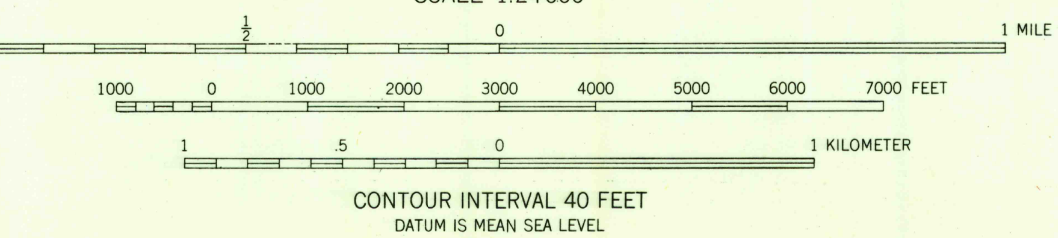
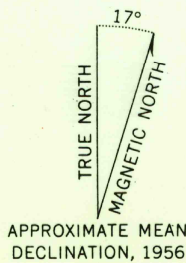
Mapped, edited, and published by the Geological Survey as part of the Department of the Interior program for the development of the Missouri River Basin.

Control by USGS and USC&GS

Topography from aerial photographs by multiplex methods. Aerial photographs taken 1953. Field check 1956.

Polyconic projection. 1927 North American datum. 10,000-foot grid based on Wyoming coordinate system, west central zone. 1000-meter Universal Transverse Mercator grid ticks, zone 12, shown in blue.

Dashed land lines indicate approximate locations.



ROAD CLASSIFICATION

Medium-duty ——— Light-duty ———

Unimproved dirt ———

U.S. Route

WARM SPRING MOUNTAIN, WYO.
N4330-W10945/7.5

1956

THIS MAP COMPLIES WITH NATIONAL MAP ACCURACY STANDARDS
FOR SALE BY U.S. GEOLOGICAL SURVEY, DENVER 2, COLORADO OR WASHINGTON 25, D.C.
A FOLDER DESCRIBING TOPOGRAPHIC MAPS AND SYMBOLS IS AVAILABLE ON REQUEST

RETURN TO:
USGS AND HISTORICAL MAP ARCHIVES

U.S.G.S.
FILE COPY
TOPOGRAPHIC DIVISION

AUG 20 1958

1890