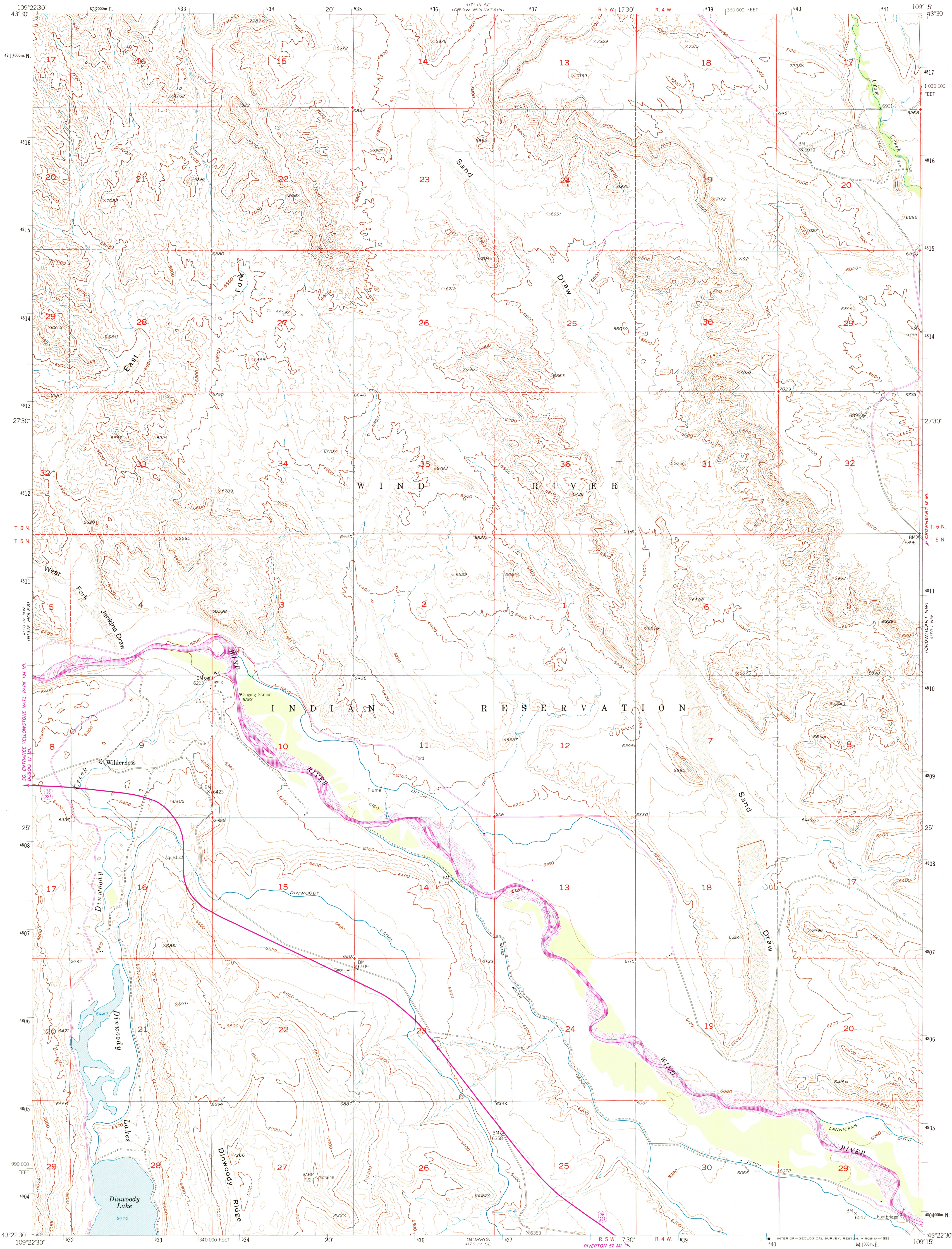
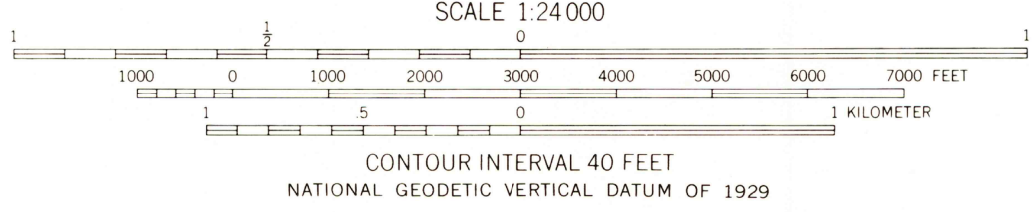
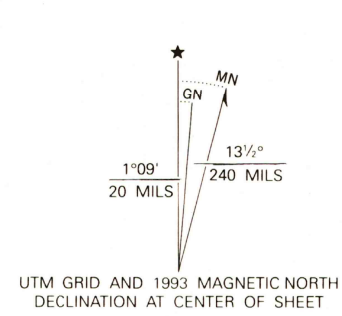


UNITED STATES
DEPARTMENT OF THE INTERIOR
GEOLOGICAL SURVEY

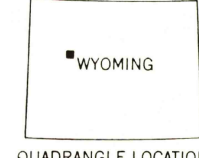
WILDERNESS QUADRANGLE
WYOMING-FREMONT CO.
7.5 MINUTE SERIES (TOPOGRAPHIC)



Produced by the United States Geological Survey as part of the Department of the Interior program for the development of the Missouri River Basin. Control by USGS and NOS/NOAA. Compiled from aerial photographs taken 1949. Field checked 1952. 1927 North American Datum (NAD 27). Projection and 10000-foot ticks: Wyoming Coordinate System, west central zone (Transverse Mercator). Blue 1000-meter Universal Transverse Mercator ticks, zone 12. North American Datum of 1983 (NAD 83) is shown by dashed corner ticks. The values of the shift between NAD 27 and NAD 83 for 7.5-minute intersections are given in USGS Bulletin 1875. There may be private inholdings within the boundaries of the National or State reservations shown on this map. Photospected from 1991 source; no major culture or drainage changes observed. Names verified 1993.



THIS MAP COMPLIES WITH NATIONAL MAP ACCURACY STANDARDS FOR SALE BY U.S. GEOLOGICAL SURVEY, DENVER, COLORADO 80225, OR RESTON, VIRGINIA 22092. A FOLDER DESCRIBING TOPOGRAPHIC MAPS AND SYMBOLS IS AVAILABLE ON REQUEST.



ROAD CLASSIFICATION
Primary highway, hard surface
Secondary highway, hard surface
Interstate Route
Light-duty road, hard or improved surface
Unimproved road
U. S. Route
State Route

WILDERNESS, WYO.
43109-D3-TF-024
1952
PHOTOREVISED 1978
MINOR REVISION 1993
DMA 4170 IV NE-SERIES V874

