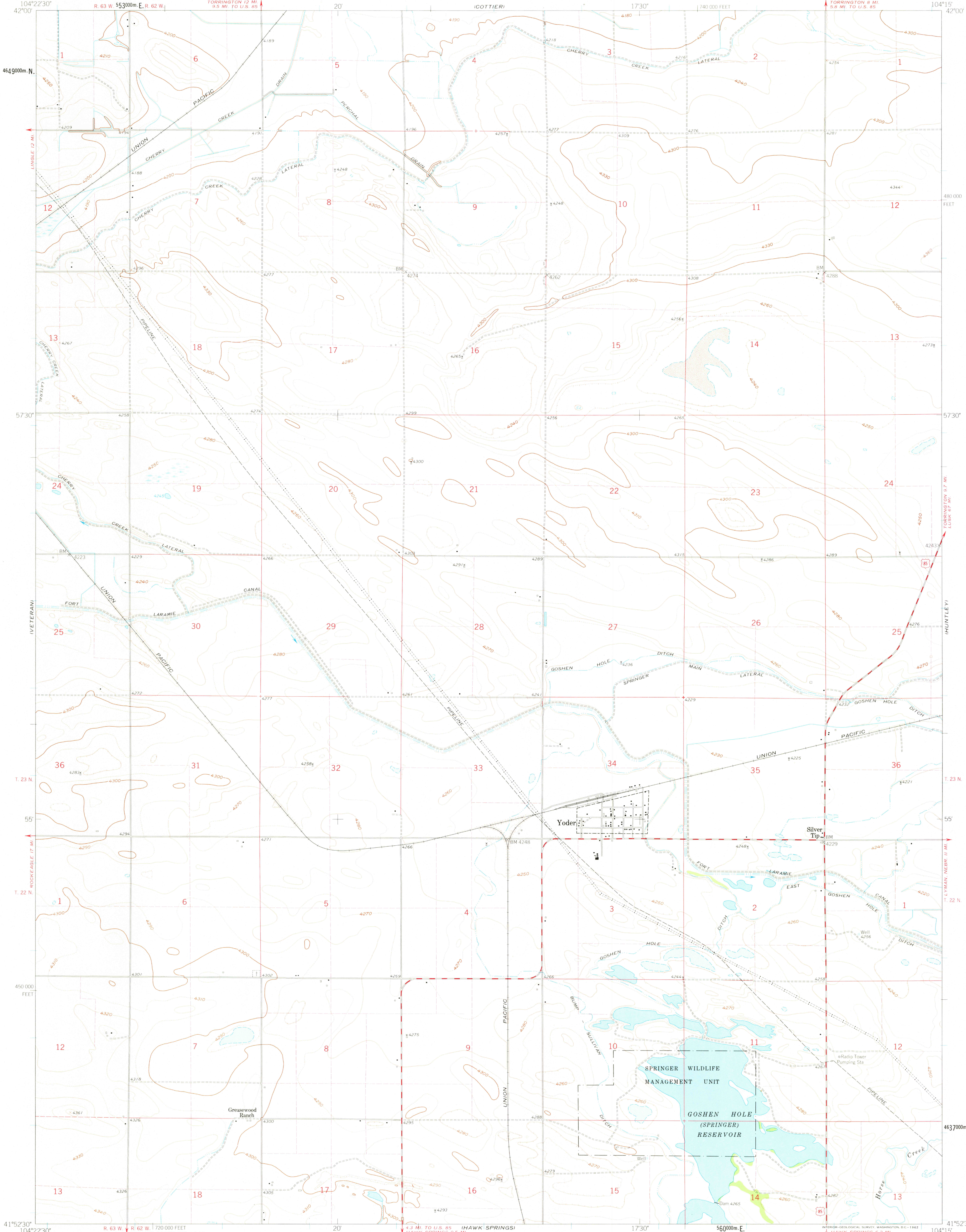


UNITED STATES
DEPARTMENT OF THE INTERIOR
GEOLOGICAL SURVEY

YODER QUADRANGLE
WYOMING-GOSHEN CO.
7.5 MINUTE SERIES (TOPOGRAPHIC)

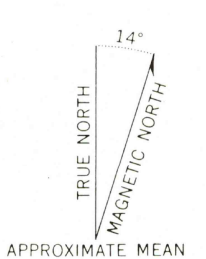


Mapped, edited, and published by the Geological Survey as part of the Department of the Interior program for the development of the Missouri River Basin Control by USGS and USC&GS

Topography by photogrammetric methods from aerial photographs taken 1957 and planetable surveys 1960

Polyconic projection. 1927 North American datum 10,000-foot grid based on Wyoming coordinate system, east zone 1000 meter Universal Transverse Mercator grid ticks, zone 13, shown in blue

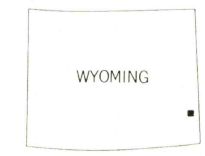
Fine red dashed lines indicate selected fence and field lines where generally visible on aerial photographs. This information is unchecked



SCALE 1:24,000

CONTOUR INTERVAL 20 FEET
DOTTED LINES REPRESENT 10 FOOT CONTOURS
DATUM IS MEAN SEA LEVEL

FOR SALE BY U.S. GEOLOGICAL SURVEY, DENVER 25, COLORADO OR WASHINGTON 25, D.C.
A FOLDER DESCRIBING TOPOGRAPHIC MAPS AND SYMBOLS IS AVAILABLE ON REQUEST



ROAD CLASSIFICATION

Heavy-duty ——— Light-duty ———

Unimproved dirt ———

U.S. Route

YODER, WYO.
N4152 5-W10415/7.5

1960

USGS
Historical File
Topographic Division

JUN 2 1 1977
1700

RETURN TO:
USGS NHD HISTORICAL MAP ARCHIVES