

CASPER, WYOMING

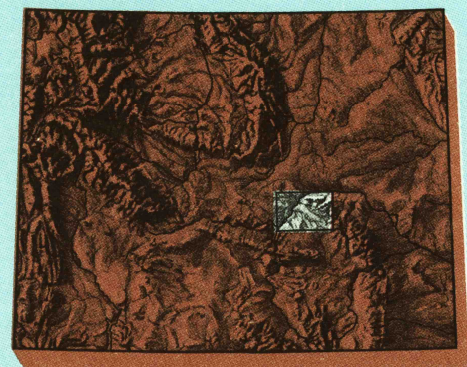
30X60 MINUTE SERIES (TOPOGRAPHIC)

APR 20 1980

1:100 000-scale metric
topographic map of

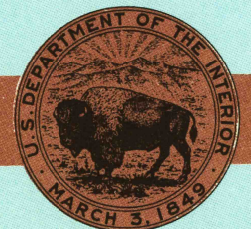
Casper
WYOMING

USGS
Historical File
Topographic Division



30 X 60 MINUTE QUADRANGLE
SHOWING

- Contours and elevations in meters
- Highways, roads and other manmade structures
- Water features
- Woodland areas
- Geographic names



GEOLOGICAL SURVEY

1979

Produced by the United States Geological Survey
in cooperation with the Bureau of Land Management

Compiled from USGS 1:24 000-scale topographic maps
dated 1949-1961. Partially revised from aerial photographs
taken 1976 and other source data. Revised information
not field checked. Map edited 1979.

Projection and 10 000-meter grid, zone 13:
Universal Transverse Mercator
25 000-foot grid ticks based on Wyoming coordinate
system, east central and east zones. 1927 North American datum
To place on the predicted North American Datum 1983
move the projection lines 8 meters north and 52 meters east
There may be private inholdings within the boundaries of
the National or State reservations shown on this map

CONTOUR INTERVAL 20 METERS
NATIONAL GEODETIC VERTICAL DATUM OF 1929

THIS MAP COMPLIES WITH NATIONAL MAP ACCURACY STANDARDS

CONVERSION TABLE		DECLINATION DIAGRAM		ADJOINING MAPS			
Meters	Feet			1	2	3	
1	3.2808						
2	6.5617					4	5
3	9.8425					6	7
4	13.1234						
5	16.4042						
6	19.6850						
7	22.9659						
8	26.2467						
9	29.5275						
10	32.8084						
To convert meters to feet multiply by 3.2808		UTM grid convergence (GN) and 1979 magnetic declination (MN) at center of map Diagram is approximate					
To convert feet to meters multiply by 0.3048				<ul style="list-style-type: none">1 Luyte2 Midwest3 Rattlesnake Hills4 Douglas5 Batrol7 Shirley Basin8 Laramie Park			

FOR SALE BY U. S. GEOLOGICAL SURVEY, DENVER, COLORADO 80225
OR RESTON, VIRGINIA 22092

Topographic Map Symbols

Primary highway, hard surface	
Secondary highway, hard surface	
Light duty road, principal street, hard or improved surface	
Other road or street; trail	
Route marker: Interstate, U. S., State	
Railroad: standard gauge, narrow gauge	
Bridge: overpass, underpass	
Tunnel: road, railroad	
Built up area, locality, elevation	
Airport; landing field, landing strip	
National boundary	
State boundary	
County boundary	
National or State reservation boundary	
Land grant boundary	
U. S. public lands survey: range, township, section	
Range, township, section line: protracted	
Power transmission line; pipeline	
Dam; dam with lock	
Cemetery; building	
Windmill; water well; spring	
Mine shaft; adit or cave; mine, quarry; gravel pit	
Campground; picnic area; U. S. location monument	
Ruins; cliff dwelling	
Distorted surface: strip mine, lava, sand	
Contours: index; intermediate; supplementary	
Bathymetric contours: index; intermediate	
Stream, lake: perennial; intermittent	
Rapids, large and small; falls, large and small	
Area to be submerged; marsh, swamp	
Land subject to controlled inundation; woodland	
Scrub; mangrove	
Orchard; vineyard	

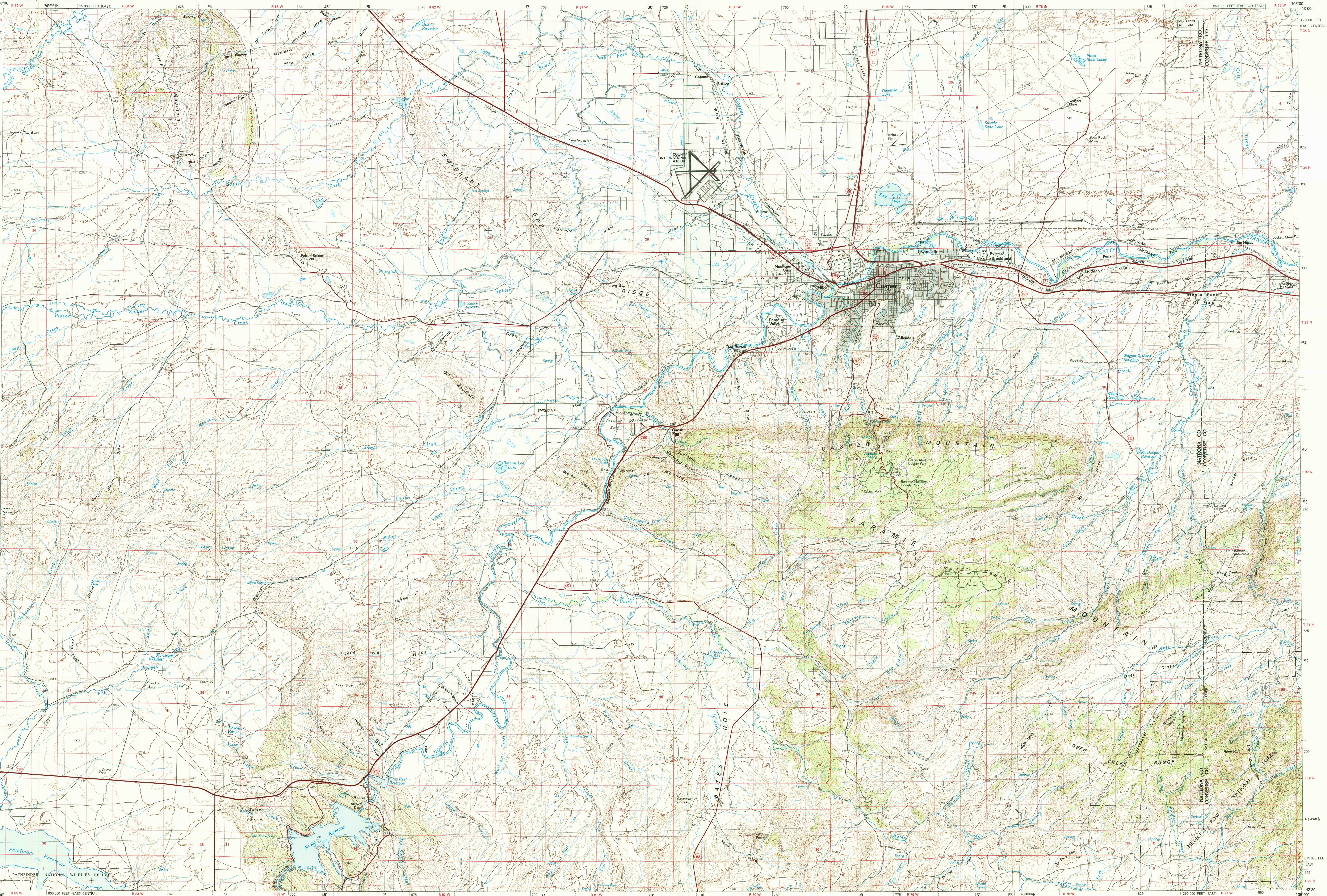
A pamphlet describing topographic maps is available on request



CASPER, WYOMING

N4230-W10600/30x60

1979



INTERIOR—GEOLOGICAL SURVEY, RESTON, VIRGINIA—1980

SCALE 1:100 000
1 CENTIMETER ON MAP REPRESENTS 1 KILOMETER ON THE GROUND
CONTOUR INTERVAL 20 METERS

0 1000 5000 10 000 15 000 20 000 25 000 30 000 35 000 40 000 45 000 50 000 55 000 60 000 65 000 70 000
KILOMETERS 0 1 2 3 4 5 6 7 8 9 10 11 12 13 14 15 16 17 18 19 20
MILES 0 1 2 3 4 5 6 7 8 9 10 11 12