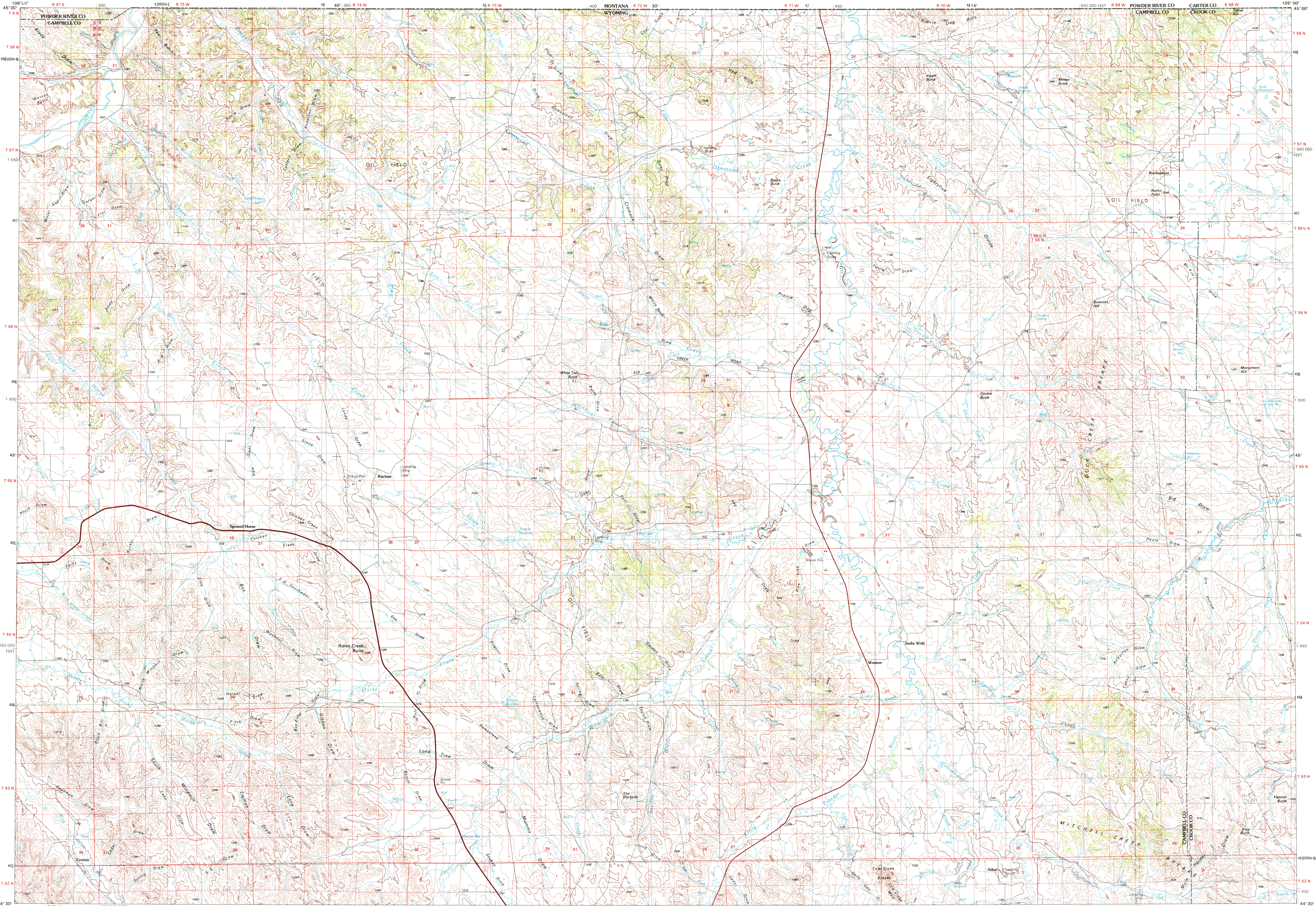


RECLUSE, WYOMING-MONTANA

30X60 MINUTE SERIES (TOPOGRAPHIC)



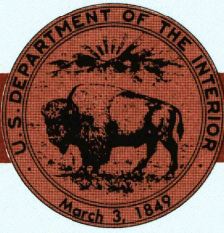
Recluse
WYOMING-MONTANA

1:100 000-scale *metric*
topographic map



30 X 60 MINUTE QUADRANGLE
SHOWING

- Contours and elevations in meters
- Highways, roads and other manmade structures
- Water features
- Woodland areas
- Geographic names



GEOLOGICAL SURVEY

1975

Produced by the United States Geological Survey
Compiled from USGS 1:24 000-scale topographic maps dated 1971-1972. Planimetry revised from other source data. Revised information not field checked Map edited 1975

1927 North American Datum (NAD 27). Projection and 10 000-meter grid: Universal Transverse Mercator, zone 13 50 000-foot ticks: Wyoming coordinate system, east zone The difference between NAD 27 and North American Datum of 1983 (NAD 83) is too small to show at this scale. The values of the shift between the datums for 7.5-minute intersections are given in USGS Bulletin 1875

CONTOUR INTERVAL 20 METERS
NATIONAL GEODETIC VERTICAL DATUM OF 1929
ELEVATIONS SHOWN TO THE NEAREST METER

THIS MAP COMPLIES WITH NATIONAL MAP ACCURACY STANDARDS

CONVERSION TABLE		DECLINATION DIAGRAM	ADJOINING MAPS		
Meters	Feet		1	2	3
1	3.2808		4		5
2	6.5617		6	7	8
3	9.8425				
4	13.1234				
5	16.4042				
6	19.6850				
7	22.9659				
8	26.2467				
9	29.5275				
10	32.8084				
To convert meters to feet multiply by 3.2808		UTM grid convergence (GM) and 1975 magnetic declination (MD) at center of map Diagram is approximate	1	2	3
To convert feet to meters multiply by 0.3048			4	5	6
			7	8	9

FOR SALE BY U.S. GEOLOGICAL SURVEY
DENVER, COLORADO 80225, OR RESTON, VIRGINIA 22092

Topographic Map Symbols

Primary highway, hard surface
Secondary highway, hard surface
Light duty road, principal street, hard or improved surface
Other road or street, trail
Railroad: Interstate, U. S. State
Railroad: standard gage, narrow gage
Bridge, overpass, underpass
Tunnel: road, railroad
Built up area; locality, elevation
Airport; landing field; landing strip
National boundary
State boundary
County boundary
National or State reservation boundary
Land grant boundary
U. S. public lands survey: range, township, section
Range, township; section line: protected
Power transmission line: pipeline
Dam; dam with lock
Geology: building
Windmill; water well; spring
Mine shaft; adit or cave; mine, quarry; gravel pit
Campground; picnic area; U. S. location monument
Ruins; cliff dwelling
Distorted surface: strip mine, lava, sand
Contours: index; intermediate; supplementary
Barometric contours: index, intermediate
Stream: lake, perennial, intermittent
Rapids, large and small; falls, large and small
Area to be submerged; marsh, swamp
Land subject to controlled inundation; woodland
Scrub; mangrove
Orchard; vineyard

A pamphlet describing topographic maps is available on request



USGS Library
Reston, VA.
Topo Archive

RECLUSE, WYOMING-MONTANA

44105-E1-TM-100

1975