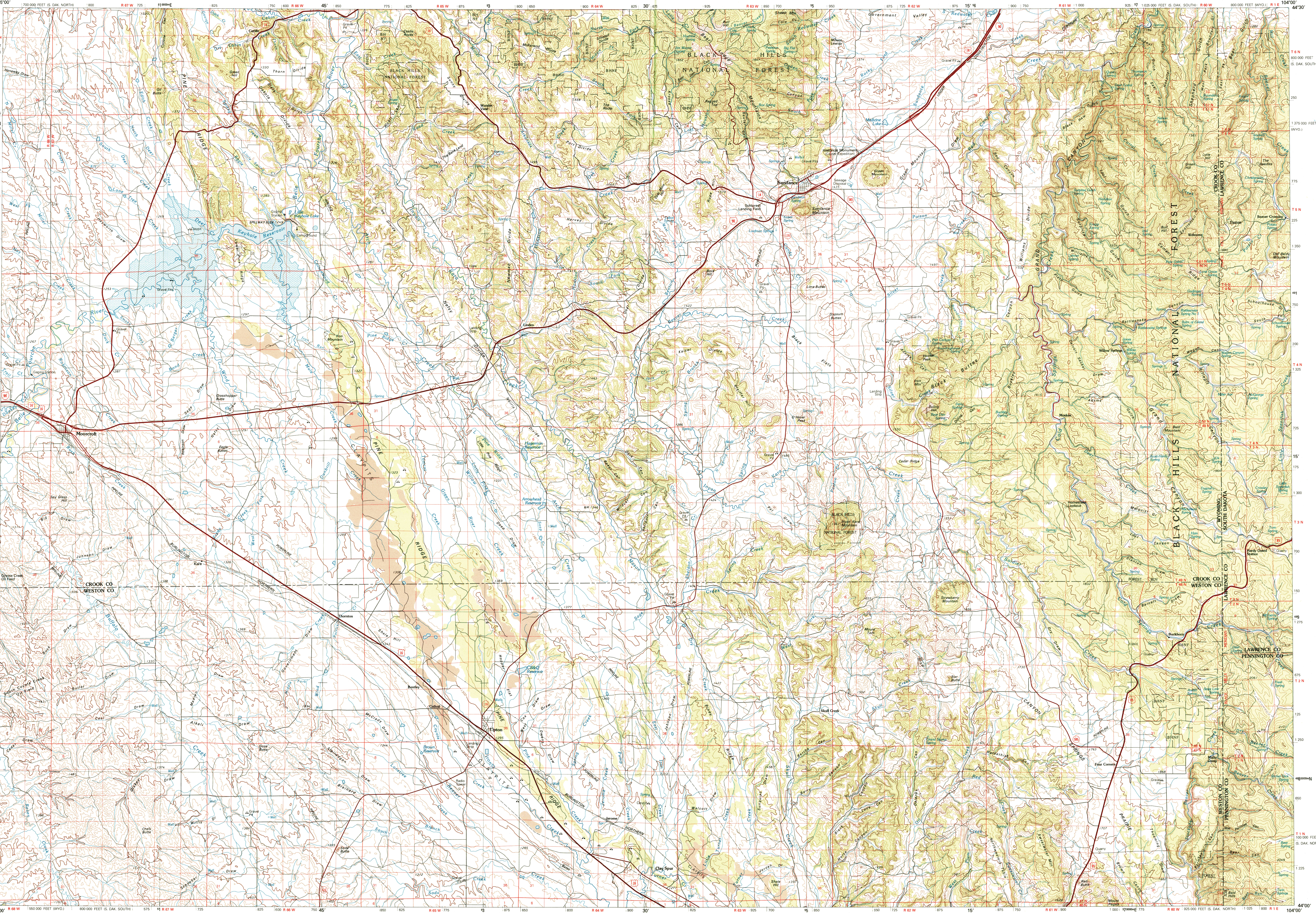
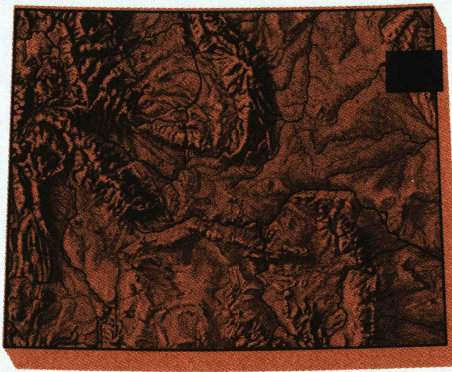


SUNDANCE, WYOMING—SOUTH DAKOTA

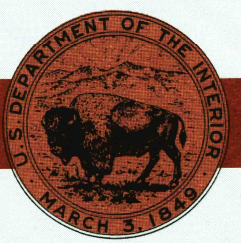


1:100 000-scale metric  
topographic map of  
**Sundance**  
WYOMING—SOUTH DAKOTA



30 X 60 MINUTE QUADRANGLE  
SHOWING

- Contours and elevations in meters
- Highways, roads and other manmade structures
- Water features
- Woodland areas
- Geographic names



GEOLOGICAL SURVEY

1979

Produced by the United States Geological Survey  
in cooperation with the Bureau of Land Management  
Compiled from USGS 1:24 000 and 1:62 500-scale  
topographic maps dated 1957-1979. Map edited 1979.  
Planimetry revised from aerial photographs taken 1975  
and other source data. Revised information not  
field checked.  
Projection and 10 000-meter grid, zone 13.  
Universal Transverse Mercator  
25 000-foot grid ticks based on Wyoming coordinate  
system, east zone and South Dakota coordinate system,  
north and south zones.  
1927 North American Datum  
To place on the predicted North American Datum 1983  
move the projection lines 6 meters north and  
44 meters east.  
There may be private holdings within the boundaries of  
the National or State reservations shown on this map.

CONTOUR INTERVAL 20 METERS  
NATIONAL GEODETIC VERTICAL DATUM OF 1929  
ELEVATIONS SHOWN TO THE NEAREST METER

THIS MAP COMPLIES WITH NATIONAL MAP ACCURACY STANDARDS  
FOR SALE BY U.S. GEOLOGICAL SURVEY,  
P.O. BOX 25286, DENVER, COLORADO, 80225

CONVERSION TABLE		DECLINATION DIAGRAM	ADJOINING MAPS		
Meters	Feet		1	2	3
1	3.2808		1	2	3
2	6.5617		4	5	6
3	9.8425		7	8	9
4	13.1234		10	11	12
5	16.4042		13	14	15
6	19.6850		16	17	18
7	22.9659		19	20	21
8	26.2467		22	23	24
9	29.5276		25	26	27
10	32.8084		28	29	30
To convert meters to feet multiply by 3.2808		UTM grid convergence (GN) and 1979 magnetic declination (MN) at center of map Diagram is approximate	1 Recluse		
To convert feet to meters multiply by 0.3048			2 Devils Tower		
			3 Gillette		
			4 Rapid City		
			5 Rapid City		
			6 Rapid City		
		7 Newcastle			
		8 Mount Rushmore			

ISBN 0-607-13464-7



RECEIVED

APR 3 0 2001

USGS/NAU  
HISTORICAL MAP ARCHIVES

Topographic Map Symbols

Primary highway, hard surface.....	
Secondary highway, hard surface.....	
Light duty road, principal street, hard or improved surface.....	
Other road or street; trail.....	
Route marker: Interstate; U.S.; State.....	
Railroad: standard gage; narrow gage.....	
Bridge: overpass; underpass.....	
Tunnel: road; railroad.....	
Built up area, locality, elevation.....	
Airport; landing field; landing strip.....	
National boundary.....	
State boundary.....	
County boundary.....	
National or State reservation boundary.....	
Land grant boundary.....	
U.S. public lands survey: range, township, section.....	
Range, township, section line: protracted.....	
Power transmission line; pipeline.....	
Dam; dam with lock.....	
Cemetery, building.....	
Windmill; water well; spring.....	
Mine shaft; adit or cave; mine, quarry; gravel pit.....	
Campground; picnic area; U.S. location monument.....	
Ruins; cliff dwelling.....	
Distorted surface: strip mine, lava; sand.....	
Contours: index; intermediate; supplementary.....	
Bathymetric contours; index; intermediate.....	
Stream, lake; perennial; intermittent.....	
Rapids, large and small; falls, large and small.....	
Area to be submerged; marsh, swamp.....	
Land subject to controlled inundation; woodland.....	
Scrub; mangrove.....	
Orchard; vineyard.....	

A pamphlet describing topographic maps is available on request

SUNDANCE, WYOMING—SOUTH DAKOTA  
N4400-W10400/30x60

1979



25%  
RECYCLED PAPER