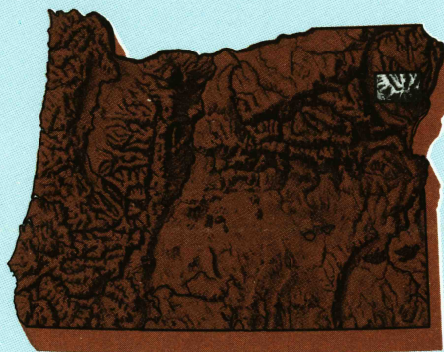


Enterprise
OREGON

1:100 000-scale metric
topographic map



30 X 60 MINUTE QUADRANGLE
SHOWING

- Contours and elevations in meters
- Highways, roads and other manmade structures
- Water features
- Woodland areas
- Geographic names



GEOLOGICAL SURVEY

1986

Produced by the United States Geological Survey

Compiled from USGS 1:24 000 and 1:62 500-scale topographic maps dated 1954-1966. Planimetry revised from aerial photographs taken 1981 and other source data. Revised information not field checked. Map edited 1986

Projection and 10 000-meter grid, zone 11, Universal Transverse Mercator
25 000-foot grid ticks based on Oregon coordinate system, north zone, 1927 North American Datum
To place on the predicted North American Datum 1983 move the projection lines 17 meters north and 80 meters east

There may be private inholdings within the boundaries of the National or State reservations shown on this map

CONTOUR INTERVAL 50 METERS
SUPPLEMENTARY CONTOUR INTERVAL 25 METERS

NATIONAL GEODETIC VERTICAL DATUM OF 1929
ELEVATIONS SHOWN TO THE NEAREST METER

THIS MAP COMPLIES WITH NATIONAL MAP ACCURACY STANDARDS

CONVERSION TABLE		DECLINATION DIAGRAM		ADJOINING MAPS		
Meters	Feet			1	2	3
1	3.2808			4	5	6
2	6.5617			7	8	
3	9.8425					
4	13.1234					
5	16.4042					
6	19.6850					
7	22.9659					
8	26.2467					
9	29.5276					
10	32.8084					
To convert meters to feet multiply by 3.2808		UTM grid convergence (GN) and 1986 magnetic declination (M) at center of map Diagram is approximate		1 Prudden 2 Wallawa 3 Grapenille 4 La Grande 5 Riggins 6 Baker 7 McCall		
To convert feet to meters multiply by 0.3048						

ENTERPRISE

ISBN # 0607454067 OR 100

FOR SALE BY U. S. I.



TM ADO 80225

Topographic Map Symbols

Primary highway, hard surface	
Secondary highway, hard surface	
Light duty road, principal street, hard or improved surface	
Other road or street; trail	
Route marker: Interstate; U. S. State	
Railroad: standard gage; narrow gage	
Bridge; overpass; underpass	
Tunnel: road; railroad	
Built up area; locality; elevation	
Airport; landing field; landing strip	
National boundary	
State boundary	
County boundary	
National or State reservation boundary	
Land grant boundary	
U. S. public lands survey: range, township; section	
Range, township; section line; protracted	
Power transmission line; pipeline	
Dam; dam with lock	
Cemetery; building	
Windmill; water well; spring	
Mine shaft; adit or cave; mine, quarry; gravel pit	
Campground; picnic area; U. S. location monument	
Hunt; cliff dwelling	
Dissected surface: strip mine, lava; sand	
Contours: index; intermediate; supplementary	
Bathymetric contours: index; intermediate	
Stream, lake; perennial; intermittent	
Rapids, large and small; falls, large and small	
Area to be submerged; marsh, swamp	
Land subject to controlled inundation; woodland	
Sorb; mangrove	
Orchard; vineyard	

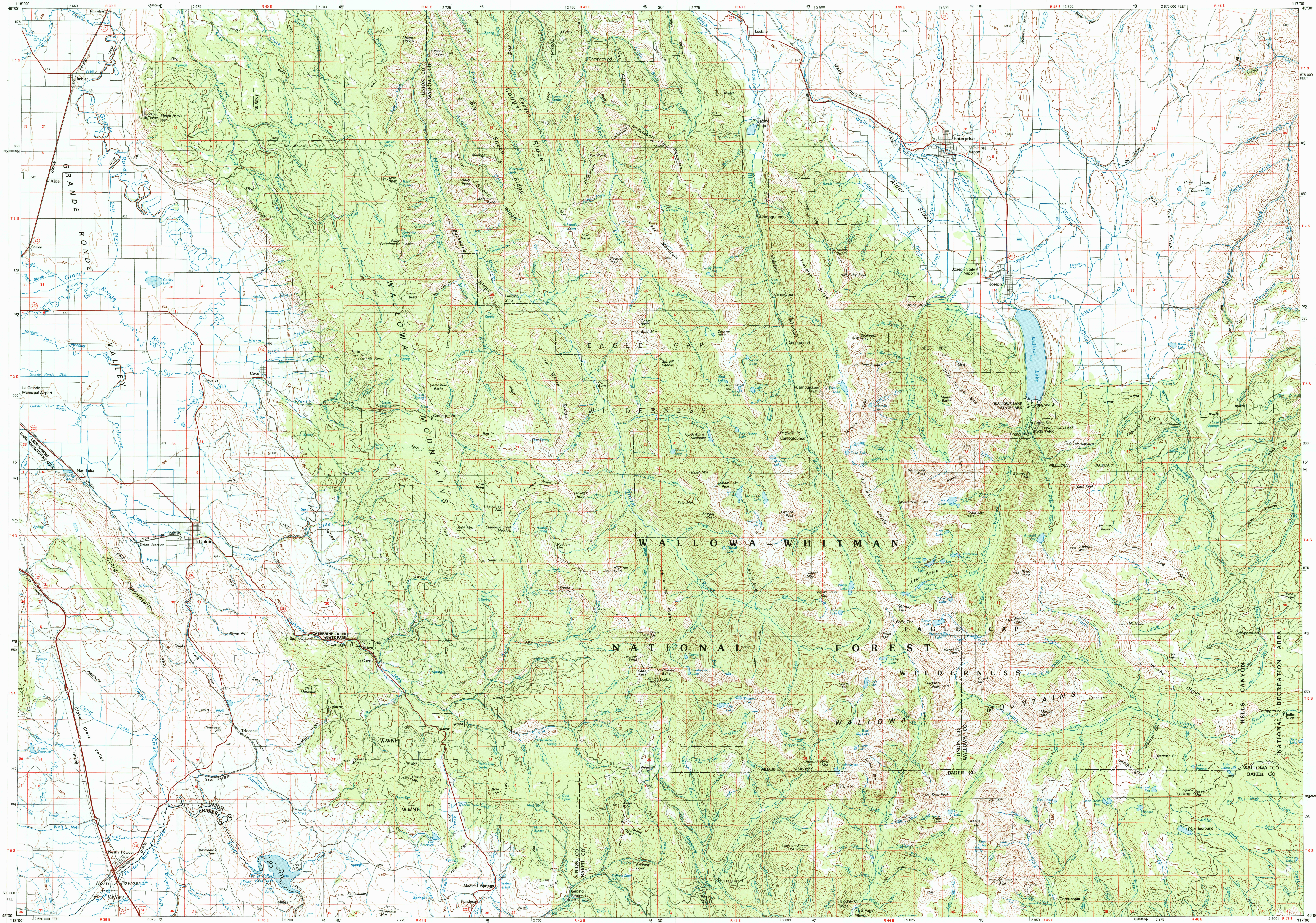
A pamphlet describing topographic maps is available on request

RETURN TO:
NATIONAL MAP ARCHIVES

1986

ENTERPRISE, OREGON

30X60 MINUTE SERIES (TOPOGRAPHIC)



SCALE 1:100 000

1 CENTIMETER ON THE MAP REPRESENTS 1 KILOMETER ON THE GROUND
CONTOUR INTERVAL 50 METERS
SUPPLEMENTARY CONTOUR INTERVAL 25 METERS

ENTERPRISE, OREGON
45117-A1-TM-100