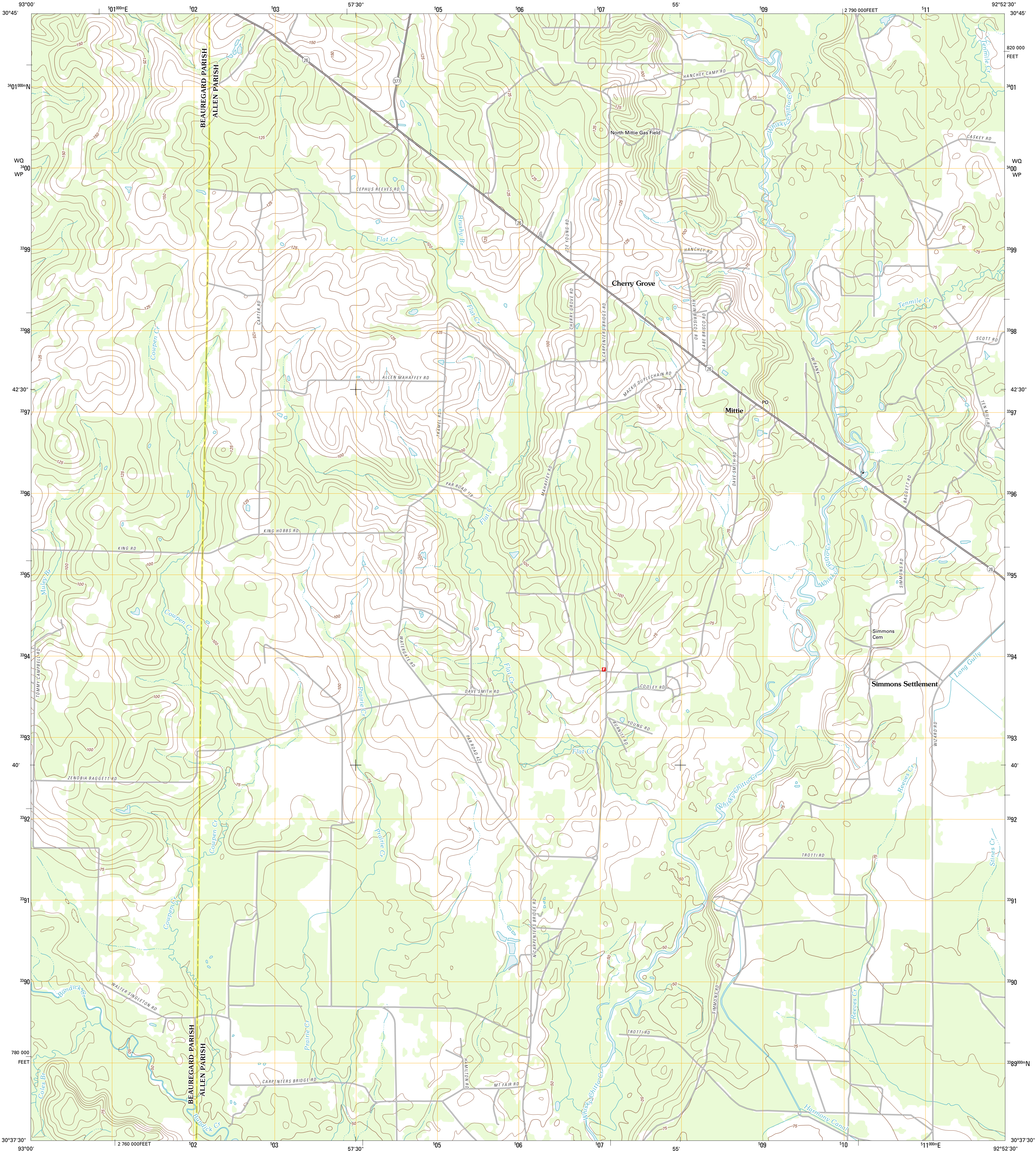




U.S. DEPARTMENT OF THE INTERIOR  
U. S. GEOLOGICAL SURVEY



MITTIE QUADRANGLE  
LOUISIANA  
7.5-MINUTE SERIES

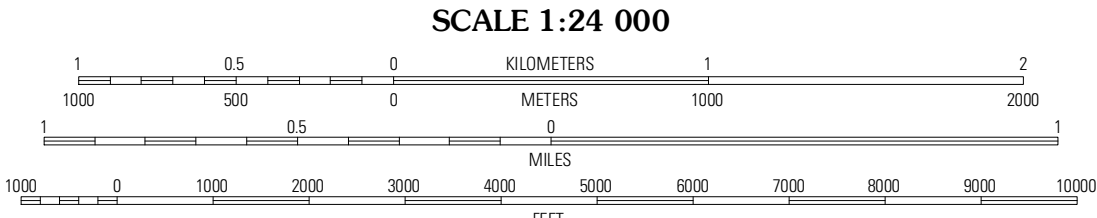


Produced by the United States Geological Survey  
North American Datum of 1983 (NAD83)  
World Geodetic System of 1984 (WGS84). Projection and  
1 000-meter grid: Universal Transverse Mercator, Zone 15R  
10 000-foot ticks: Louisiana Coordinate System of 1983  
(south zone)

Imagery.....NAIP, May 2010  
Roads.....©2006-2011, TomTom  
Names.....GNIS, 2011  
Hydrography.....National Hydrography Dataset, 2010  
Contours.....National Elevation Dataset, 2008  
Boundaries.....Census, IBWC, IBC, USGS, 1972 - 2010

UTM GRID AND 2012 MAGNETIC NORTH  
DECLINATION AT CENTER OF SHEET

U.S. National Grid  
100,000-m Square ID  
WG  
WP  
Grid Zone Designation  
15R



CONTOUR INTERVAL 5 FEET  
NORTH AMERICAN VERTICAL DATUM OF 1988

This map was produced to conform with the  
National Geospatial Program US Topo Product Standard, 2011.  
A metadata file associated with this product is draft version 0.6.1



QUADRANGLE LOCATION

|           |          |             |
|-----------|----------|-------------|
| Sugartown | Grant    | Elizabeth   |
| Dry Creek | Mittle   | Pine Chapel |
| Reeves    | Le Blanc | Oberlin     |

ROAD CLASSIFICATION

Interstate Route  
US Route  
Ramp

State Route  
Local Road  
4WD

Interstate Route  
US Route  
State Route

MITTIE, LA  
2012