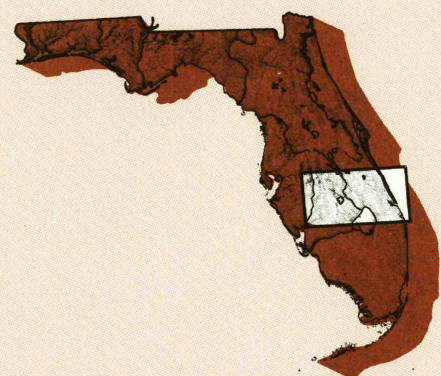


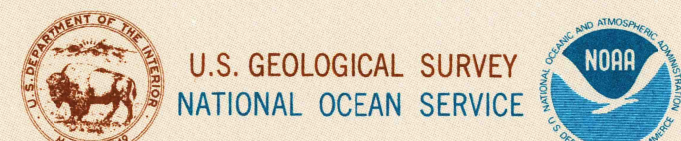
Fort Pierce FLORIDA

1:250 000-scale metric
topographic-bathymetric map



1 X 2 DEGREE QUADRANGLE SHOWING

- Contours and elevations in meters
- Highways, roads and other manmade structures
- Water features
- Woodland areas
- Geographic names
- Bathymetric contours in meters



Produced by the United States Geological Survey and the National Ocean Service
Compiled from 1:500 000-scale topographic maps dated 1978-1986
Flattened from aerial photographs taken in 1984 and other sources
Revised information not field checked. Supercedes map dated 1972
Map edited 1988
Bathymetry compiled by the National Ocean Service from tide-coordinated hydrographic surveys. This information is not intended for navigational purposes. Mean lower low water (dotted line) and mean high water (solid line) compiled by NOS from tide-coordinated aerial photographs
Oblique projection survey data, shown in red, furnished by the Minerals Management Service. Heavy lines indicate limits of Outer Continental Shelf Official Protection Diagram dated February 2, 1977. The protection on this map are not for Federal leasing purposes; for such purposes, refer to OCS Official Protection Diagram available from the Minerals Management Service
Projection and 10 000-meter grid, zone 17; Universal Transverse Mercator 100 000-foot grid ticks based on Florida coordinate system, east and west zones, 1927 North American Datum. To place on the predicted North American Datum 1983, move the projection lines 31 meters south and 40 meters west
Location of geodetic control established by government agencies is shown on corresponding 1:250 000-scale Geodetic Control Diagram
There may be private inholdings within the boundaries of the National or State reservations shown on this map

1988 MAGNETIC DECLINATION FROM TRUE NORTH VARIES FROM 2°14' MILES WESTERLY FOR THE CENTER OF THE WEST EDGE TO 4° (71 MILES) WESTERLY FOR THE CENTER OF THE EAST EDGE. MEAN ANNUAL CHANGE IS 8.5 WESTERLY

CONTOUR INTERVAL 10 METERS
NATIONAL GEODETIC DATUM OF 1929
ELEVATIONS SHOWN TO THE NEAREST METER
BATHYMETRIC CONTOUR INTERVAL 10 METERS
WITH SUPPLEMENTARY 2 METER CONTOURS
DATUM IS MEAN LOWER LOW WATER
THE RELATIONSHIP BETWEEN THE TWO DATUMS IS VARIABLE
SOUNDING DATUM FOR LAKE OKEECHOBEE IS 15 FEET ABOVE MEAN LOWER LOW WATER AT ROLLA RIVER

BASE MAP COMPLES WITH NATIONAL MAP ACCURACY STANDARDS. BATHYMETRIC SURVEY DATA COMPLES WITH INTERNATIONAL HYDROGRAPHIC BUREAU (IHO) SPECIAL PUBLICATION 44 ACCURACY STANDARDS AND/OR STANDARDS USED AS OF THE DATE OF THE SURVEY

CONVERSION TABLE			
Meters	Feet	Meters	Feet
1	3.2808	1	3.2808
2	6.5616	2	6.5616
3	9.8425	3	9.8425
4	13.1234	4	13.1234
5	16.4042	5	16.4042
6	19.6850	6	19.6850
7	22.9659	7	22.9659
8	26.2467	8	26.2467
9	29.5276	9	29.5276
10	32.8084	10	32.8084

ADJOINING MAPS			
1	2	3	
4	5	6	7
8			

1 Tampa Springs
2 Orlando
3 Pithsburg
4 St. Petersburg
5 Walker Cay
6 Charlotte Harbor
7 West Palm Beach
8 Bahamas*

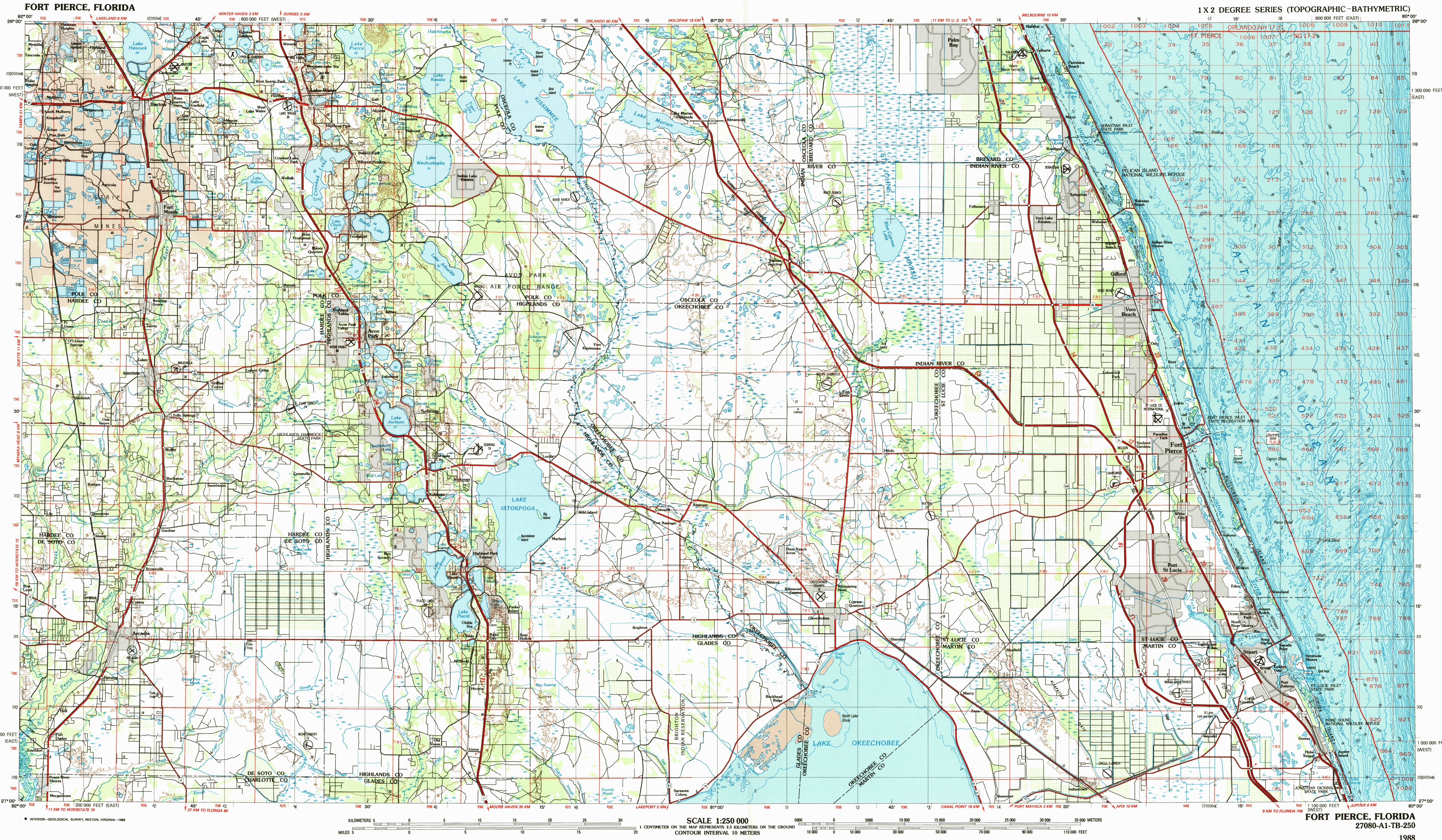
To convert meters to feet multiply by 3.2808
To convert feet to meters multiply by 0.3048

FOR SALE BY U.S. GEOLOGICAL SURVEY
DENVER, COLORADO 80225, OR RESTON, VIRGINIA 22092
AND NATIONAL OCEAN SERVICE, ROCKVILLE, MARYLAND 20852
*BATHYMETRIC MAPS FOR SALE BY NOS ONLY

Topographic Map Symbols

- Figures in red denote approximate distances in kilometers between markers
- Dual highway, interchange
 - Primary highway, hard surface
 - Secondary highway, hard surface
 - Light duty road, hard or improved surface
 - Over road, trail
 - Road marker: Interstate, U.S., State
 - Bridge, overpass, underpass
 - Tunnel: road, railroad
 - Railroad: standard gauge, single, multiple track
 - Railroad: narrow gauge, single, multiple track
 - Build-up area: locality, elevation
 - Airport: runway pattern known, unknown
 - National boundary
 - State boundary
 - County boundary
 - National or State reservation boundary
 - Land grant boundary
 - U.S. public lands survey: range, township (surveyed)
 - U.S. public lands survey: range, township (unsurveyed)
 - Powerline: pipeline, aboveground, underground
 - Dam; landmark feature: landmark building
 - Well, water, other, spring, tank
 - Cave, mine, quarry, oil platform
 - Landmark area: landmark, railroad
 - Disturbed surface: strip mine, lava, sand
 - Contour: index, intermediate, supplementary
 - Bathymetric contour: index, primary
 - Bathymetric contour: index, intermediate, supplementary
 - Stream, lake, perennial: intermittent
 - Rapids, large and small, falls, large and small
 - Land subject to controlled inundation: marsh, swamp
 - Woodland: orchard, vineyard

A pamphlet describing topographic maps is available on request



SCALE 1:250 000
1 CENTIMETER ON THE MAP REPRESENTS 2.5 KILOMETERS ON THE GROUND
CONTOUR INTERVAL: 10 METERS

HYDROGRAPHIC SURVEY INFORMATION

SURVEY NUMBER	SURVEY DATE	SURVEY SCALE	SURVEY LINE SPACING (NAUT. MILES)	SURVEY NUMBER	SURVEY DATE	SURVEY SCALE	SURVEY LINE SPACING (NAUT. MILES)
H-1416	1878	1:20,000	06-30	H-5032	1930	1:40,000	06-20
H-1481	1881	1:20,000	06-30	H-5033	1930	1:40,000	06-20
H-1481b	1881	1:20,000	06-30	H-5034	1930	1:40,000	06-20
H-1510	1882	1:20,000	06-30	H-5035	1930	1:40,000	06-20
H-1510a	1882	1:20,000	06-30	H-5036	1930	1:40,000	06-20
H-1510b	1882	1:20,000	06-30	H-5037	1930	1:40,000	06-20
H-1510c	1882	1:20,000	06-30	H-5038	1930	1:40,000	06-20
H-1510d	1882	1:20,000	06-30	H-5039	1930	1:40,000	06-20
H-1510e	1882	1:20,000	06-30	H-5040	1930	1:40,000	06-20
H-1510f	1882	1:20,000	06-30	H-5041	1930	1:40,000	06-20
H-1510g	1882	1:20,000	06-30	H-5042	1930	1:40,000	06-20
H-1510h	1882	1:20,000	06-30	H-5043	1930	1:40,000	06-20
H-1510i	1882	1:20,000	06-30	H-5044	1930	1:40,000	06-20
H-1510j	1882	1:20,000	06-30	H-5045	1930	1:40,000	06-20
H-1510k	1882	1:20,000	06-30	H-5046	1930	1:40,000	06-20
H-1510l	1882	1:20,000	06-30	H-5047	1930	1:40,000	06-20
H-1510m	1882	1:20,000	06-30	H-5048	1930	1:40,000	06-20
H-1510n	1882	1:20,000	06-30	H-5049	1930	1:40,000	06-20
H-1510o	1882	1:20,000	06-30	H-5050	1930	1:40,000	06-20
H-1510p	1882	1:20,000	06-30	H-5051	1930	1:40,000	06-20
H-1510q	1882	1:20,000	06-30	H-5052	1930	1:40,000	06-20
H-1510r	1882	1:20,000	06-30	H-5053	1930	1:40,000	06-20
H-1510s	1882	1:20,000	06-30	H-5054	1930	1:40,000	06-20
H-1510t	1882	1:20,000	06-30	H-5055	1930	1:40,000	06-20
H-1510u	1882	1:20,000	06-30	H-5056	1930	1:40,000	06-20
H-1510v	1882	1:20,000	06-30	H-5057	1930	1:40,000	06-20
H-1510w	1882	1:20,000	06-30	H-5058	1930	1:40,000	06-20
H-1510x	1882	1:20,000	06-30	H-5059	1930	1:40,000	06-20
H-1510y	1882	1:20,000	06-30	H-5060	1930	1:40,000	06-20
H-1510z	1882	1:20,000	06-30	H-5061	1930	1:40,000	06-20
H-1510aa	1882	1:20,000	06-30	H-5062	1930	1:40,000	06-20
H-1510ab	1882	1:20,000	06-30	H-5063	1930	1:40,000	06-20
H-1510ac	1882	1:20,000	06-30	H-5064	1930	1:40,000	06-20
H-1510ad	1882	1:20,000	06-30	H-5065	1930	1:40,000	06-20
H-1510ae	1882	1:20,000	06-30	H-5066	1930	1:40,000	06-20
H-1510af	1882	1:20,000	06-30	H-5067	1930	1:40,000	06-20
H-1510ag	1882	1:20,000	06-30	H-5068	1930	1:40,000	06-20
H-1510ah	1882	1:20,000	06-30	H-5069	1930	1:40,000	06-20
H-1510ai	1882	1:20,000	06-30	H-5070	1930	1:40,000	06-20
H-1510aj	1882	1:20,000	06-30	H-5071	1930	1:40,000	06-20
H-1510ak	1882	1:20,000	06-30	H-5072	1930	1:40,000	06-20
H-1510al	1882	1:20,000	06-30	H-5073	1930	1:40,000	06-20
H-1510am	1882	1:20,000	06-30	H-5074	1930	1:40,000	06-20
H-1510an	1882	1:20,000	06-30	H-5075	1930	1:40,000	06-20
H-1510ao	1882	1:20,000	06-30	H-5076	1930	1:40,000	06-20
H-1510ap	1882	1:20,000	06-30	H-5077	1930	1:40,000	06-20
H-1510aq	1882	1:20,000	06-30	H-5078	1930	1:40,000	06-20
H-1510ar	1882	1:20,000	06-30	H-5079	1930	1:40,000	06-20
H-1510as	1882	1:20,000	06-30	H-5080	1930	1:40,000	06-20
H-1510at	1882	1:20,000	06-30	H-5081	1930	1:40,000	06-20
H-1510au	1882	1:20,000	06-30	H-5082	1930	1:40,000	06-20
H-1510av	1882	1:20,000	06-30	H-5083	1930	1:40,000	06-20
H-1510aw	1882	1:20,000	06-30	H-5084	1930	1:40,000	06-20
H-1510ax	1882	1:20,000	06-30	H-5085	1930	1:40,000	06-20
H-1510ay	1882	1:20,000	06-30	H-5086	1930	1:40,000	06-20
H-1510az	1882	1:20,000	06-30	H-5087	1930	1:40,000	06-20
H-1510ba	1882	1:20,000	06-30	H-5088	1930	1:40,000	06-20
H-1510bb	1882	1:20,000	06-30	H-5089	1930	1:40,000	06-20
H-1510bc	1882	1:20,000	06-30	H-5090	1930	1:40,000	06-20
H-1510bd	1882	1:20,000	06-30	H-5091	1930	1:40,000	06-20
H-1510be	1882	1:20,000	06-30	H-5092	1930	1:40,000	06-20
H-1510bf	1882	1:20,000	06-30	H-5093	1930	1:40,000	06-20
H-1510bg	1882	1:20,000	06-30	H-5094	1930	1:40,000	06-20
H-1510bh	1882	1:20,000	06-30	H-5095	1930	1:40,000	06-20
H-1510bi	1882	1:20,000	06-30	H-5096	1930	1:40,000	06-20
H-1510bj	1882	1:20,000	06-30	H-5097	1930	1:40,000	06-20
H-1510bk	1882	1:20,000	06-30	H-5098	1930	1:40,000	06-20
H-1510bl	1882	1:20,000	06-30	H-5099	1930	1:40,000	06-20
H-1510bm	1882	1:20,000	06-30	H-5100	1930	1:40,000	06-20
H-1510bn	1882	1:20,000	06-30	H-5101	1930	1:40,000	06-20
H-1510bo	1882	1:20,000	06-30	H-5102	1930	1:40,000	06-20
H-1510bp	1882	1:20,000	06-30	H-5103	1930	1:40,000	06-20
H-1510bq	1882	1:20,000	06-30	H-5104	1930	1:40,000	06-20
H-1510br	1882	1:20,000	06-30	H-5105	1930	1:40,000	06-20
H-1510bs	1882	1:20,000	06-30	H-5106	1930	1:40,000	06-20
H-1510bt	1882	1:20,000	06-30	H-5107	1930	1:40,000	06-20
H-1510bu	1882	1:20,000	06-30	H-5108	1930	1:40,000	06-20
H-1510bv	1882	1:20,000	06-30	H-5109	1930	1:40,000	06-20
H-1510bw	1882	1:20,000	06-30	H-5110	1930	1:40,000	06-20
H-1510bx	1882	1:20,000	06-30	H-5111	1930	1:40,000	06-20
H-1510by	1882	1:20,000	06-30	H-5112	1930	1:40,000	06-20
H-1510bz	1882	1:20,000	06-30	H-5113	1930	1:40,000	06-20
H-1510ca	1882	1:20,000	06-30	H-5114	1930	1:40,000	06-20
H-1510cb	1882	1:20,000	06-30	H-5115	1930	1:40,000	06-20
H-1510cc	1882	1:20,000	06-30	H-5116	1930	1:40,000	06-20
H-1510cd	1882	1:20,000	06-30	H-5117	1930	1:40,000	06-20
H-1510ce	1882	1:20,000	06-30	H-5118	1930	1:40,000	06-20
H-1510cf	1882	1:20,000	06-30	H-5119	1930	1:40,000	06-20
H-1510cg	1882	1:20,000	06-30	H-5120	1930	1:40,000	06-20
H-1510ch	1882	1:20,000	06-30	H-5121	1930	1:40,000	06-20
H-1510ci	1882	1:20,000	06-30	H-5122	1930	1:40,000	06-20
H-1510cj	1882	1:20,000	06-30	H-5123	1930	1:40,000	06-20
H-1510ck	1882	1:20,000	06-30	H-5124	1930	1:40,000	06-20
H-1510cl	1882	1:20,000	06-30	H-5125	1930	1:40,000	06-20
H-1510cm	1882	1:20,000	06-30	H-5126	1930	1:40,000	06-20
H-1510cn	1882	1:20,000	06-30	H-5127	1930	1:40,000	06-20
H-1510co	1882	1:20,000	06-30	H-5128	1930	1:40,000	06-20
H-1510cp	1882	1:20,000	06-30	H-5129	1930	1:40,000	06-20
H-1510cq	1882	1:20,000	06-30	H-5130	1930	1:40,000	06-20
H-1510cr	1882	1:20,000	06-30	H-5131	1930	1:40,000	06-20
H-1510cs	1882	1:20,000	06-30	H-5132	1930	1:40,000	06-20
H-1510ct	1882	1:20,000	06-30	H-5133	1930	1:40,000	06-20
H-1510cu	1882	1:20,000	06-30	H-5134	1930	1:40,000	06-20
H-1510cv	1882	1:20,000	06-30	H-5135	1930	1:40,000	06-20
H-1510cw	1882	1:20,000	06-30	H-5136	1930	1:40,000	06-20
H-1510cx	1882	1:20,000	06-30	H-5137	1930	1:40,000	06-20
H-1510cy	1882	1:20,000	06-30	H-5138	1930	1:40,000	06-20
H-1510cz	1882	1:20,000	06-30	H-5139	1930	1:40,000	06-20
H-1510da	1882	1:20,000	06-30	H-5140	1930	1:40,000	06-20
H-1510db	1882	1:20,000	06-30	H-5141	1930	1:40,000	06-20
H-1510dc	1882	1:20,000	06-30	H-5142	1930	1:40,000	06-20
H-1510dd	1882	1:20,000	06-30	H-5143	1930	1:40,000	06-20
H-1510de	1882	1:20,000	06-30	H-5144	1930	1:40,000	06-20
H-1510df	1882	1:20,000	06-30	H-5145	1930	1:40,000	06-20
H-1510dg	1882	1:20,000	06-30	H-5146	1930	1:40,000	06-20
H-1510dh	1882	1:20,000	06-30	H-5147	1930	1:40,000	06-20
H-1510di	1882	1:20,000	06-30	H-5148	1930	1:40,000	06-20
H-1510dj	1882	1:20,000	06-30	H-5149	1930	1:40,000	06-20
H-1510dk	1882	1:20,000	06-30	H-5150	1930	1:40,000	06-20
H-1510dl	1882	1:20,000	06-30	H-5151	1930	1:40,000	06-20
H-1510dm	1882	1:20,000	06-30	H-5152	1930	1:40,000	06-20
H-1510dn	1882	1:20,000	06-30	H-5153	1930	1:40,000	06-20
H-1510do	1882	1:20,000	06-30	H-5154	1930	1:40,000	06-20
H-1510dp	1882	1:20,000	06-30	H-5155	1930	1:40,000	06-20
H-1510dq	1882	1:20,000	06-30	H-5156	1930	1:40,000	06-20
H-1510dr	1882	1:20,000	06-30	H-5157	1930	1:40,000	06-20
H-1510ds	1882	1:20,000	06-30	H-5158	1930	1:40,000	06-20
H-1510dt	1882	1:20,000	06-30	H-5159	1930	1:40,000	06-20
H-1510du	1882	1:20,000	06-30	H-5160	1930	1:40,000	06-20
H-1510dv	1882	1:20,000	06-30	H-5161	1930	1:40,000	06-20
H-1510dw	1882	1:20,000	06-30	H-5162	1930	1:40,000	06-20
H-1510dx	1882	1:20,000	06-30	H-5163	1930	1:40,000	06-20
H-1510dy	1882	1:20,000	06-30	H-5164	1930	1:40,000	06-20
H-1510dz	1882	1:20,000	06-30	H-5165	1930	1:40,000	06-20
H-1510ea	1882	1:20,000	06-30	H-5166	1930	1:40,000	06-20
H-1510eb	1882	1:20,000	06-30	H-5167	1930	1:40,000	06-20
H-1510ec	1882	1:20,000	06-30	H-5168	1930	1:40,000	06-20
H-1510ed	1882	1:20,000	06-30	H-5169	1930	1:40,000	06-20
H-1510ee							