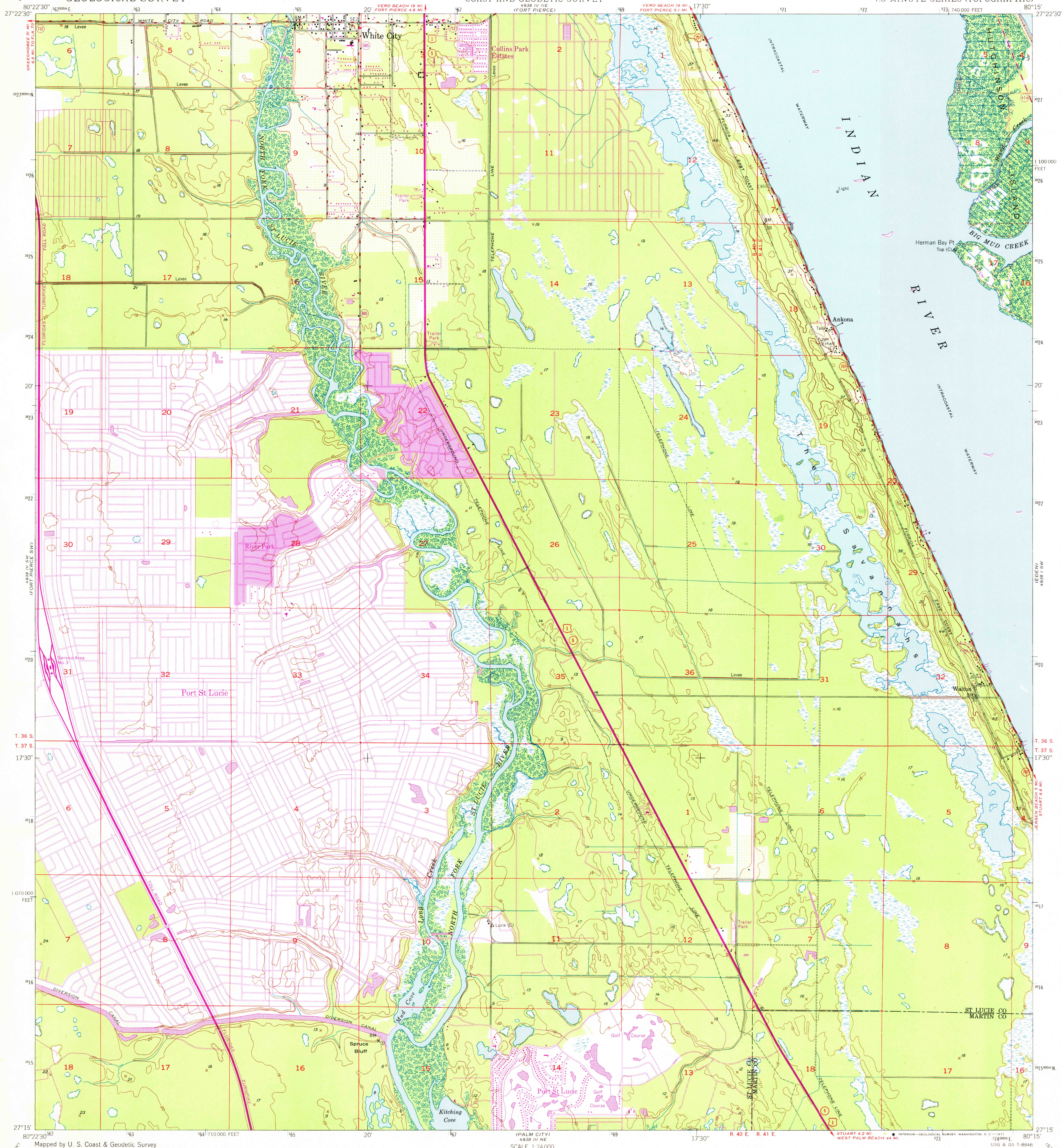


UNITED STATES
DEPARTMENT OF THE INTERIOR
GEOLOGICAL SURVEY

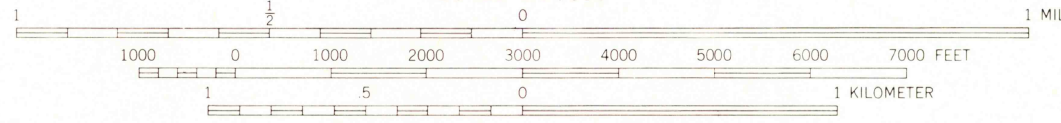
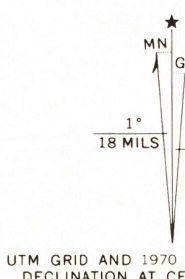
UNITED STATES
DEPARTMENT OF COMMERCE
COAST AND GEODETIC SURVEY
(FORT PIERCE)

ANKONA QUADRANGLE
FLORIDA
7.5 MINUTE SERIES (TOPOGRAPHIC)



Mapped by U. S. Coast & Geodetic Survey
Edited and published by the Geological Survey
Control by USC&GS (C) and USED (E)
Culture and drainage in part compiled
from aerial photographs taken 1946
Topography by plane-table methods 1948
Polyconic projection. 1927 North American datum
10,000-foot grid based on Florida coordinate system,
east zone
No distinction is made between dwellings, barns,
commercial, and industrial buildings
Dashed land lines indicate approximate location
1000-meter Universal Transverse Mercator grid ticks,
zone 17, shown in blue

Revisions shown in purple compiled by the Geological Survey from
aerial photographs taken 1970. This information not field checked
Purple tint indicates extension of urban areas



CONTOUR INTERVAL 5 FEET
DATUM IS MEAN SEA LEVEL
SHORELINE SHOWN REPRESENTS THE APPROXIMATE LINE OF MEAN HIGH WATER
THE AVERAGE RANGE OF TIDE IS APPROXIMATELY 1 FOOT

THIS MAP COMPLIES WITH NATIONAL MAP ACCURACY STANDARDS
FOR SALE BY U. S. GEOLOGICAL SURVEY, WASHINGTON, D. C. 20242
A FOLDER DESCRIBING TOPOGRAPHIC MAPS AND SYMBOLS IS AVAILABLE ON REQUEST



ROAD CLASSIFICATION
HARD-SURFACE ALL WEATHER ROADS DRY WEATHER ROADS
Heavy-duty 4 LANE 18' LANE Improved dirt
Medium-duty 4 LANE 18' LANE Unimproved dirt
Loose-surface, graded, or narrow hard-surface
U. S. Route State Route
USGS
Historical File
Topographic Division
ANKONA, FLA.
N2715-W8015/7.5
1948
PHOTOREVISED 1970
AMS 4938 IV SE-SERIES V847

MAR 15 1978