

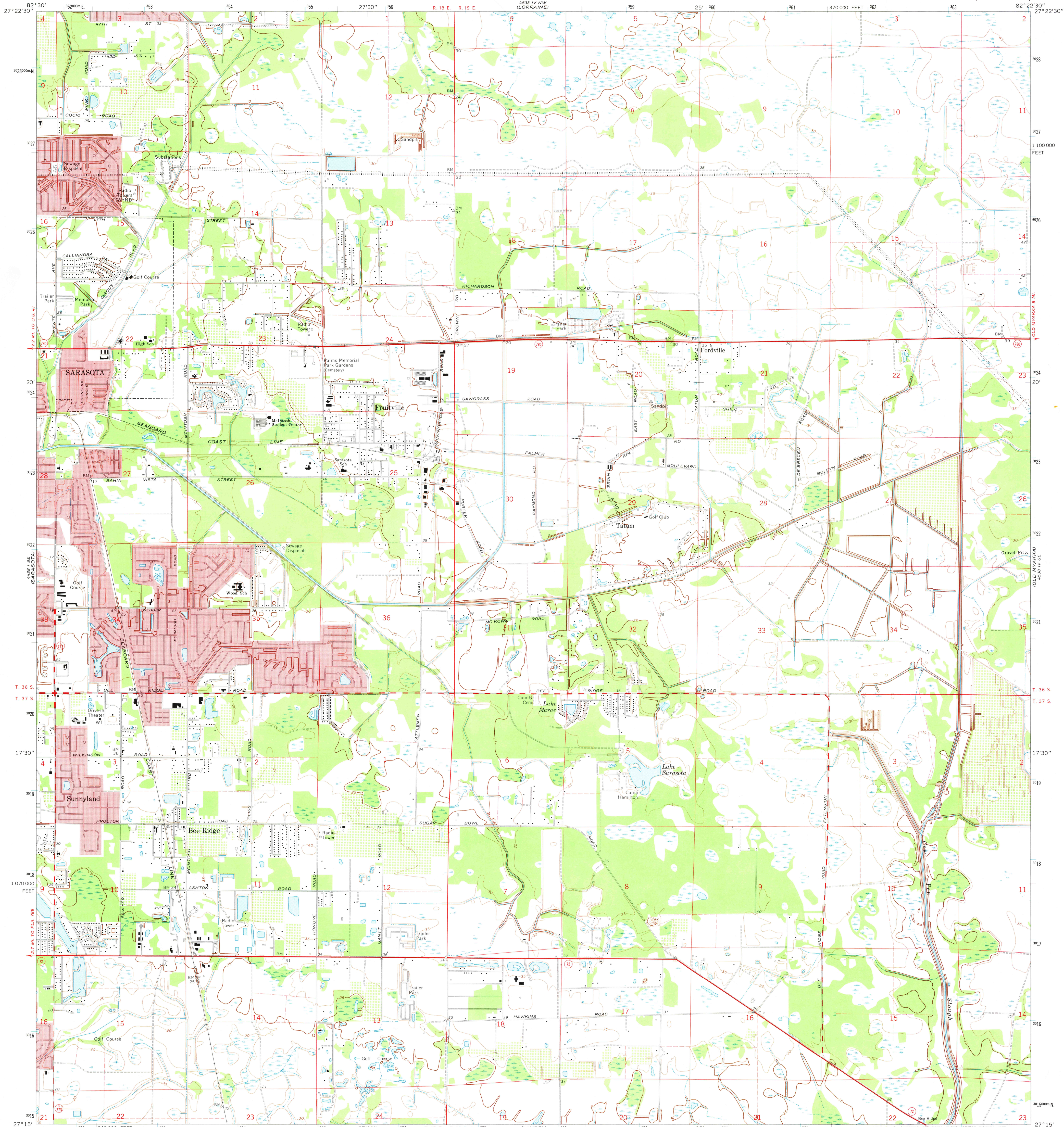
4438 IV NE
GRADATION

UNITED STATES
DEPARTMENT OF THE INTERIOR
GEOLOGICAL SURVEY

STATE OF FLORIDA

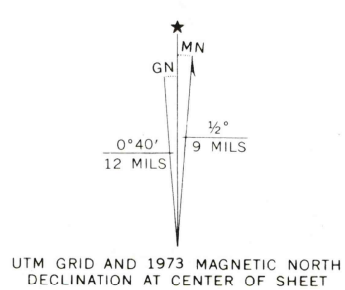
BEE RIDGE QUADRANGLE
FLORIDA—SARASOTA CO.
7.5 MINUTE SERIES (TOPOGRAPHIC)

4438 IV NE
(NORMAL)



4438 IV SE
GRADATION

Maped, edited, and published by the Geological Survey
Control by USGS, USC&GS, and Florida Geodetic Survey
Topography by photogrammetric methods from aerial
photographs taken December 1971. Field checked 1973
Supersedes Army Map Service map dated 1944
Projection and 10,000-foot grid ticks: Florida coordinate
system, west zone (transverse Mercator)
1000-meter Universal Transverse Mercator grid ticks,
zone 17, shown in blue. 1927 North American datum
Fine red dashed lines indicate selected fence and field lines where
generally visible on aerial photographs. This information is unchecked
Red tint indicates areas in which only landmark buildings are shown



THIS MAP COMPLIES WITH NATIONAL MAP ACCURACY STANDARDS
FOR SALE BY U. S. GEOLOGICAL SURVEY, RESTON, VIRGINIA 22092
A FOLDER DESCRIBING TOPOGRAPHIC MAPS AND SYMBOLS IS AVAILABLE ON REQUEST



ROAD CLASSIFICATION
Primary highway, hard surface
Secondary highway, hard surface
Unimproved road
Interstate Route
U. S. Route
State Route
Light-duty road, hard or improved surface
Unimproved road
Interstate Route
U. S. Route
State Route
MAR 21 1975
BEE RIDGE, FLA.
N2715-W8222.5/7.5
1973
AMS 4538 IV SW—SERIES V847

4438 IV SE
(LOWER MYAKKA LANE)

3/17/75
3500-W
150-P
50 Phani