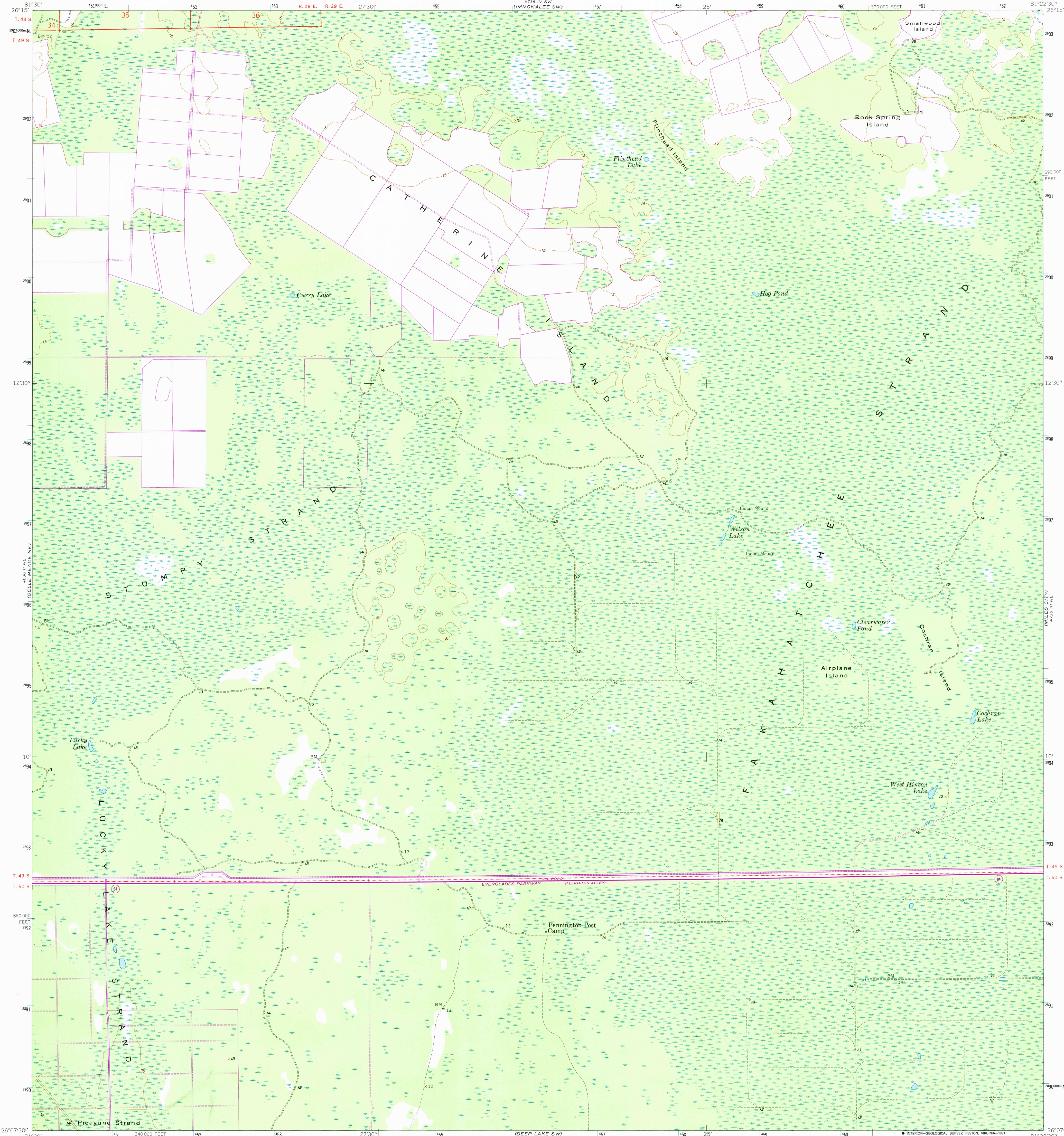


UNITED STATES
DEPARTMENT OF THE INTERIOR
GEOLOGICAL SURVEY

CATHERINE ISLAND QUADRANGLE
FLORIDA—COLLIER CO.
7.5 MINUTE SERIES (TOPOGRAPHIC)



Mapped, edited, and published by the Geological Survey
Control by USGS and USC&GS

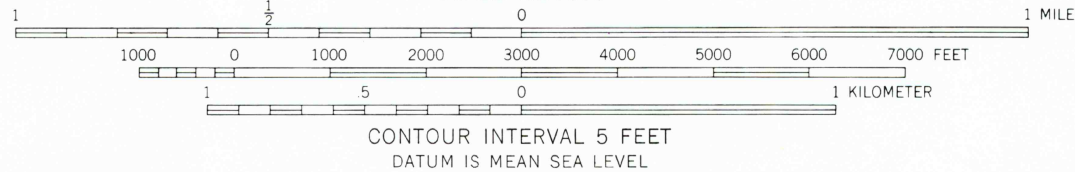
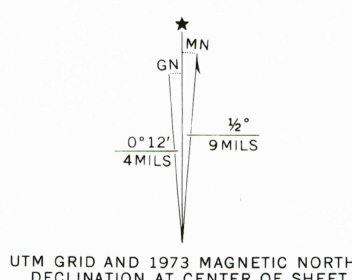
Culture and drainage in part compiled from aerial photographs
taken 1951–1952. Topography by planetable surveys 1958

Polyconic projection. 1927 North American datum
10,000-foot grid based on Florida coordinate system, east zone
1000-meter Universal Transverse Mercator grid ticks,
zone 17, shown in blue

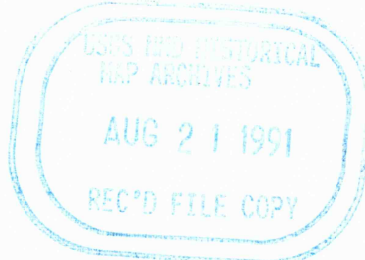
Dotted land lines established by private survey

Revisions shown in purple compiled from aerial photographs
taken 1973. This information not field checked

Map photorevised 1990
No major culture or drainage changes observed



THIS MAP COMPLIES WITH NATIONAL MAP ACCURACY STANDARDS
FOR SALE BY U.S. GEOLOGICAL SURVEY
DENVER, COLORADO 80225, OR RESTON, VIRGINIA 22092
A FOLDER DESCRIBING TOPOGRAPHIC MAPS AND SYMBOLS IS AVAILABLE ON REQUEST



ROAD CLASSIFICATION
Heavy-duty ——— Unimproved dirt - - - - -

CATHERINE ISLAND, FLA.
N 2607.5—W 8122.5/7.5
PHOTOINSPECTED 1990
PHOTOREVISED 1973
AMS 4736 III NW—SERIES Y847