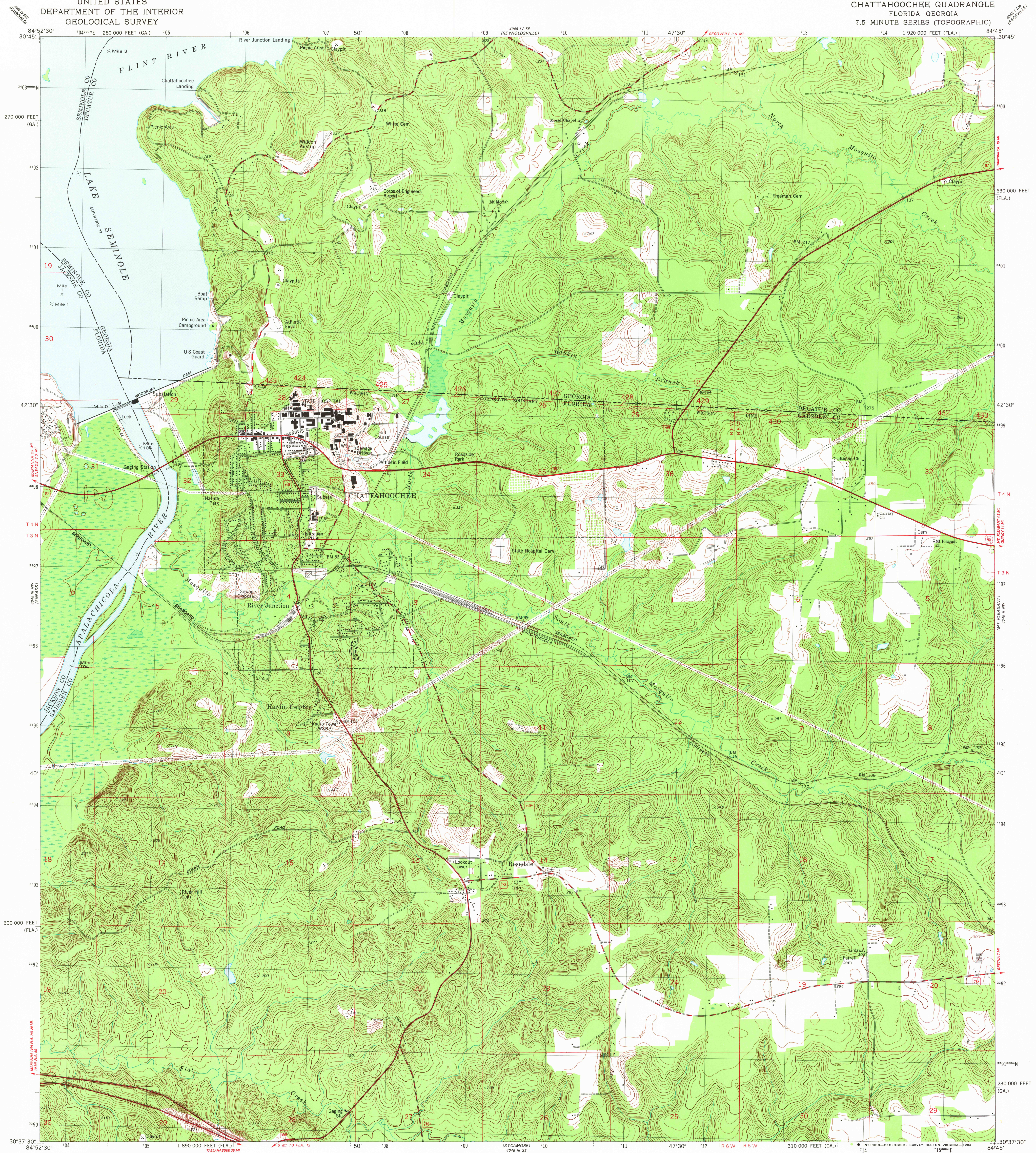
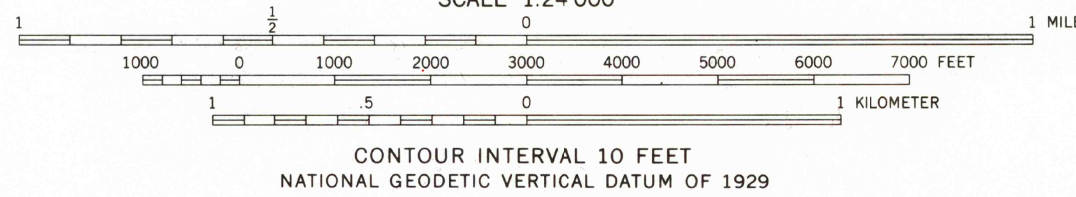
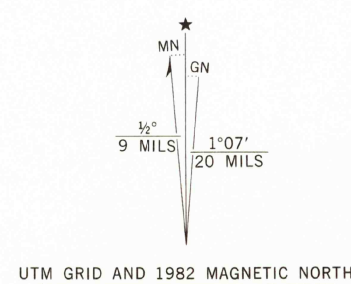


UNITED STATES
DEPARTMENT OF THE INTERIOR
GEOLOGICAL SURVEY

CHATTAHOOCHEE QUADRANGLE
FLORIDA-GEORGIA
7.5 MINUTE SERIES (TOPOGRAPHIC)



Mapped, edited, and published by the Geological Survey
Revised in cooperation with State of Florida agencies
Control by USGS and NOS/NOAA
Culture and drainage in part compiled from aerial photographs
taken 1947. Topography by planetable surveys 1954-1955
Revised from aerial photographs taken January 1976
Field checked 1977. Map edited 1982
Polyconic projection. 10,000-foot grid ticks based
on Florida coordinate system, north zone, and Georgia
coordinate system, west zone
1000-meter Universal Transverse Mercator grid, zone 16
1927 North American Datum
To place on the predicted North American Datum 1983
move the projection lines 18 meters south and
8 meters west as shown by dashed corner ticks



ROAD CLASSIFICATION			
Primary highway, hard surface	Light-duty road, hard improved surface	Interstate Route	U. S. Route
Secondary highway, hard surface	Unimproved road	State Route	County Route

THIS MAP COMPLIES WITH NATIONAL MAP ACCURACY STANDARDS
FOR SALE BY U. S. GEOLOGICAL SURVEY, RESTON, VIRGINIA 22092
A FOLDER DESCRIBING TOPOGRAPHIC MAPS AND SYMBOLS IS AVAILABLE ON REQUEST

CHATTAHOOCHEE, FLA.-GA.
N3037.5-W8445/7.5

1982

DMA 4045 III NE-SERIES V847