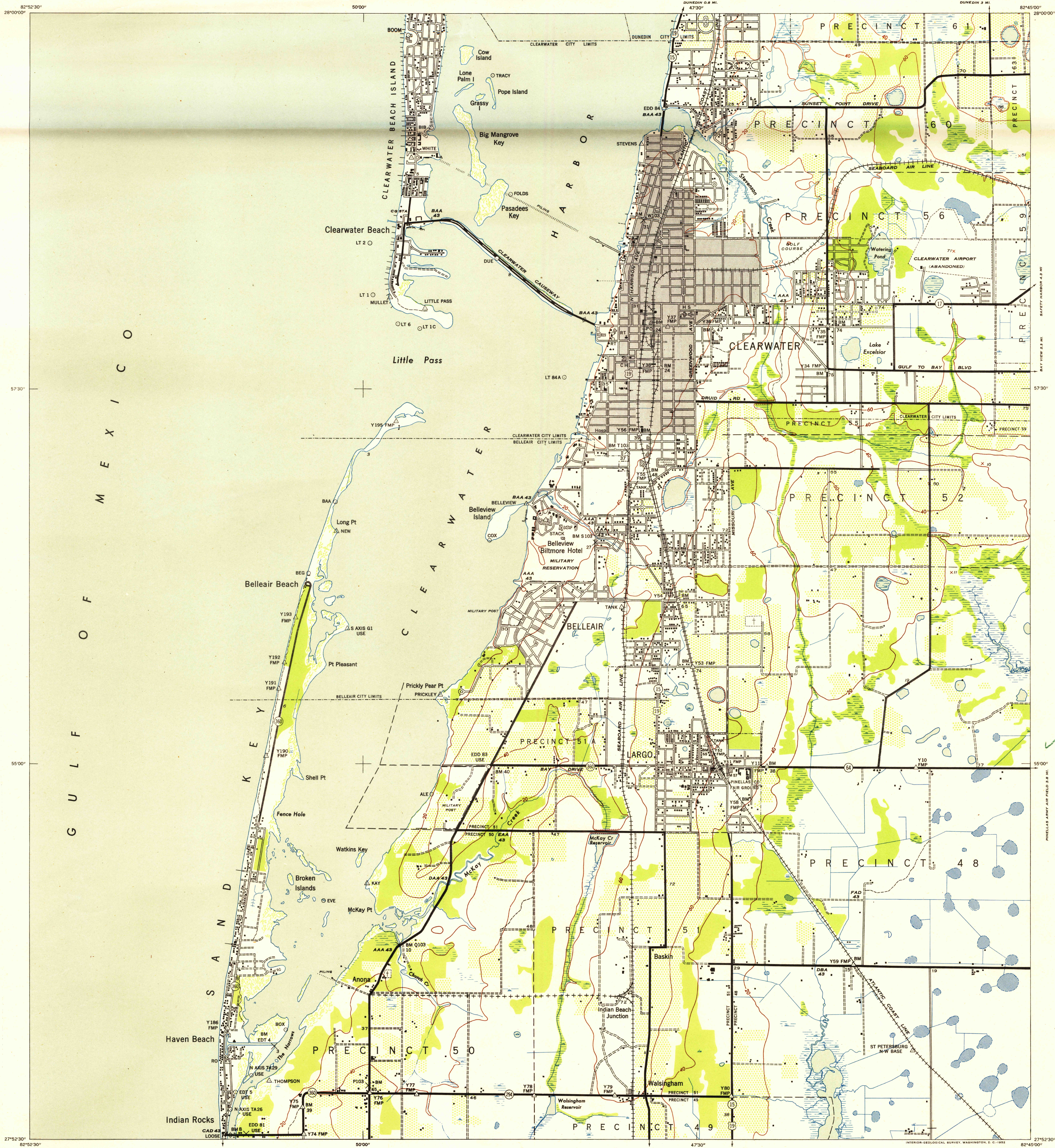


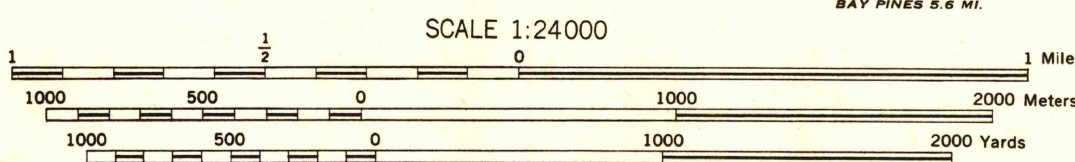
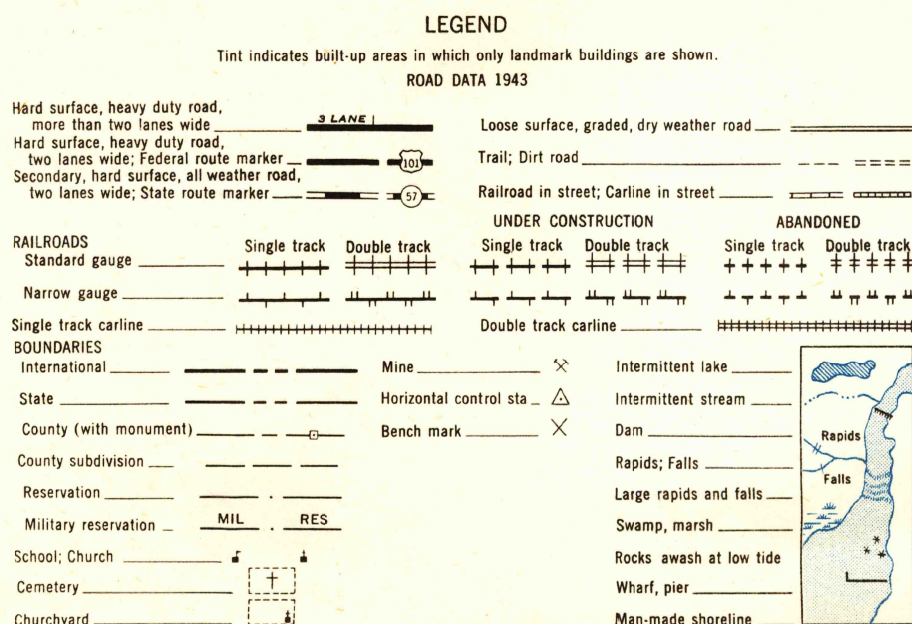
CLEARWATER

SHEET 4439 IV NE  
A.M.S. SERIES V847  
DUNEDIN 3 MI



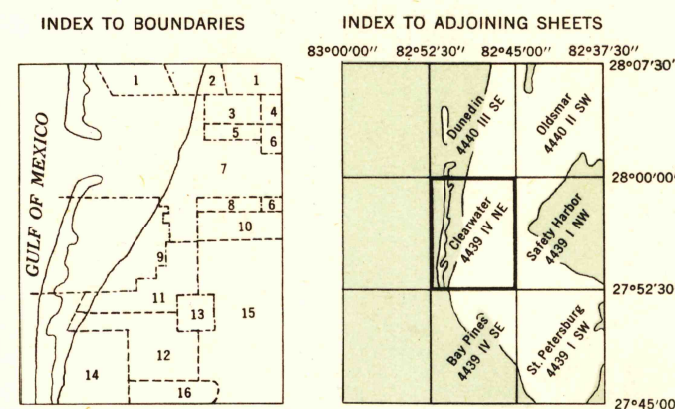
A.M.S. V847  
First Edition (AMS 1), 1943; (AMS 2), 1947.

Prepared under the direction of the Chief of Engineers by the Army Map Service (AM), U. S. Army, Washington, D. C. Scale changed; marginal data revised and Universal Transverse Mercator Grid added, 1947. Copied in 1947 from Florida, 1:31,680, AMS, Clearwater, 1943. Original map compiled by photogrammetric methods and planimetric surveys for the Army Map Service by USC&GS. Horizontal and vertical control by USC&GS. Aerial photography by U. S. Coast and Geodetic Survey. This map complies with the national standard map accuracy requirements.



REPRINTED FROM MILITARY EDITION FOR CIVIL USE 1952  
FOR SALE BY U. S. GEOLOGICAL SURVEY, WASHINGTON 25, D. C.

TRUE NORTH  
MAGNETIC NORTH  
APPROXIMATE MEAN DECLINATION, 1949



FILE COPY  
DEC 3 - 1952  
MAP INFORMATION SERVICE  
GEOLOGICAL

CLEARWATER, FLORIDA  
PINELLAS COUNTY  
N2752.5-W8245.7/5