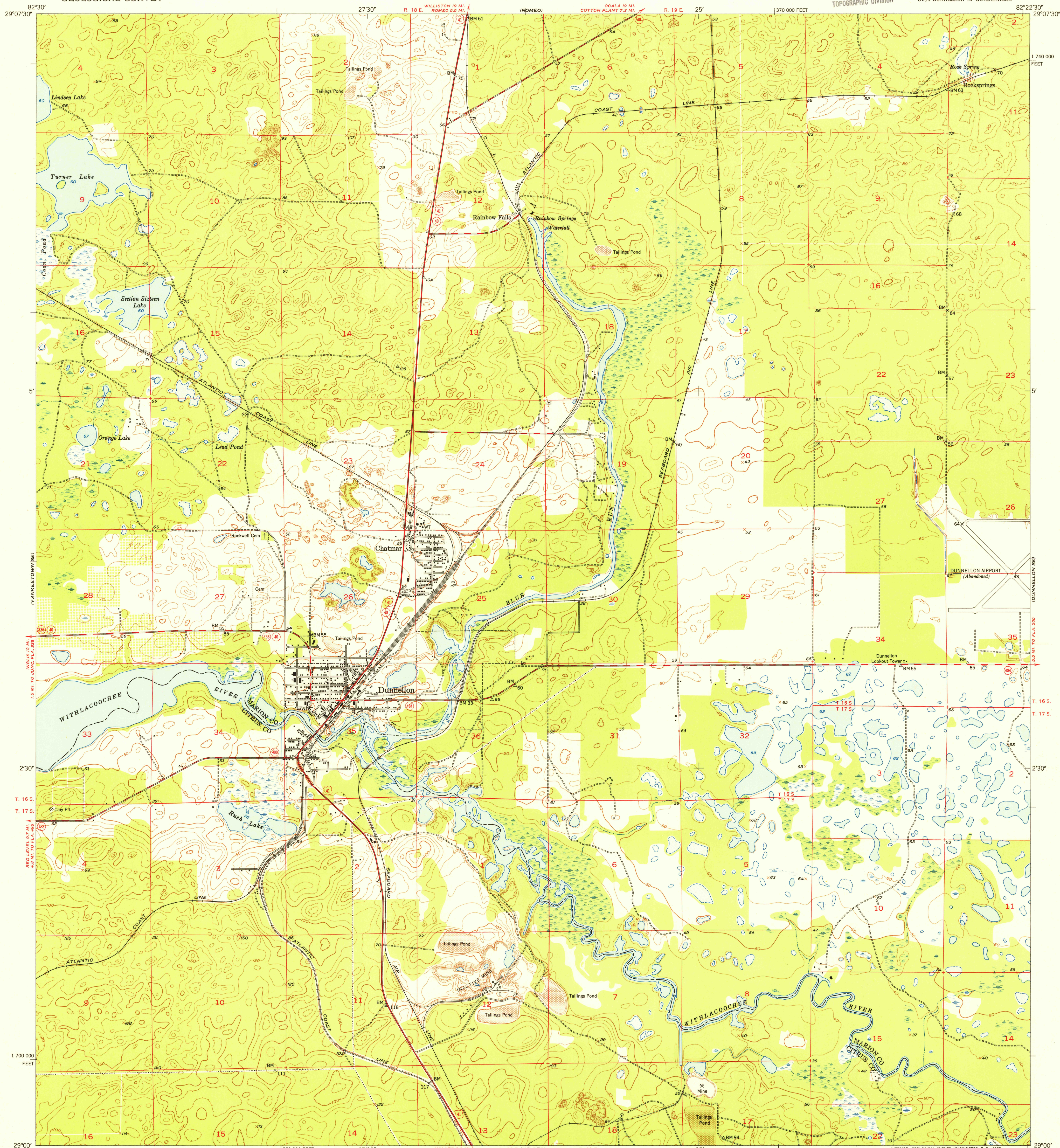


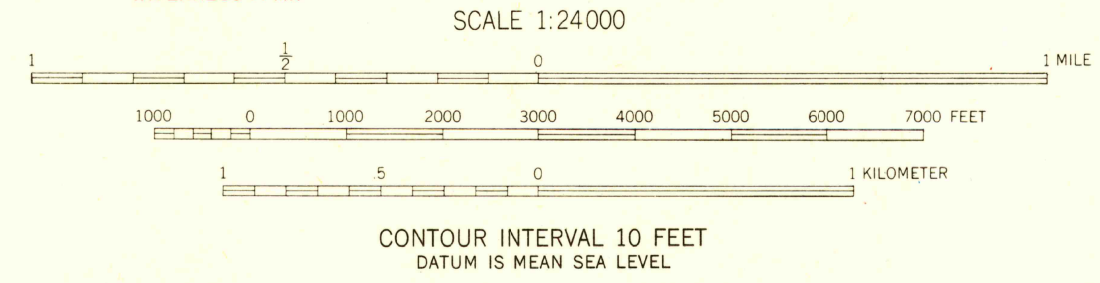
UNITED STATES
DEPARTMENT OF THE INTERIOR
GEOLOGICAL SURVEY

U.S.G.S. DUNNELLON QUADRANGLE
FLORIDA
7.5 MINUTE SERIES (TOPOGRAPHIC)
SW 1/4 DUNNELLON 15' QUADRANGLE

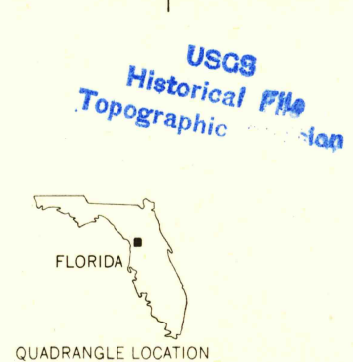


Mapped, edited, and published by the Geological Survey
Control by USGS and USC&GS
Topography from aerial photographs by Kelsh plotter
and by plane-table surveys 1953-1954. Aerial photographs taken 1951
Polyconic projection. 1927 North American datum
10,000-foot grid based on Florida coordinate system
west zone

TRUE NORTH
MAGNETIC NORTH
APPROXIMATE MEAN
DECLINATION, 1954



THIS MAP COMPLIES WITH NATIONAL MAP ACCURACY STANDARDS
FOR SALE BY U. S. GEOLOGICAL SURVEY, WASHINGTON 25, D. C.
A FOLDER DESCRIBING TOPOGRAPHIC MAPS AND SYMBOLS IS AVAILABLE ON REQUEST



ROAD CLASSIFICATION
Heavy-duty 4 LANE 16 LANE Light-duty
Medium-duty 4 LANE 16 LANE Unimproved dirt
U. S. Route State Route

U.S.G.S. FILE COPY
TOPOGRAPHIC DIVISION
DUNNELLON, FLA.
SW 1/4 DUNNELLON 15' QUADRANGLE
N2900-W8222.5/7.5
1954