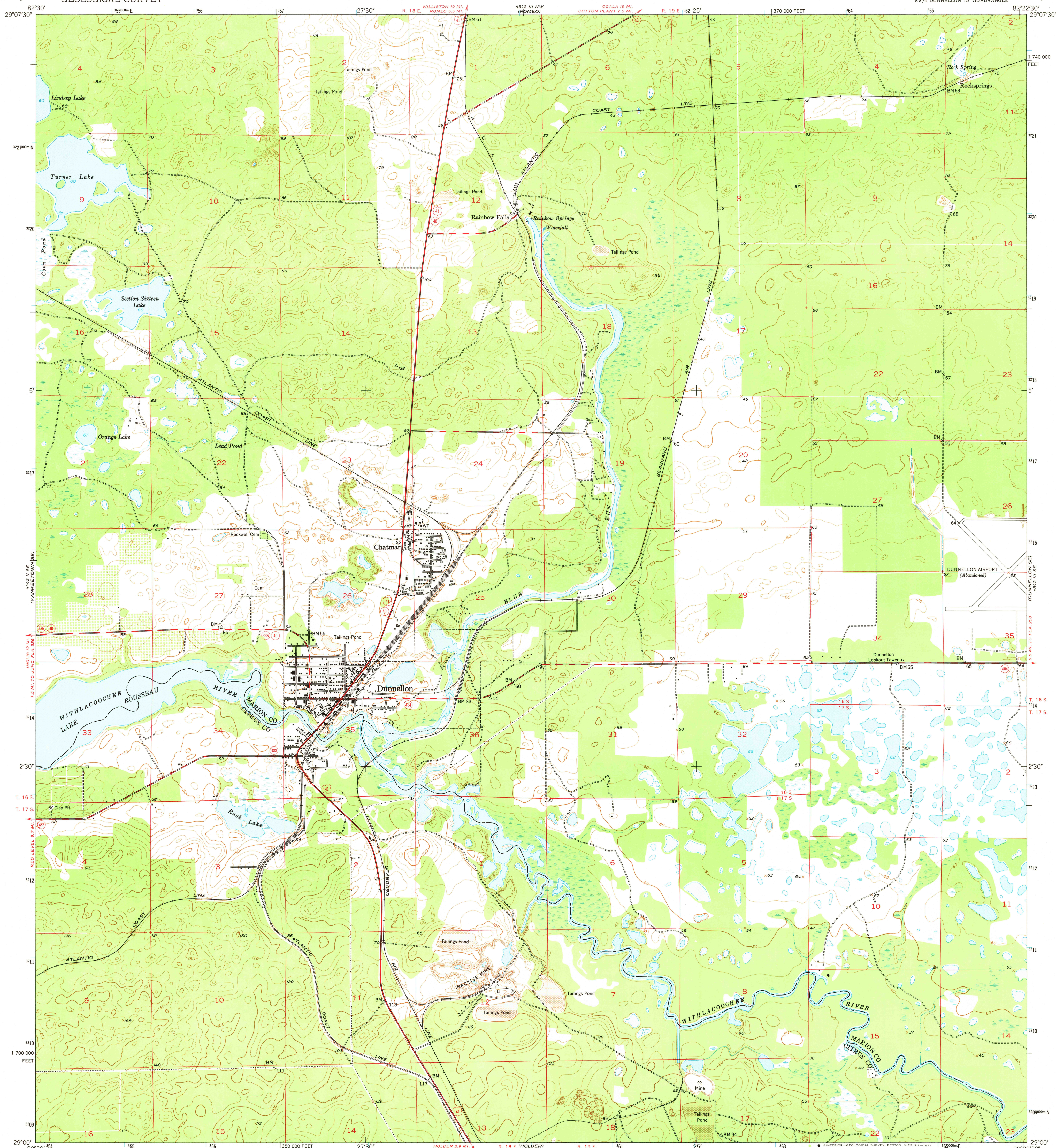
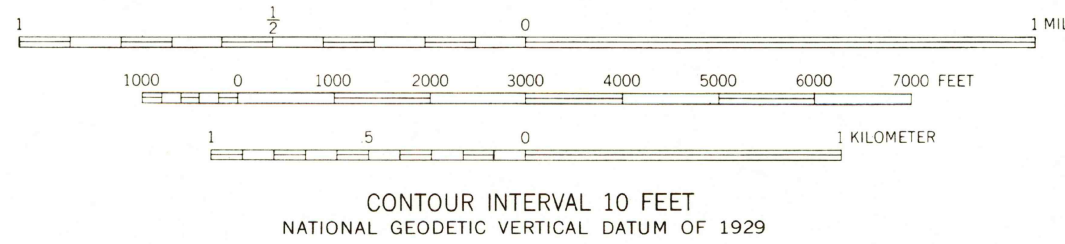
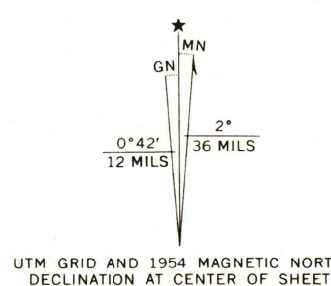


UNITED STATES
DEPARTMENT OF THE INTERIOR
GEOLOGICAL SURVEY

DUNNELTON QUADRANGLE
FLORIDA
7.5 MINUTE SERIES (TOPOGRAPHIC)
SW/4 DUNNELTON 15' QUADRANGLE



Mapped, edited, and published by the Geological Survey
Control by USGS and USC&GS
Topography from aerial photographs by Kelsh plotter
and by plane-table surveys 1953-1954. Aerial photographs taken 1951
Polyconic projection. 1927 North American datum
10,000-foot grid based on Florida coordinate system
west zone
1000-meter Universal Transverse Mercator grid ticks,
zone 17, shown in blue



ROAD CLASSIFICATION
Heavy-duty 1964
Medium-duty 1964
Light-duty 1964
Unimproved dirt 1964
U.S. Route
State Route
DUNNELTON, FLA.
SW/4 DUNNELTON 15' QUADRANGLE
N2900-W8222.5/7.5
1954
MAR 12 1975
3345-17
150-17

THIS MAP COMPLIES WITH NATIONAL MAP ACCURACY STANDARDS
FOR SALE BY U. S. GEOLOGICAL SURVEY, RESTON, VIRGINIA 22092
A FOLDER DESCRIBING TOPOGRAPHIC MAPS AND SYMBOLS IS AVAILABLE ON REQUEST

AMS 4542 III SW-SERIES V847