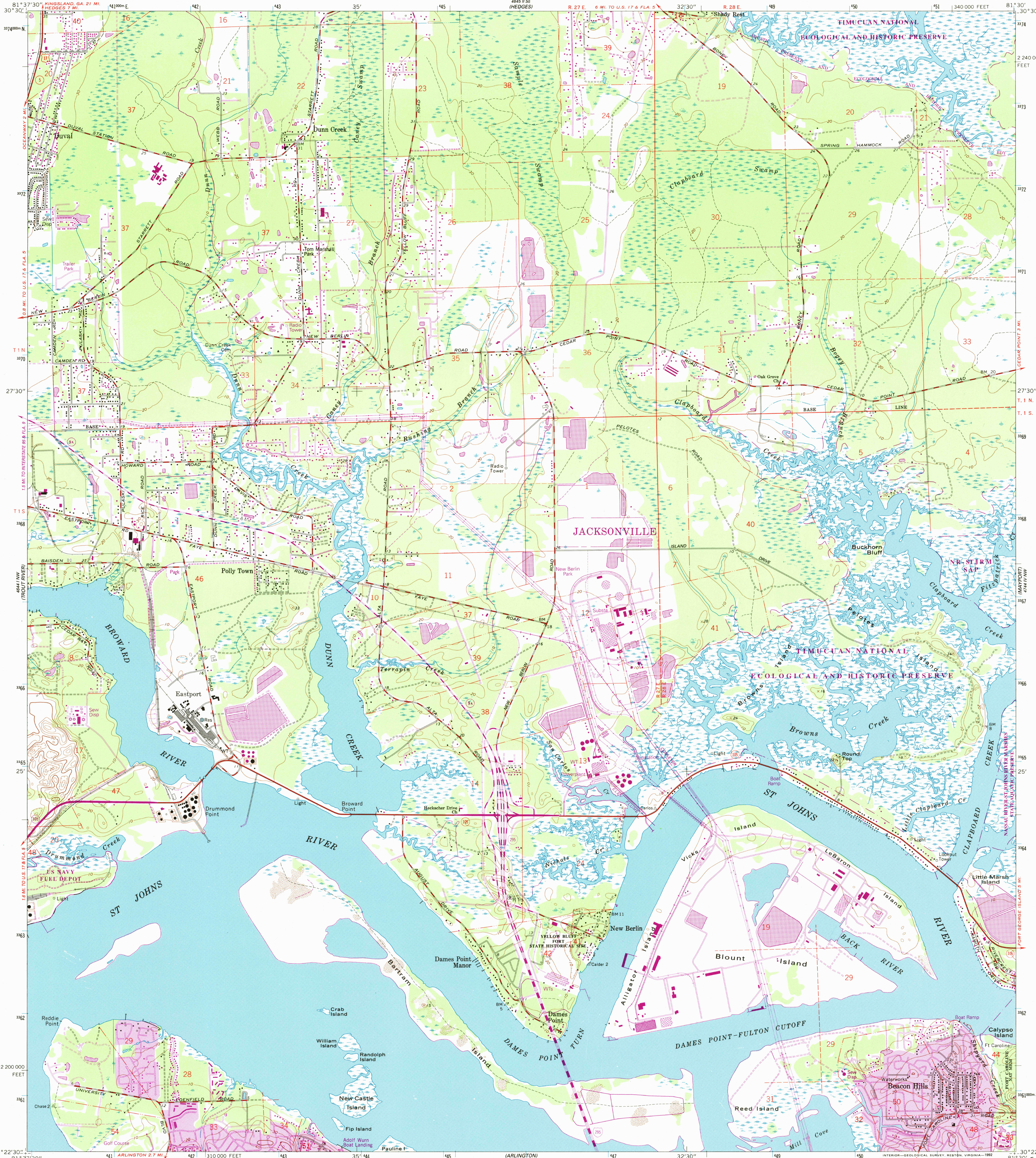
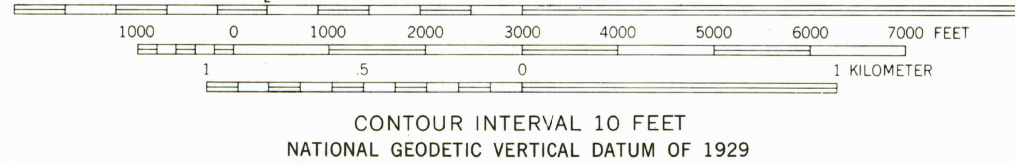
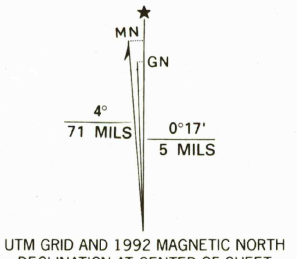


UNITED STATES
DEPARTMENT OF THE INTERIOR
GEOLOGICAL SURVEY

EASTPORT QUADRANGLE
FLORIDA—DUVAL CO.
7.5 MINUTE SERIES (TOPOGRAPHIC)



Produced by the United States Geological Survey
Control by USGS and NOS/NOAA
Topography by planetable surveys 1948. Revised by
photogrammetric methods from aerial photographs taken 1963
Field checked 1964
Projection and 10,000-foot grid ticks: Florida coordinate
system, east zone (transverse Mercator)
1000-meter Universal Transverse Mercator grid ticks, zone 17, shown in blue
1927 North American Datum (NAD 27)
North American Datum of 1983 (NAD 83) is shown by dashed corner ticks
The values of the shift between NAD 27 and NAD 83 for 7.5-minute
intersections are given in USGS Bulletin 1875
Red tint indicates areas in which only landmark buildings are shown
Fine red dashed lines indicate selected fence and field lines where
generally visible on aerial photographs. This information is unchecked



THIS MAP COMPLIES WITH NATIONAL MAP ACCURACY STANDARDS
FOR SALE BY U.S. GEOLOGICAL SURVEY
DENVER, COLORADO 80225, OR RESTON, VIRGINIA 22092
A FOLDER DESCRIBING TOPOGRAPHIC MAPS AND SYMBOLS IS AVAILABLE ON REQUEST

Revisions shown in purple and woodland compiled in
cooperation with State of Florida agencies from
aerial photographs taken 1989 and other sources
Contours not revised. This information not field checked
Map edited 1992
Purple tint indicates extension of urban areas

ROAD CLASSIFICATION

Primary highway, hard surface	Light-duty road, hard or improved surface
Secondary highway, hard surface	Unimproved road

Interstate Route U.S. Route State Route

QUADRANGLE LOCATION

FLORIDA

EASTPORT, FLA.

30081-05-TF-024

1964
REVISED 1992
DMA 4644 1 NE—SERIES Y847

USGS HISTORICAL
MAP ARCHIVES
MAY 31 1998
REC'D FILE COPY

