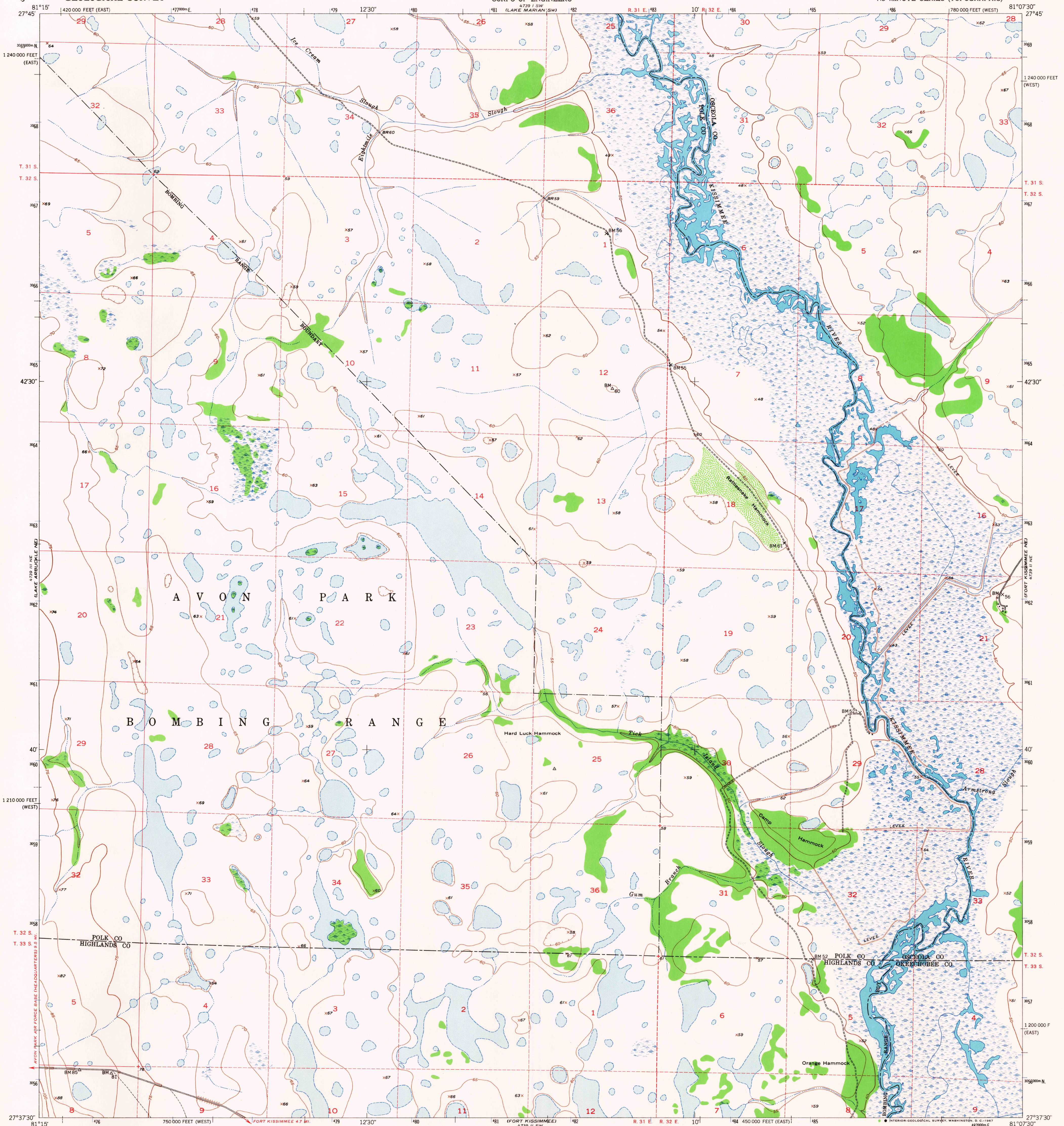


UNITED STATES  
DEPARTMENT OF THE INTERIOR  
GEOLOGICAL SURVEY

UNITED STATES  
DEPARTMENT OF THE ARMY  
CORPS OF ENGINEERS

FORT KISSIMMEE NW QUADRANGLE  
FLORIDA  
7.5 MINUTE SERIES (TOPOGRAPHIC)



Mapped by U. S. Corps of Engineers  
Edited and published by the Geological Survey

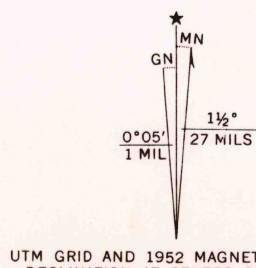
Control by USCGS and USCE

Culture and drainage in part compiled from aerial photographs  
taken 1950. Topography by plane-table surveys 1950-1951  
Field check by the Geological Survey 1952

Polyconic projection. 1927 North American datum  
10,000-foot grids based on Florida coordinate system,  
east and west zones

Dashed land lines indicate approximate locations  
Certain land lines are omitted in T. 31 S.-R. 31 E. and  
T. 32 S.-R. 32 E. because of insufficient data

1000-meter Universal Transverse Mercator grid ticks,  
zone 17, shown in blue



THIS MAP COMPLIES WITH NATIONAL MAP ACCURACY STANDARDS  
FOR SALE BY U. S. GEOLOGICAL SURVEY, WASHINGTON, D. C. 20242  
A FOLDER DESCRIBING TOPOGRAPHIC MAPS AND SYMBOLS IS AVAILABLE ON REQUEST



QUADRANGLE LOCATION

U.S.G.S.

FOR SALE COPY  
TOPOGRAPHIC DIVISION

FORT KISSIMMEE NW, FLA.  
N2737.5-W8107.5/7.5

1952

AMS 4739 II NW-SERIES V847

2125  
MAR 9 1957