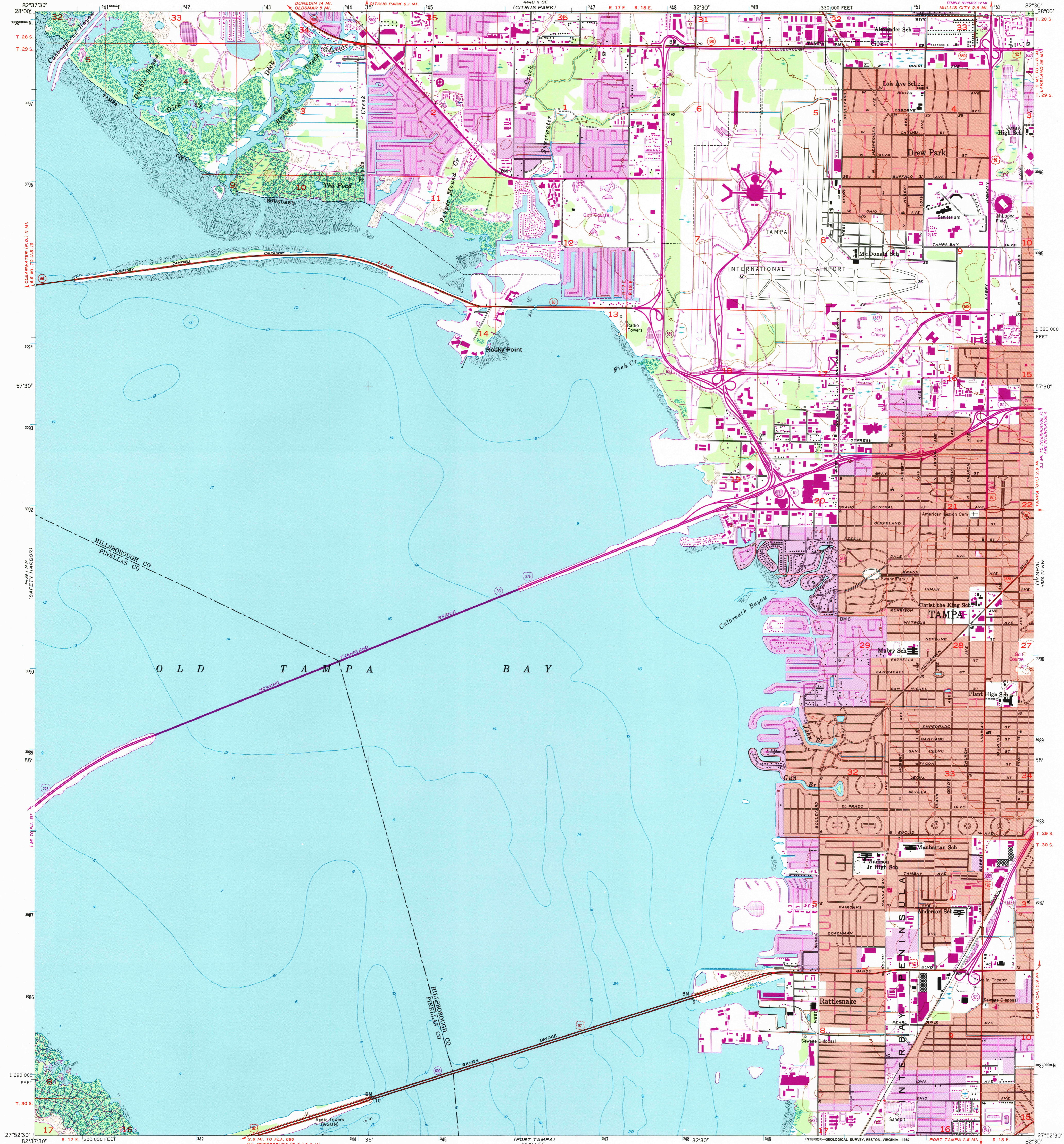


UNITED STATES  
DEPARTMENT OF THE INTERIOR  
GEOLOGICAL SURVEY

GANDY BRIDGE QUADRANGLE  
FLORIDA  
7.5 MINUTE SERIES (TOPOGRAPHIC)



Mapped, edited, and published by the Geological Survey  
Control by USGS and NOS/NOAA

Culture and drainage in part compiled from aerial photographs  
taken 1955. Topography by planetable surveys 1956  
Mapped 1943, remapped 1956

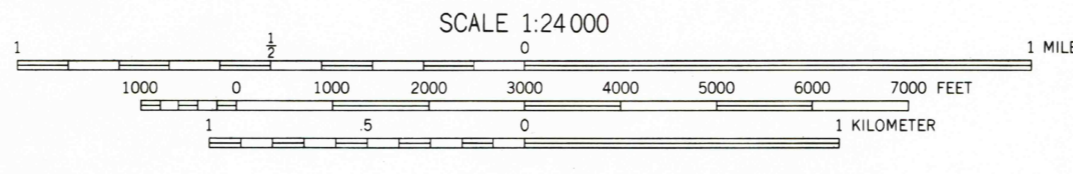
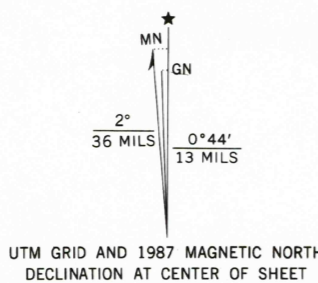
Selected hydrographic data compiled from NOS chart 587 (1952)  
This information is not intended for navigational purposes

Polyconic projection. 10,000-foot grid based on Florida  
coordinate system, west zone. 1000-meter Universal Transverse  
Mercator grid ticks, zone 17, shown in blue. 1927 North  
American Datum. To place on the predicted North American  
Datum 1983 move the projection lines 29 meters south and  
17 meters west as shown by dashed corner ticks

Red tint indicates areas in which only landmark buildings are shown

Revisions shown in purple and woodland compiled in cooperation  
with State of Florida agencies from aerial photographs taken  
1984 and other sources. This information not field checked  
Map edited 1987

Purple tint indicates extension of urban areas

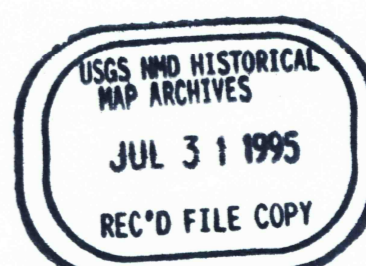


CONTOUR INTERVAL 5 FEET  
NATIONAL GEODETIC VERTICAL DATUM OF 1929  
DEPTH CURVES AND SOUNDINGS IN FEET—DATUM IS MEAN LOWER LOW WATER  
THE RELATIONSHIP BETWEEN THE TWO DATUMS IS VARIABLE  
SHORELINE SHOWN REPRESENTS THE APPROXIMATE LINE OF MEAN HIGH WATER  
THE MEAN RANGE OF TIDE IS APPROXIMATELY 2 FEET

THIS MAP COMPLIES WITH NATIONAL MAP ACCURACY STANDARDS  
FOR SALE BY U.S. GEOLOGICAL SURVEY  
DENVER, COLORADO 80225 OR RESTON, VIRGINIA 22092  
A FOLDER DESCRIBING TOPOGRAPHIC MAPS AND SYMBOLS IS AVAILABLE ON REQUEST



ROAD CLASSIFICATION  
Heavy-duty ——— Light-duty ———  
Medium-duty ——— Unimproved dirt ———  
U.S. Route ——— State Route ———  
Interstate Route ———



GANDY BRIDGE, FLA.  
27082-H5-TF-024

1956  
PHOTOREVISED 1987  
DMA 4439 1 NE—SERIES V847

