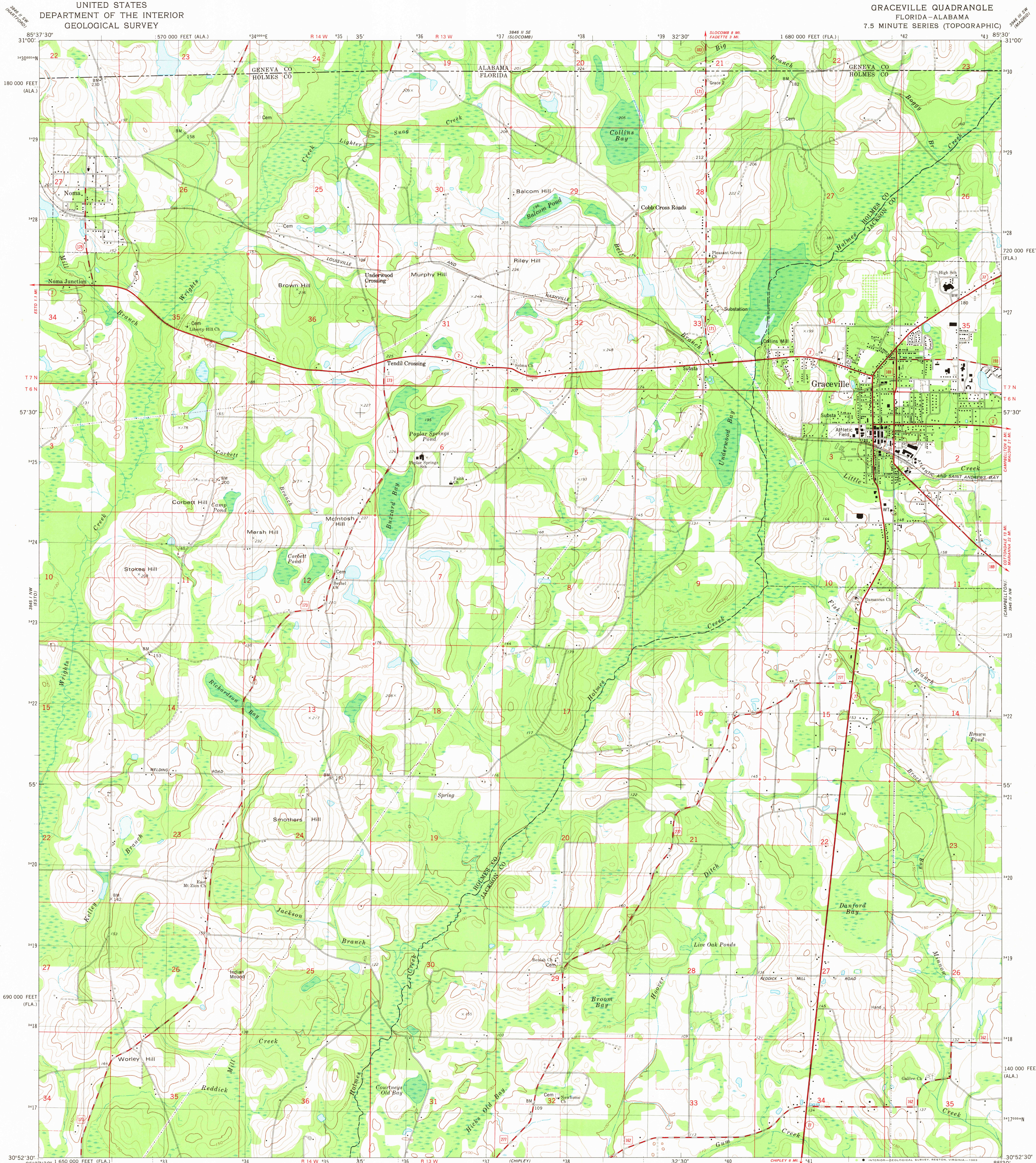
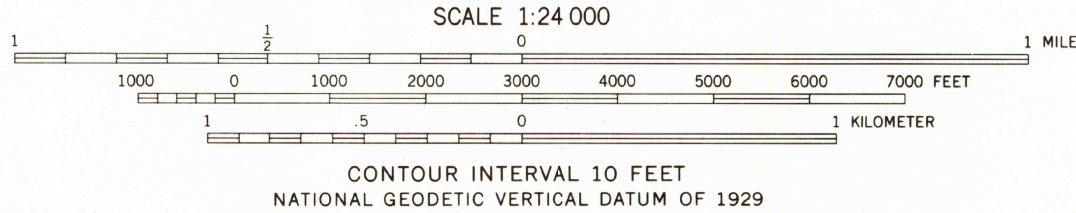
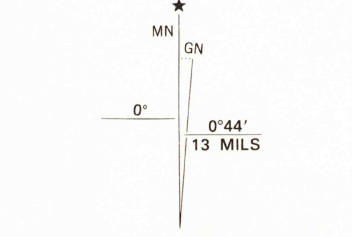


UNITED STATES  
DEPARTMENT OF THE INTERIOR  
GEOLOGICAL SURVEY

GRACEVILLE QUADRANGLE  
FLORIDA-ALABAMA  
7.5 MINUTE SERIES (TOPOGRAPHIC)



Mapped, edited, and published by the Geological Survey  
in cooperation with the U. S. Corps of Engineers  
Revised in cooperation with State of Florida agencies  
Control by USGS and NOS/NOAA  
Culture and drainage in part compiled from aerial photographs  
taken 1947. Topography by planetable surveys 1950  
Revised from aerial photographs taken January 1976  
Field checked 1978. Map edited 1982  
Polyconic projection. 10,000-foot grid ticks based  
on Florida coordinate system, north zone and  
Alabama coordinate system, east zone  
1000-meter Universal Transverse Mercator grid, zone 16  
1927 North American Datum  
To place on the predicted North American Datum 1983  
move the projection lines 16 meters south and  
7 meters west as shown by dashed corner ticks  
Fine red dashed lines indicate selected fence and field lines where  
generally visible on aerial photographs. This information is unchecked



ROAD CLASSIFICATION	
Primary highway, hard surface	Light-duty road, hard or improved surface
Secondary highway, hard surface	Unimproved road
Interstate Route	U. S. Route
	State Route
	County Route

THIS MAP COMPLIES WITH NATIONAL MAP ACCURACY STANDARDS  
FOR SALE BY U. S. GEOLOGICAL SURVEY, RESTON, VIRGINIA 22092  
A FOLDER DESCRIBING TOPOGRAPHIC MAPS AND SYMBOLS IS AVAILABLE ON REQUEST

SEP 1  
GRACEVILLE, FLA.-ALA.  
N3052.5-W8530.7.5

1982

DMA 3845 I NE-SERIES V847