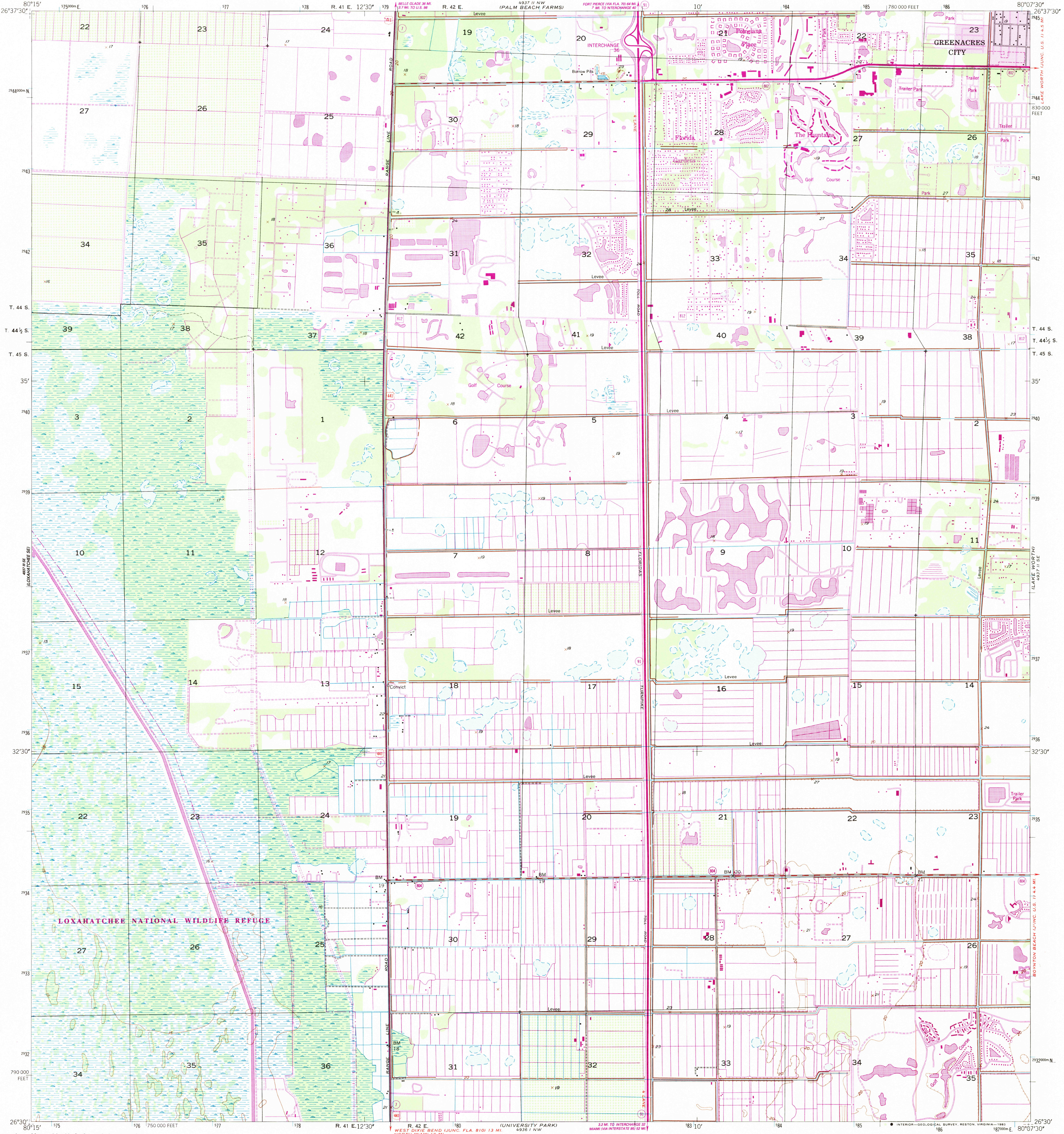


UNITED STATES
DEPARTMENT OF THE INTERIOR
GEOLOGICAL SURVEY

GREENACRES CITY QUADRANGLE
FLORIDA-PALM BEACH CO
7.5 MINUTE SERIES (TOPOGRAPHIC)



Mapped by U. S. Coast & Geodetic Survey
Edited and published by the Geological Survey
Control by NOS/NOAA

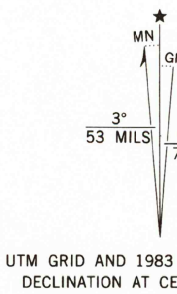
Planimetry in part by photogrammetric methods from aerial
photographs taken 1942. Topography by planetable surveys 1945
Field checked 1945

Polyconic projection. 10,000-foot grid ticks based on Florida
coordinate system, east zone. 1000-meter Universal Transverse
Mercator grid ticks, zone 17, shown in blue. 1927 North
American Datum. To place on the predicted North American
Datum 1983 move the projection lines 36 meters south
and 23 meters west as shown by dashed corner ticks

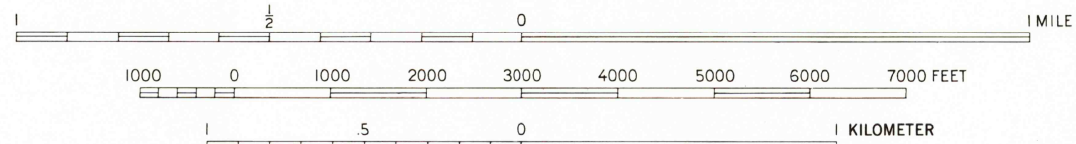
No distinction is made between dwellings, barns,
commercial and industrial buildings

There may be private inholdings within the boundaries of
the National or State reservations shown on this map

Revisions shown in purple and woodland compiled by the
Geological Survey in cooperation with State of Florida agencies
from aerial photographs taken 1980 and other sources.
This information not field checked. Map edited 1983
Purple tint indicates extension of urban areas



SCALE 1:24,000



CONTOUR INTERVAL 5 FEET
NATIONAL GEODETIC VERTICAL DATUM OF 1929

THIS MAP COMPLIES WITH NATIONAL MAP ACCURACY STANDARDS
FOR SALE BY U. S. GEOLOGICAL SURVEY, RESTON, VIRGINIA 22092
A FOLDER DESCRIBING TOPOGRAPHIC MAPS AND SYMBOLS IS AVAILABLE ON REQUEST



ROAD CLASSIFICATION
Primary highway, hard surface
Secondary highway, hard surface
Interstate Route
U. S. Route
State Route
County Route
Light-duty road, hard or improved surface
Unimproved road
Interior-Geological Survey, Reston, Virginia-1983

GREENACRES CITY, FLA.
26080-E2-TF-024
1945
PHOTOREVISED 1983
DMA 4937 II SW-SERIES V847

APR 2 1984