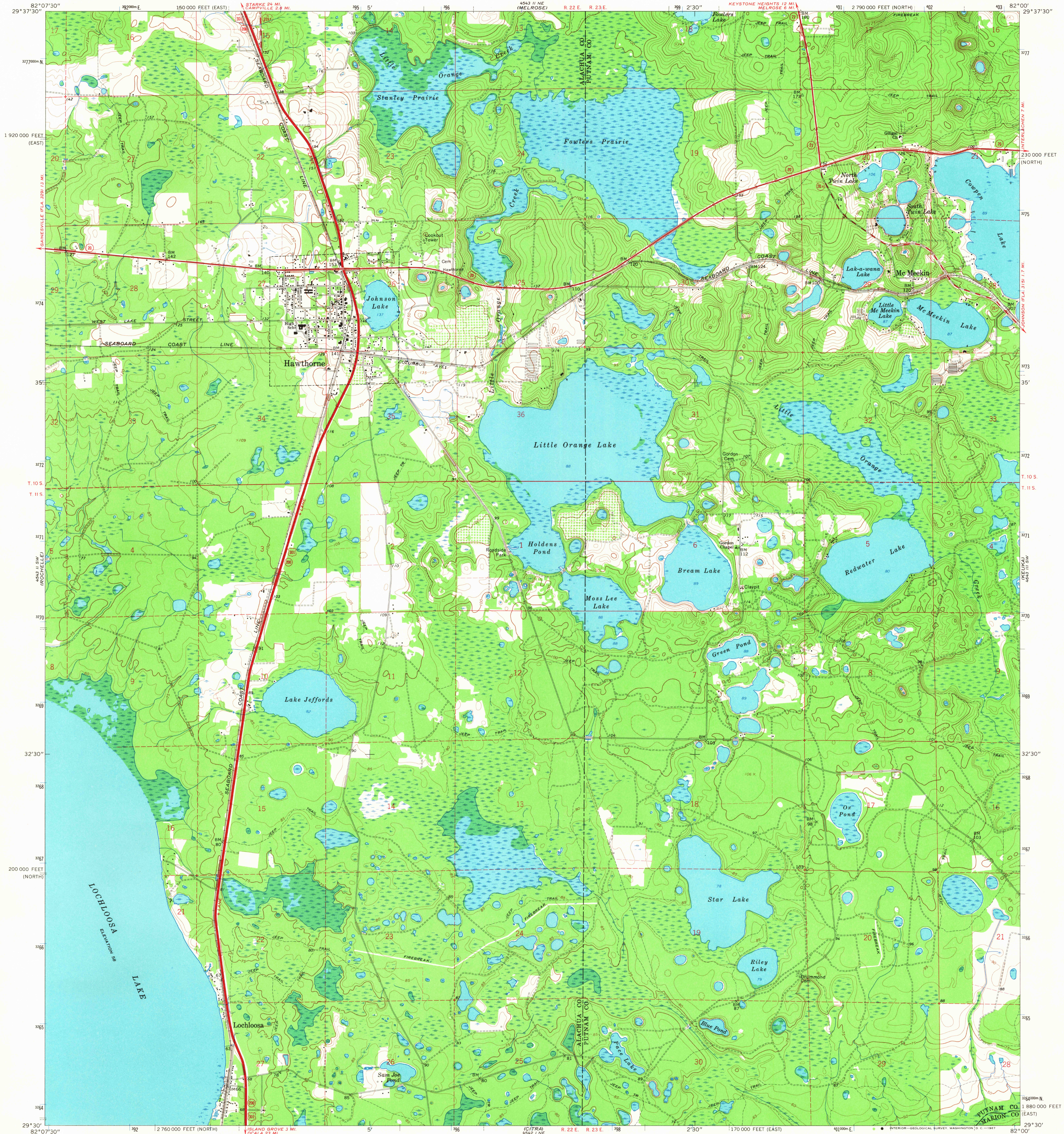
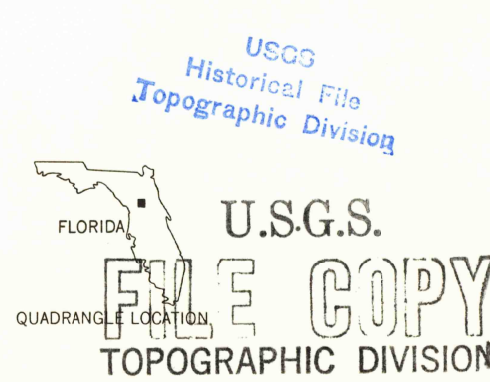
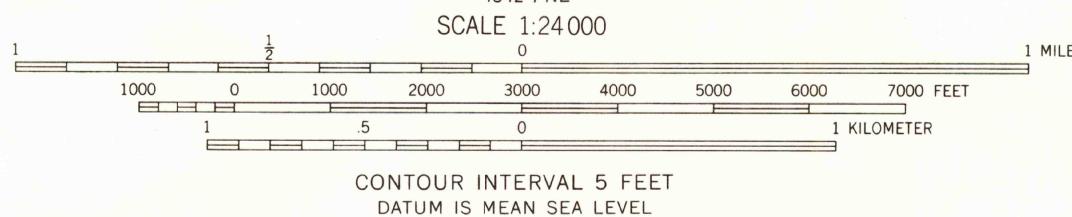
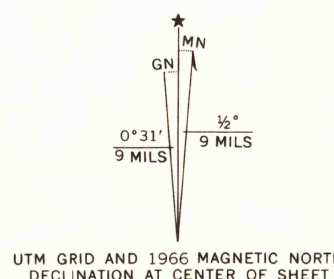


UNITED STATES
DEPARTMENT OF THE INTERIOR
GEOLOGICAL SURVEY

HAWTHORNE QUADRANGLE
FLORIDA
7.5 MINUTE SERIES (TOPOGRAPHIC)
SE/4 HAWTHORNE 15' QUADRANGLE



Mapped, edited, and published by the Geological Survey
Control by USGS, USC&GS, and Florida Geodetic Survey
Topography by photogrammetric methods from aerial
photographs taken 1964. Field checked 1966
Polyconic projection. 1927 North American datum.
10,000-foot grids based on Florida coordinate system,
north and east zones
1000-meter Universal Transverse Mercator grid ticks,
zone 17, shown in blue
Fine red dashed lines indicate selected fence and field lines where
generally visible on aerial photographs. This information is unchecked



ROAD CLASSIFICATION	
Heavy-duty	Light-duty
Medium-duty	Unimproved dirt
U.S. Route	State Route

THIS MAP COMPLIES WITH NATIONAL MAP ACCURACY STANDARDS
FOR SALE BY U.S. GEOLOGICAL SURVEY, WASHINGTON, D.C. 20242
A FOLDER DESCRIBING TOPOGRAPHIC MAPS AND SYMBOLS IS AVAILABLE ON REQUEST

HAWTHORNE, FLA.
SE/4 HAWTHORNE 15' QUADRANGLE
N2930-W8200/7.5

1966
AMS 4543 II SE—SERIES V847

3225
NOV 15 1967