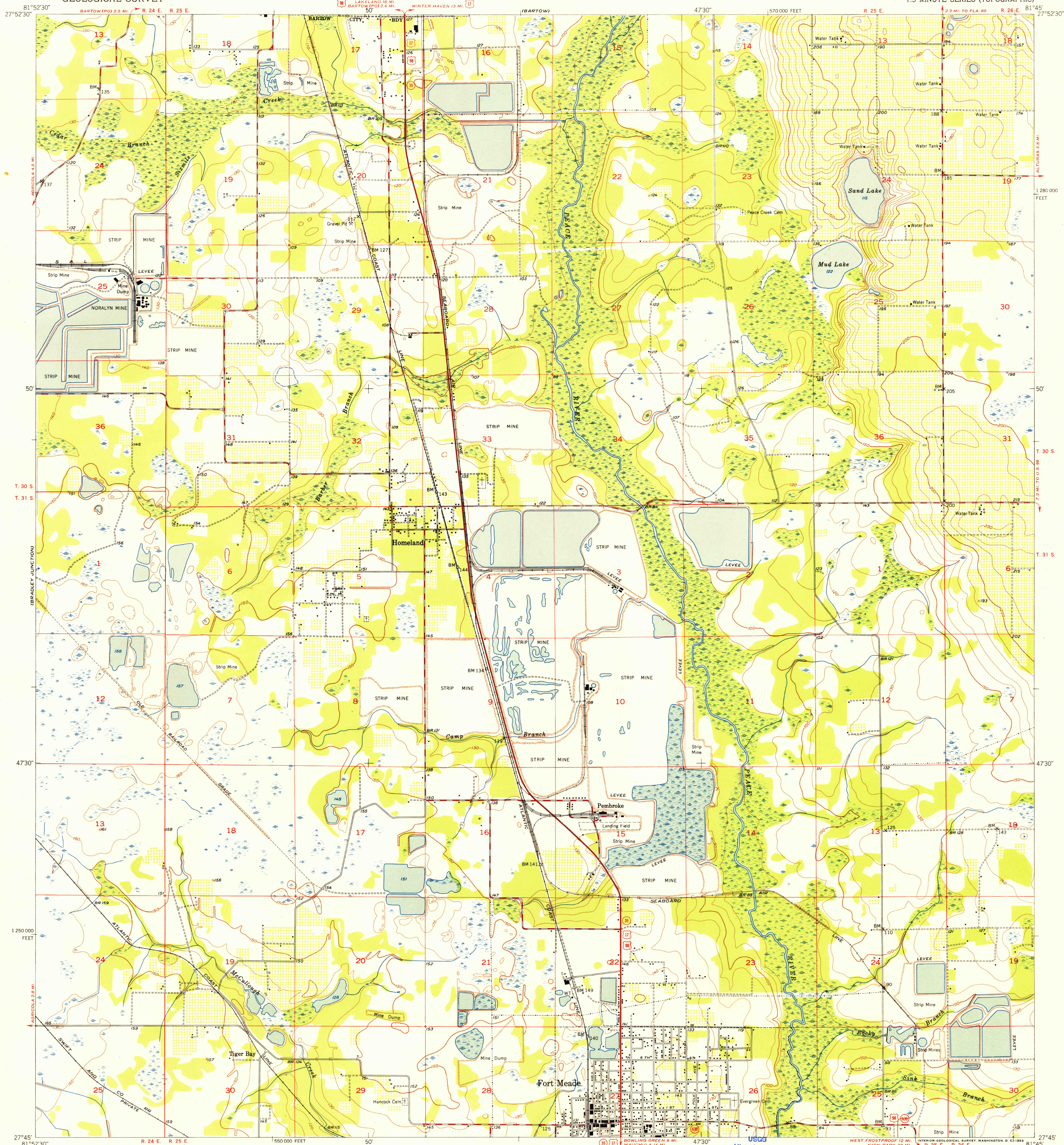


(MILBERRY)

UNITED STATES
DEPARTMENT OF THE INTERIOR
GEOLOGICAL SURVEY

HOMELAND QUADRANGLE
FLORIDA-POLK CO.
7.5 MINUTE SERIES (TOPOGRAPHIC)



Mapped, edited, and published by the Geological Survey

Control by USGS, USC&GS, and Florida Geodetic Survey

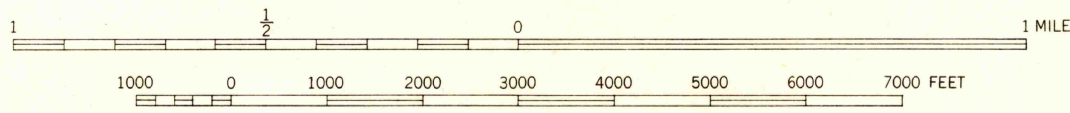
Culture and drainage in part compiled from aerial photographs
taken 1941 and 1947. Topography by plane-table surveys 1951-1952

Polyconic projection. 1927 North American datum
10,000-foot grid based on Florida coordinate system,
west zone

TRUE NORTH
MAGNETIC NORTH

APPROXIMATE MEAN
DECLINATION, 1952

SCALE 1:24,000



CONTOUR INTERVAL 10 FEET
DATUM IS MEAN SEA LEVEL

THIS MAP COMPLIES WITH NATIONAL MAP ACCURACY STANDARDS
FOR SALE BY U. S. GEOLOGICAL SURVEY, WASHINGTON 25, D. C.
A FOLDER DESCRIBING TOPOGRAPHIC MAPS AND SYMBOLS IS AVAILABLE ON REQUEST

USGS
Historical File
Topographic Division



QUADRANGLE LOCATION

ROAD CLASSIFICATION
Heavy-duty 4 LANE 6 LANE Light-duty
Medium-duty 4 LANE 6 LANE Unimproved dirt
U. S. Route State Route

HOMELAND, FLA.
N2745-W8145/7.5

1952

MAR 24 1953