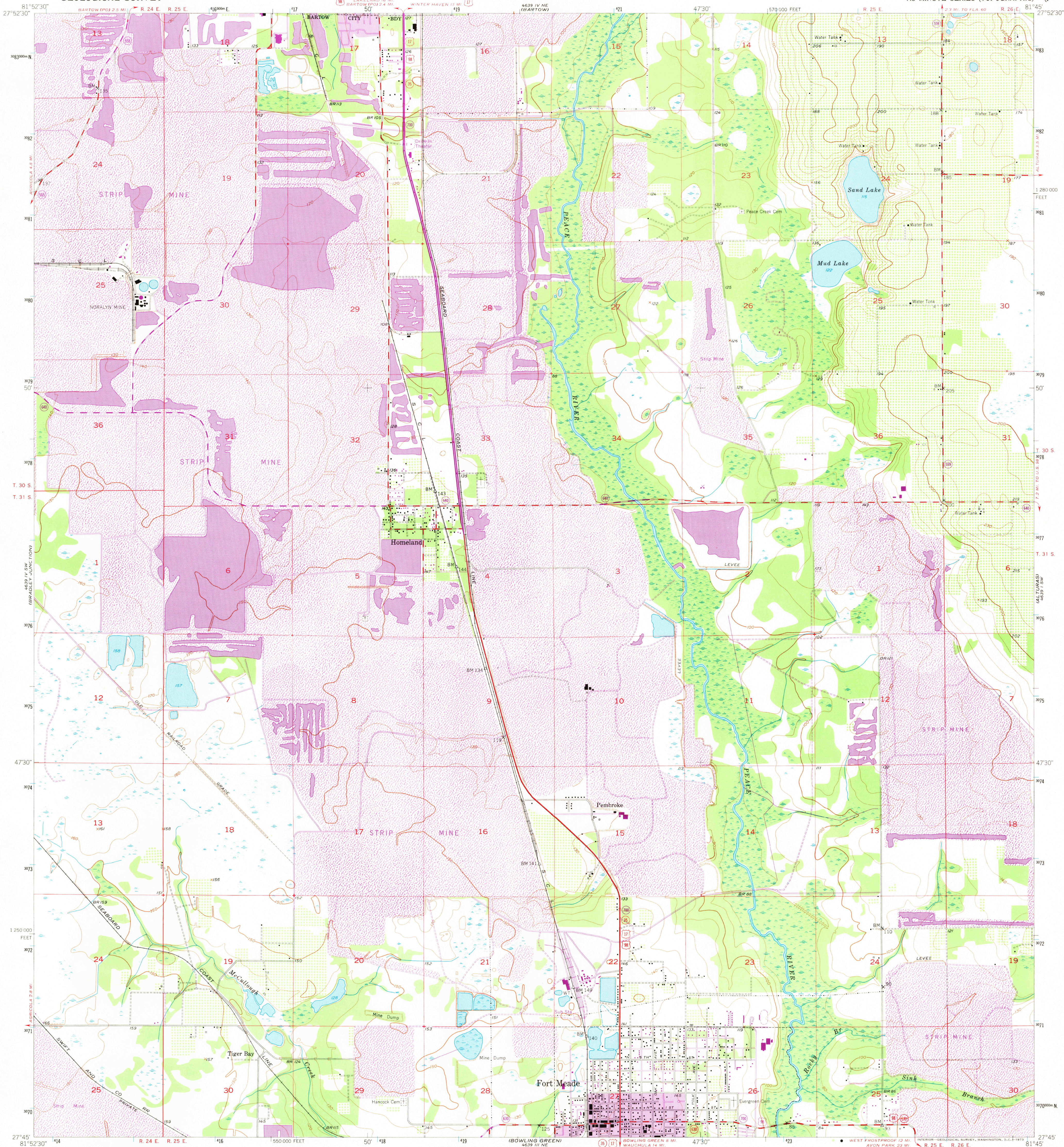


4639 IV NW
(POLK COUNTY)

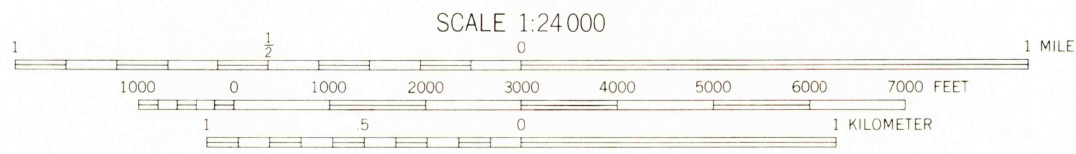
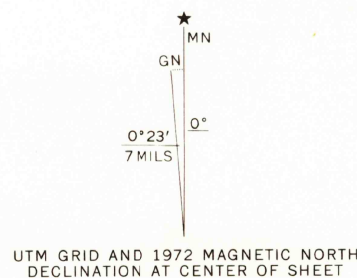
UNITED STATES
DEPARTMENT OF THE INTERIOR
GEOLOGICAL SURVEY

HOMELAND QUADRANGLE
FLORIDA-POLK CO.
7.5 MINUTE SERIES (TOPOGRAPHIC)

4639 IV NW
(CLOSE)



Mapped, edited, and published by the Geological Survey
Control by USGS, USC&GS, and Florida Geodetic Survey
Culture and drainage in part compiled from aerial photographs
taken 1941 and 1947. Topography by plane-table surveys 1951-1952
Polyconic projection. 1927 North American datum
10,000-foot grid based on Florida coordinate system,
west zone
1000-meter Universal Transverse Mercator grid ticks,
zone 17, shown in blue
Revisions shown in purple compiled from aerial photographs
taken 1972. This information not field checked
Purple tint indicates extension of urban areas



ROAD CLASSIFICATION
Heavy-duty ——— 4 LANE 16 LANE Light-duty ———
Medium-duty ——— 4 LANE 16 LANE Unimproved dirt ———
U. S. Route ——— State Route ———

NOV 13 1973
HOMELAND, FLA.
N2745-W8145/7.5

USGS
Historical File
Topographic Division

1952
PHOTOGRAPHED 1972
AMS 4639 IV SE-SERIES V847

THIS MAP COMPLIES WITH NATIONAL MAP ACCURACY STANDARDS
FOR SALE BY U. S. GEOLOGICAL SURVEY, WASHINGTON, D. C. 20242
A FOLDER DESCRIBING TOPOGRAPHIC MAPS AND SYMBOLS IS AVAILABLE ON REQUEST