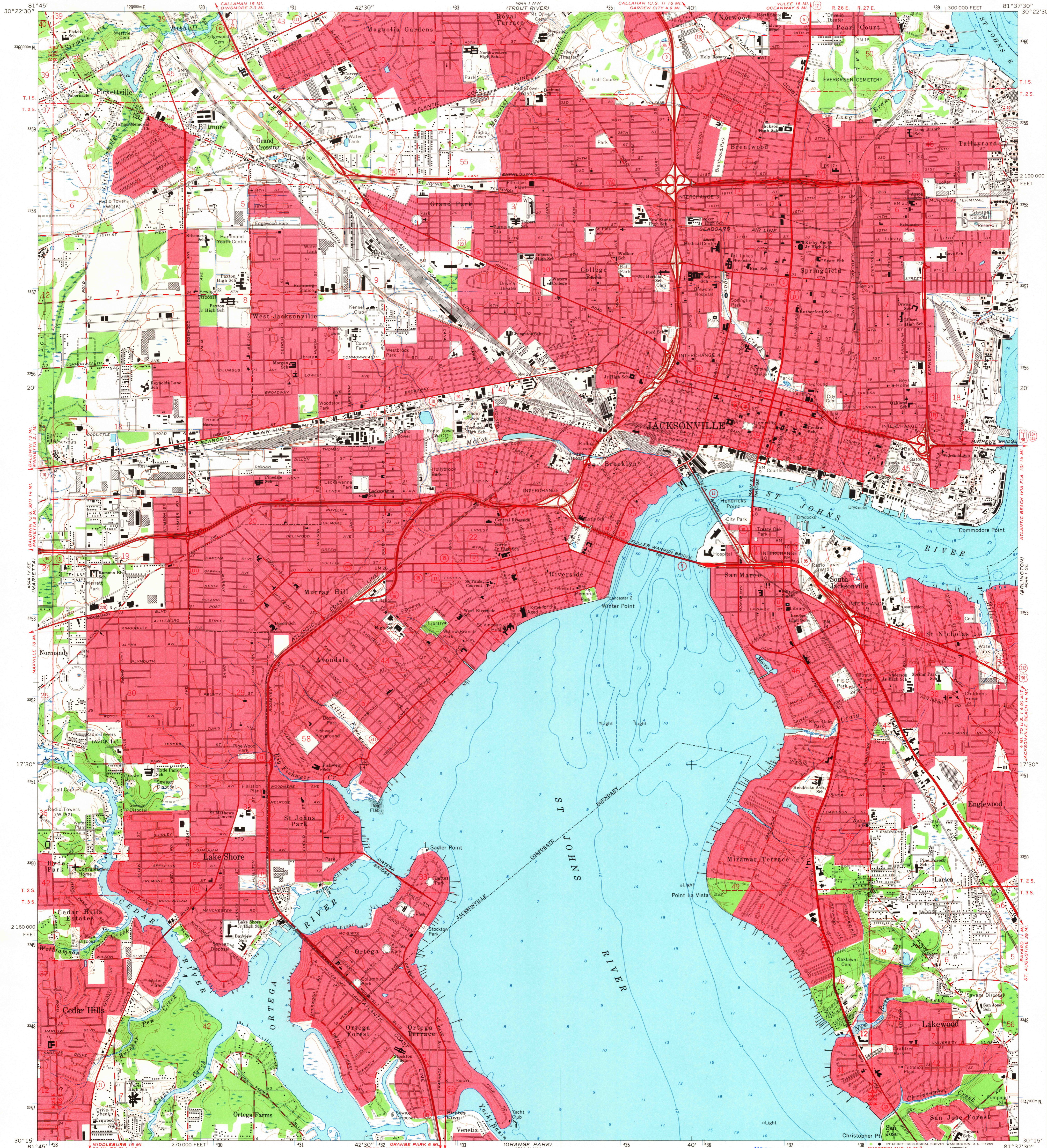


4644 I NW
(TROUT RIVER)

UNITED STATES
DEPARTMENT OF THE INTERIOR
GEOLOGICAL SURVEY

JACKSONVILLE QUADRANGLE
FLORIDA—DUVAL CO.
7.5 MINUTE SERIES (TOPOGRAPHIC)
SW/4 JACKSONVILLE 15' QUADRANGLE

4644 I SE
(EASTPORT)



Maped, edited, and published by the Geological Survey in cooperation with the Department of the Army Control by USGS, USC&GS, USCE, and Florida Geodetic Survey Planimetry in part from USC&GS charts dated 1933 Topography by planetable surveys 1948. Revised from aerial photographs taken 1963. Field checked 1964 Selected hydrographic data compiled from USC&GS Charts 577 and 685 (1963) This information is not intended for navigational purposes Polyconic projection. 1927 North American datum 10,000-foot grid based on Florida coordinate system, east zone 1000-meter Universal Transverse Mercator grid ticks, zone 17, shown in blue Red tint indicates areas in which only landmark buildings are shown

UTM GRID and 1964 MAGNETIC NORTH DECLINATION AT CENTER OF SHEET

SCALE 1:24,000
CONTOUR INTERVAL 5 FEET
DATUM IS MEAN SEA LEVEL
DEPTH CURVES AND SOUNDINGS IN FEET—DATUM IS MEAN LOW WATER
SHORELINE SHOWN REPRESENTS THE APPROXIMATE LINE OF MEAN HIGH WATER
THE MEAN RANGE OF TIDE IS APPROXIMATELY 1 FOOT

THIS MAP COMPLIES WITH NATIONAL MAP ACCURACY STANDARDS
FOR SALE BY U.S. GEOLOGICAL SURVEY, WASHINGTON, D.C. 20242.
A FOLDER DESCRIBING TOPOGRAPHIC MAPS AND SYMBOLS IS AVAILABLE ON REQUEST

USGS
Historical File
Topographic Division



U.S.G.S.
TOPOGRAPHIC DIVISION

ROAD CLASSIFICATION
Heavy-duty ——— Light-duty ———
Medium-duty ——— Unimproved dirt ———
Interstate Route U.S. Route State Route

JACKSONVILLE, FLA.
SW/4 JACKSONVILLE 15' QUADRANGLE
N3015—W8137.5/7.5
1964
AMS 4644 I SW—SERIES V847

4175