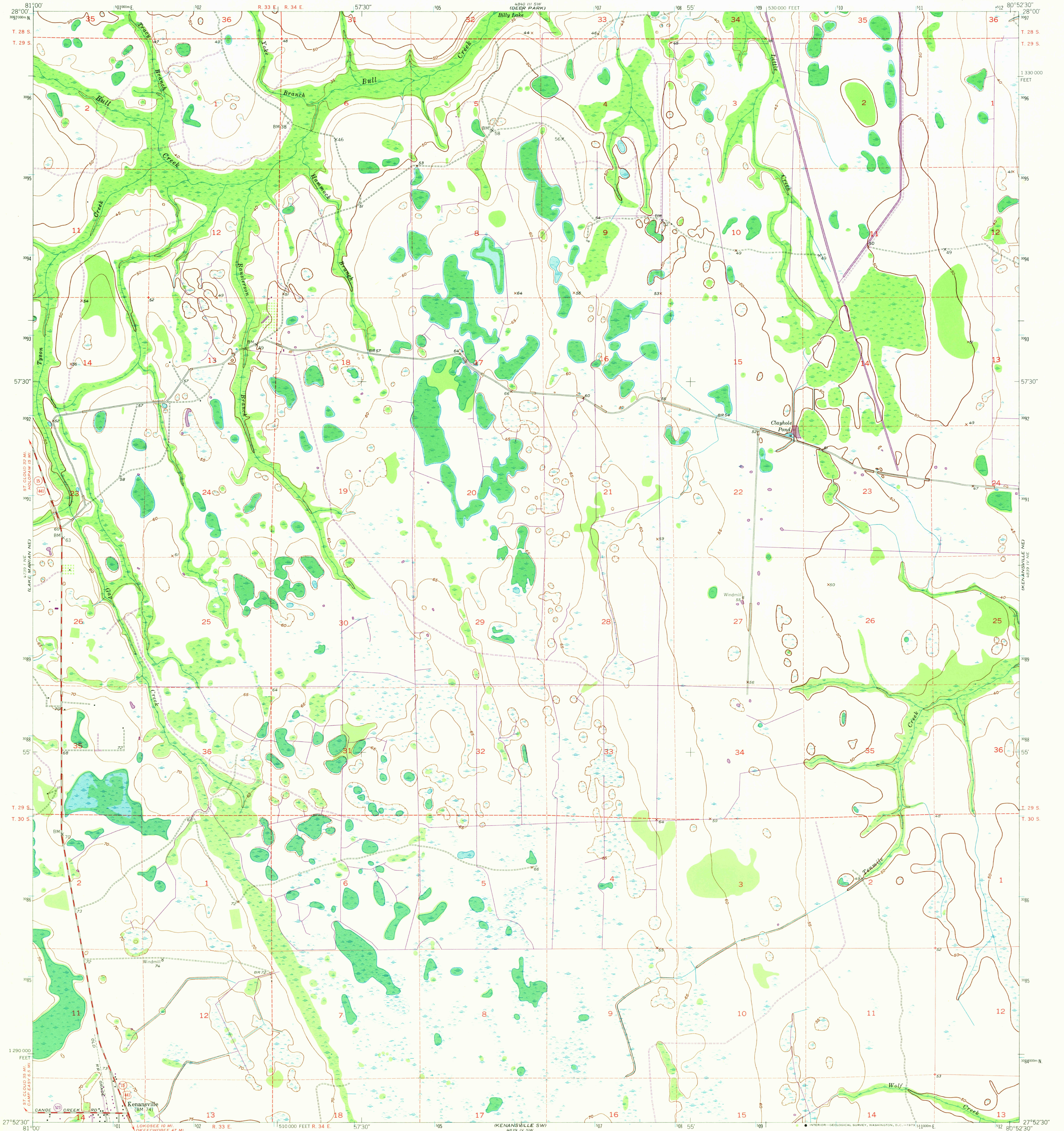


24001 56  
(HOLCOMB SE)

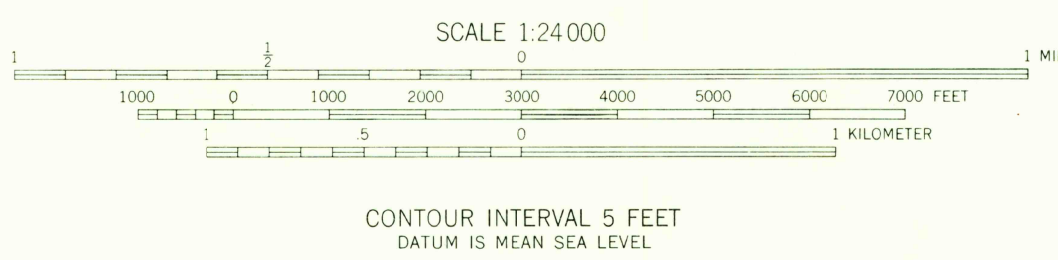
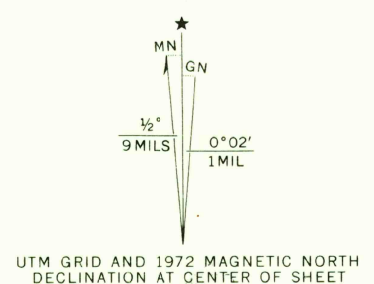
UNITED STATES  
DEPARTMENT OF THE INTERIOR  
GEOLOGICAL SURVEY

KENANSVILLE QUADRANGLE  
FLORIDA-OSCEOLA CO.  
7.5 MINUTE SERIES (TOPOGRAPHIC)

24001 55 56  
(DEER PARK SE)



Mapped, edited, and published by the Geological Survey  
Control by USGS and USC&GS  
Culture and drainage in part compiled by  
U. S. Corps of Engineers and Geological Survey  
from aerial photographs taken 1951.  
Topography by plane-table surveys 1952-1953  
Polyconic projection. 1927 North American datum  
10,000-foot grid based on Florida coordinate system,  
east zone  
Dashed land lines indicate approximate locations  
1000 meter Universal Transverse Mercator grid ticks  
zone 17, shown in blue  
Revisions shown in purple compiled from aerial photographs  
taken 1972. This information not field checked



ROAD CLASSIFICATION		
Heavy-duty	4 LANE 6 LANE	Light-duty
Medium-duty	4 LANE 6 LANE	Unimproved dirt
U. S. Route		State Route

AUG 1 1973  
KENANSVILLE, FLA.  
N2752.5-W8052.5/7.5

1953  
PHOTOREVISED 1972  
AMS 4839 IV NW-SERIES V847

THIS MAP COMPLIES WITH NATIONAL MAP ACCURACY STANDARDS  
FOR SALE BY U.S. GEOLOGICAL SURVEY, WASHINGTON, D. C. 20542  
A FOLDER DESCRIBING TOPOGRAPHIC MAPS AND SYMBOLS IS AVAILABLE ON REQUEST

2015