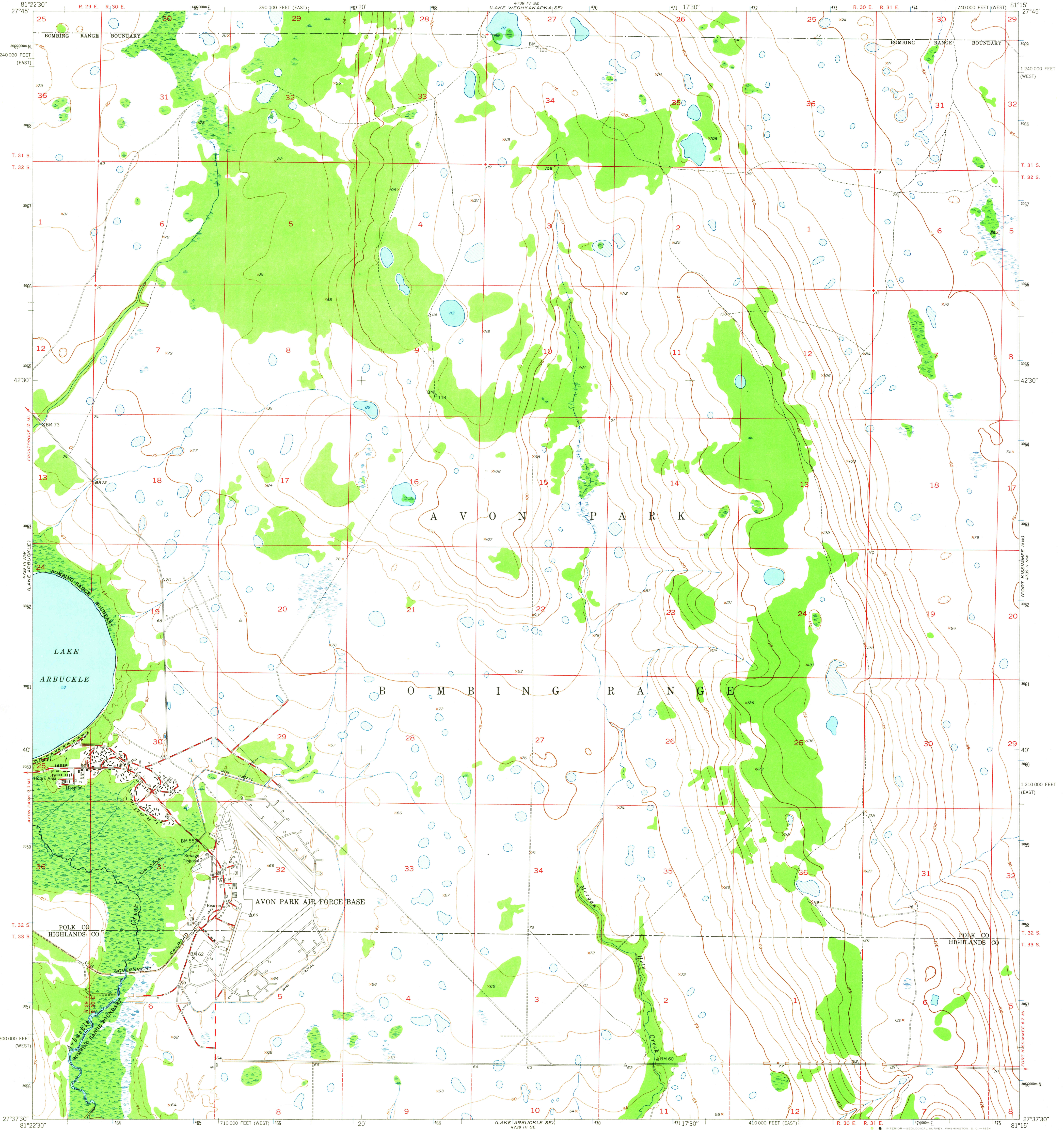


UNITED STATES
DEPARTMENT OF THE INTERIOR
GEOLOGICAL SURVEY

UNITED STATES
DEPARTMENT OF THE ARMY
CORPS OF ENGINEERS

LAKE ARBUCKLE NE. QUADRANGLE
FLORIDA
7.5 MINUTE SERIES (TOPOGRAPHIC)



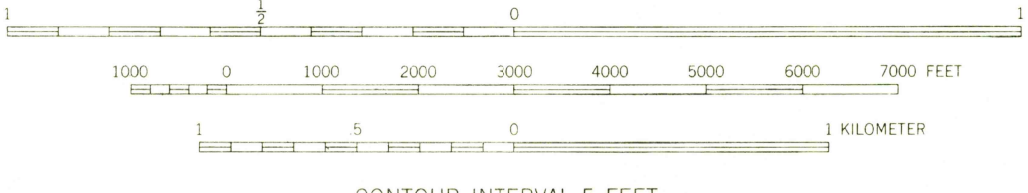
Mapped by U. S. Corps of Engineers
Edited and published by the Geological Survey
Control by USGS, USCE, and
Florida Geodetic Survey

Topography by photogrammetric methods and plane-table
surveys 1950-51. Aerial photographs taken 1950
Culture revision and field check by USGS 1952

Polyconic projection, 1927 North American datum
10,000-foot grids based on Florida coordinate system,
east and west zones

Dashed land lines indicate approximate locations
Certain land lines are omitted in T. 33 S. R. 29 E. and
T. 33 S. R. 30 E. because of insufficient data

1000-meter Universal Transverse Mercator grid ticks,
zone 17, shown in blue



CONTOUR INTERVAL 5 FEET
DATUM IS MEAN SEA LEVEL

USGS
Historical File
Topographic Division



ROAD CLASSIFICATION
Medium-duty — Light-duty
Unimproved dirt —

LAKE ARBUCKLE NE. FLA.
N2735-W8115/7.5

1952

AMS 4739 III NE-SERIES V847

THIS MAP COMPLIES WITH NATIONAL MAP ACCURACY STANDARDS
FOR SALE BY U. S. GEOLOGICAL SURVEY, WASHINGTON 25, D. C.
A FOLDER DESCRIBING TOPOGRAPHIC MAPS AND SYMBOLS IS AVAILABLE ON REQUEST