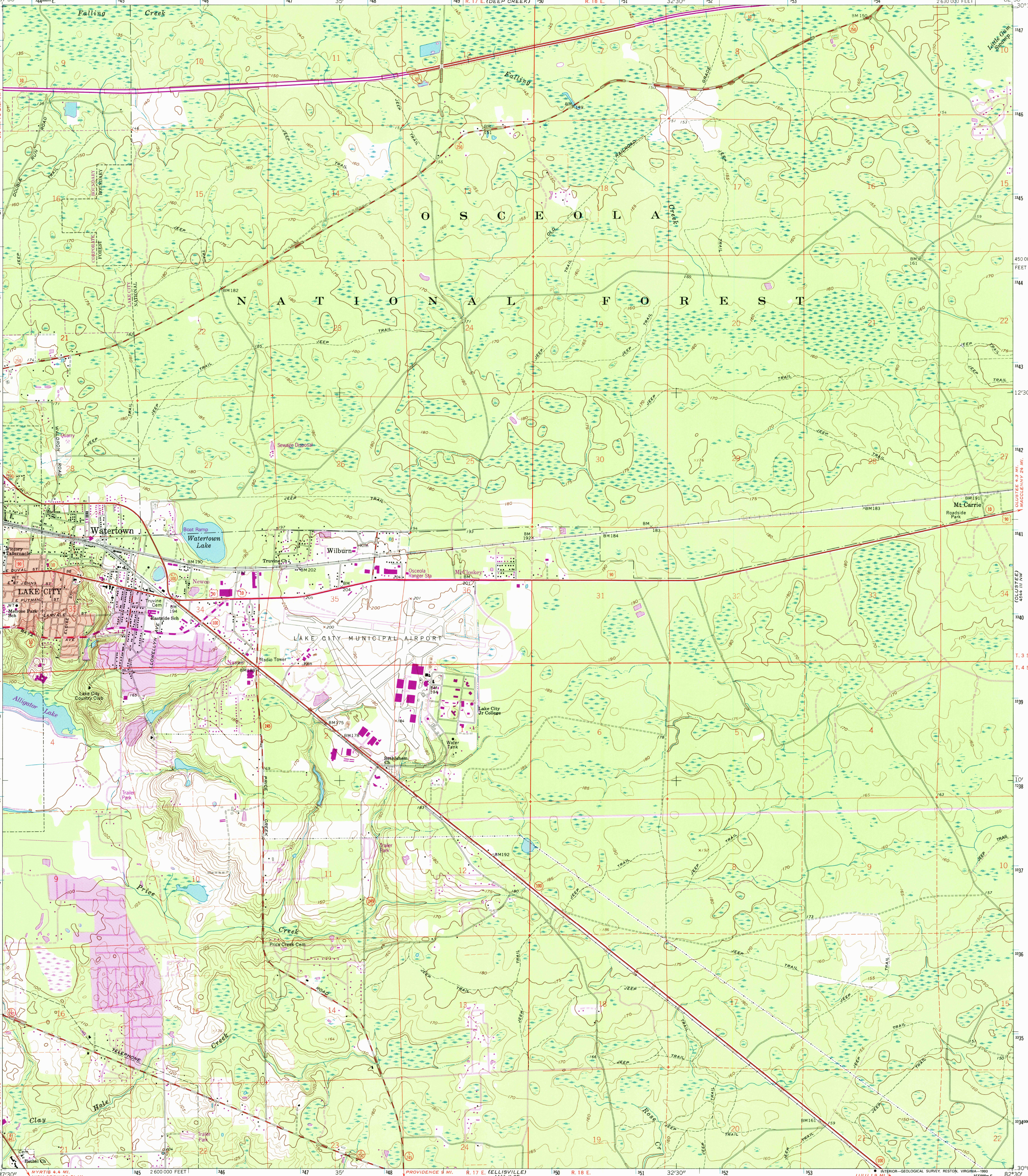


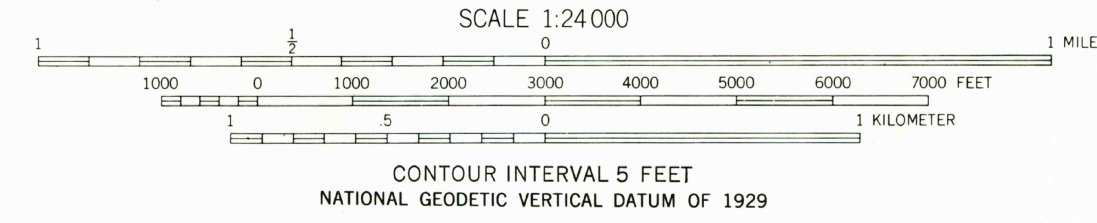
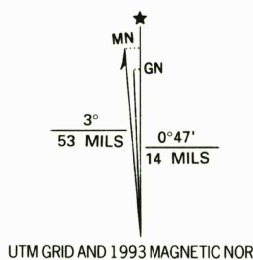
UNITED STATES
DEPARTMENT OF THE INTERIOR
GEOLOGICAL SURVEY

STATE OF FLORIDA
STATE ROAD DEPARTMENT AND
INTERNAL IMPROVEMENT FUND

LAKE CITY EAST QUADRANGLE
FLORIDA—COLUMBIA CO.
7.5 MINUTE SERIES (TOPOGRAPHIC)



Produced by the United States Geological Survey
Control by USGS, NOS/NOAA and Florida Geodetic Survey
Topography by photogrammetric methods from aerial photographs taken 1959-60. Field checked 1962
Projection and 10,000-foot grid ticks: Florida coordinate system, north zone (Lambert conformal conic)
1000-meter Universal Transverse Mercator grid ticks, zone 17, shown in blue
1927 North American Datum (NAD 27)
North American Datum of 1983 (NAD 83) is shown by dashed corner ticks
The values of the shift between NAD 27 and NAD 83 for 7.5-minute intersections are given in USGS Bulletin 1875
There may be private inholdings within the boundaries of the National or State reservations shown on this map
Red tint indicates area in which only landmark buildings are shown
Purple tint indicates extension of urban area



ROAD CLASSIFICATION
Primary highway, hard surface
Secondary highway, hard surface
Interstate Route
U.S. Route
State Route
Light-duty road, hard or improved surface
Unimproved road



LAKE CITY EAST, FLA.
30082-B5-TF-024
1962
REVISED 1993
DMA 4444 II NE-SERIES V847

THIS MAP COMPLIES WITH NATIONAL MAP ACCURACY STANDARDS
FOR SALE BY U. S. GEOLOGICAL SURVEY, DENVER, COLORADO 80225, OR RESTON, VIRGINIA 22092
A FOLDER DESCRIBING TOPOGRAPHIC MAPS AND SYMBOLS IS AVAILABLE ON REQUEST

Revisions shown in purple and woodland compiled in cooperation with State of Florida agencies from aerial photographs taken 1990 and other sources
Contours not revised. This information not field checked
Map edited 1993