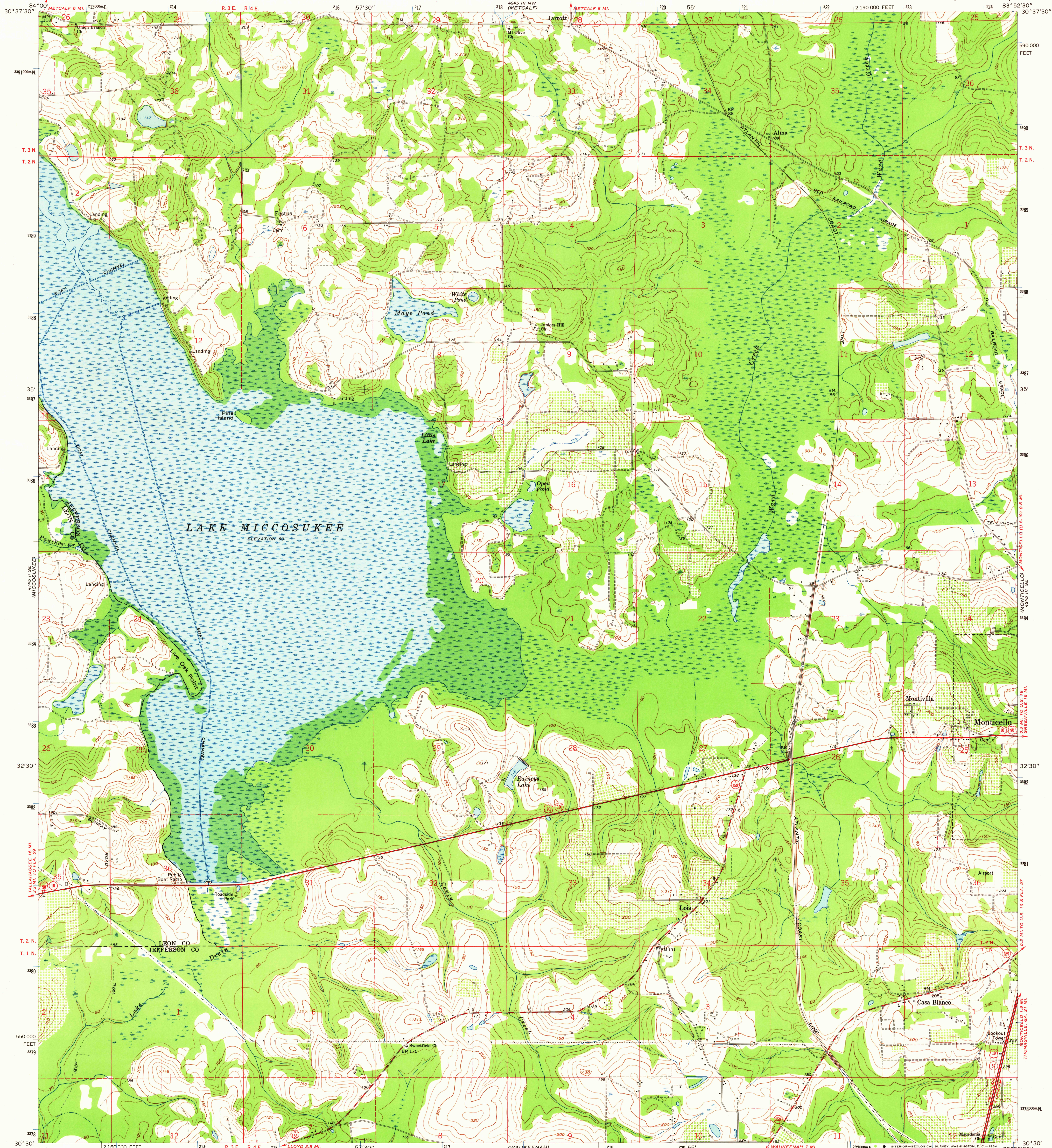
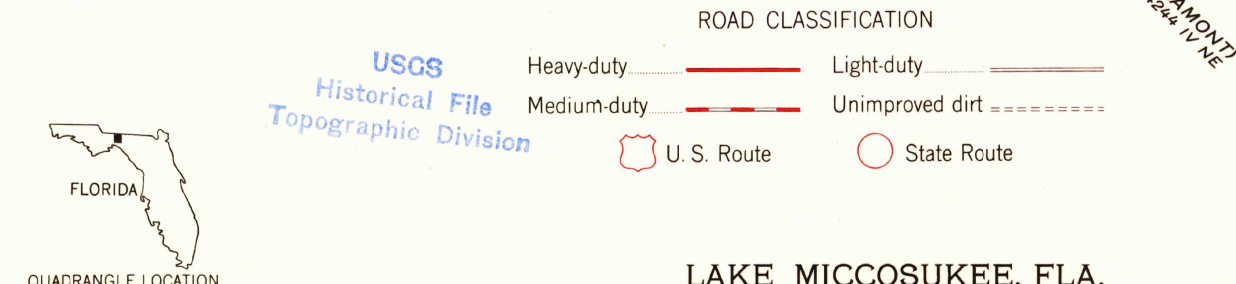
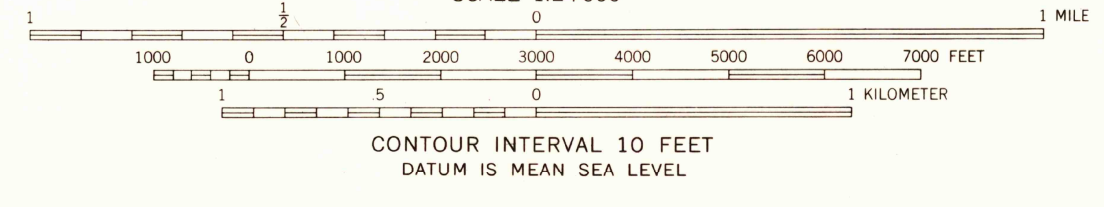
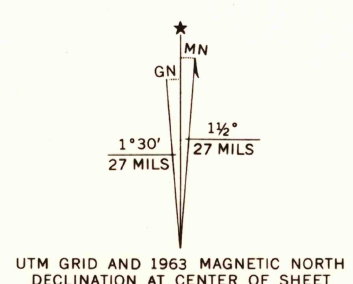


UNITED STATES  
DEPARTMENT OF THE INTERIOR  
GEOLOGICAL SURVEY

LAKE MICCOSUKEE QUADRANGLE  
FLORIDA  
7.5 MINUTE SERIES (TOPOGRAPHIC)



Mapped, edited, and published by the Geological Survey  
Control by USGS and USC&GS  
Topography by photogrammetric methods from aerial photographs  
taken 1952. Field checked 1962 and 1963  
Polyconic projection. 1927 North American datum  
10,000-foot grid based on Florida coordinate system, north zone  
1000-meter Universal Transverse Mercator grid ticks,  
zone 17, shown in blue  
Fine red dashed lines indicate selected fence and field lines where  
generally visible on aerial photographs. This information is unchecked



THIS MAP COMPLIES WITH NATIONAL MAP ACCURACY STANDARDS  
FOR SALE BY U. S. GEOLOGICAL SURVEY, WASHINGTON 25, D. C.  
A FOLDER DESCRIBING TOPOGRAPHIC MAPS AND SYMBOLS IS AVAILABLE ON REQUEST

LAKE MICCOSUKEE, FLA.  
N3030—W8352.5/7.5

1963  
AMS 4245 III SW—SERIES W847

2625  
AUG 10 1964