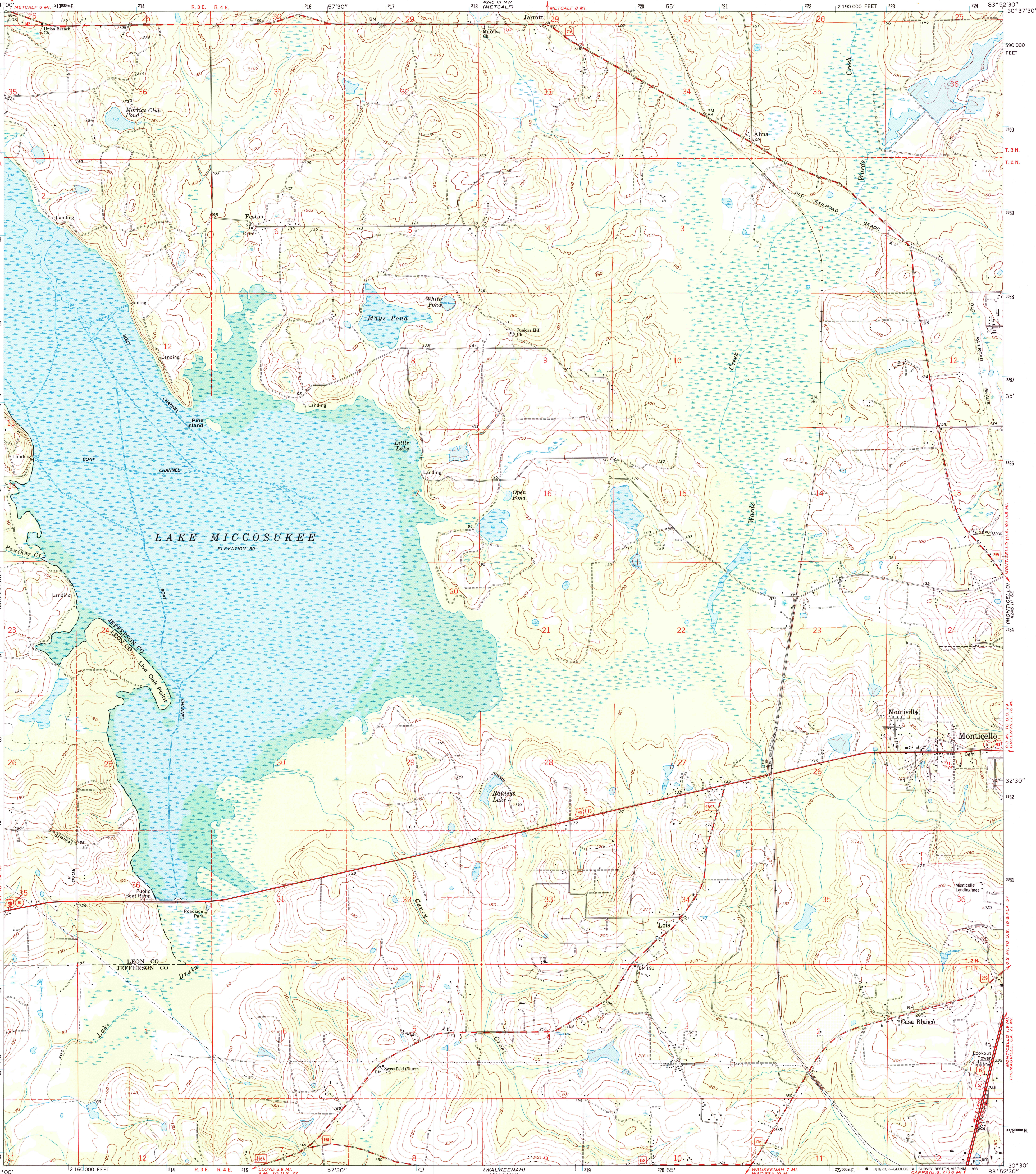
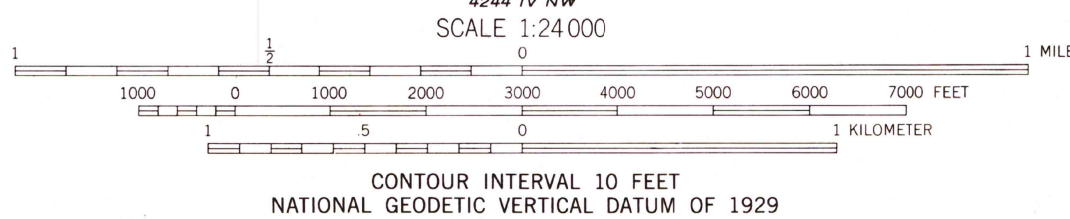
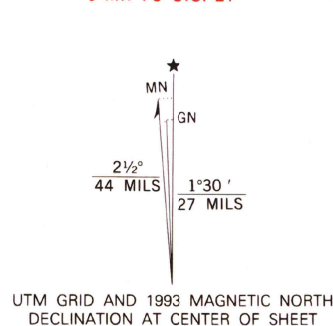


UNITED STATES
DEPARTMENT OF THE INTERIOR
GEOLOGICAL SURVEY

LAKE MICCOSUKEE QUADRANGLE
FLORIDA
7.5 MINUTE SERIES (TOPOGRAPHIC)



Mapped, edited, and published by the Geological Survey
Control by USGS and NOS/NOAA
Topography by photogrammetric methods from aerial photographs
taken 1952. Field checked 1962 and 1963
Polyconic projection. 10,000-foot grid based on
Florida coordinate system, north zone
1000-meter Universal Transverse Mercator grid ticks,
zone 17, shown in blue
1927 North American Datum (NAD 27)
North American Datum of 1983 (NAD 83) is shown by dashed
corner ticks. The values of the shift between NAD 27 and NAD 83
for 7.5-minute intersections are given in USGS Bulletin 1875
Fine red dashed lines indicate selected fence and field lines
where generally visible on aerial photographs
This information is unchecked
Revisions compiled in cooperation with State of Florida agencies
from aerial photographs taken 1990 and other sources. Contours
not revised. This information not field checked. Map edited 1993



THIS MAP COMPLIES WITH NATIONAL MAP ACCURACY STANDARDS
FOR SALE BY U.S. GEOLOGICAL SURVEY
DENVER, COLORADO 80225 OR RESTON, VIRGINIA 22092
A FOLDER DESCRIBING TOPOGRAPHIC MAPS AND SYMBOLS IS AVAILABLE ON REQUEST



ROAD CLASSIFICATION
Primary highway, hard surface
Secondary highway, hard surface
Unimproved road
Light-duty road, hard or improved surface
Interstate Route
U. S. Route
State Route
County Route
LAKE MICCOSUKEE, FLA.
30083-E8-1F-024
1993
REVISED 1993
DMA 4245 III SW - SERIES V847