

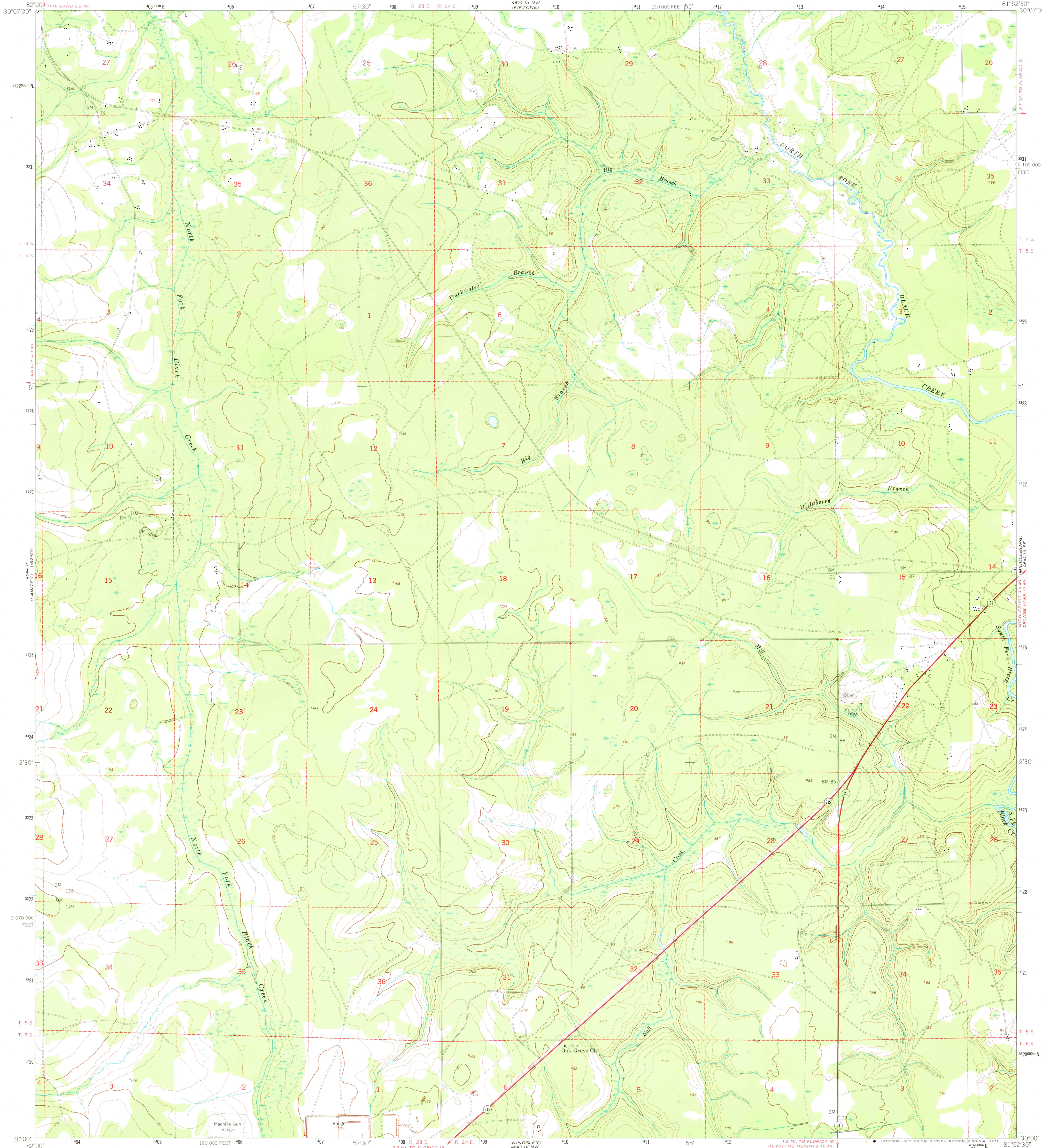
(LAWLEY) 4644 III SW
1:25,000

UNITED STATES
DEPARTMENT OF THE INTERIOR
GEOLOGICAL SURVEY

UNITED STATES
DEPARTMENT OF THE ARMY
CORPS OF ENGINEERS

MIDDLEBURG SW QUADRANGLE
FLORIDA-CLAY CO.
7.5 MINUTE SERIES (TOPOGRAPHIC)
SW/4 MIDDLEBURG 15' QUADRANGLE

MMA III NE
UACSS (HEIGHTS)

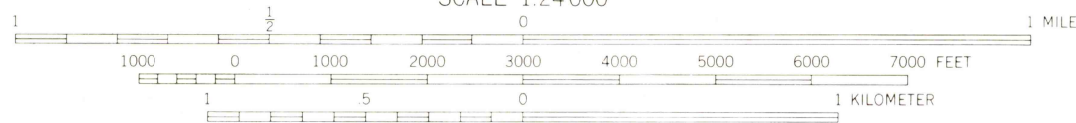
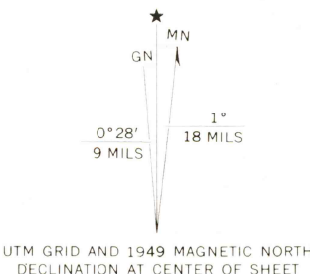


Mapped by the Army Map Service
Published for civil use by the Geological Survey

Control by USC&GS, USCE, and Florida Geodetic Survey
Topography from aerial photographs by multiplex methods
Aerial photographs taken 1946-1947. Field check 1949
Polyconic projection. 1927 North American datum
10,000-foot grid based on Florida coordinate system,
east zone

No distinction is made between barns, dwellings,
commercial and industrial buildings
Boundary for Camp Blanding is omitted because
of insufficient data

Dashed land lines indicate approximate locations
Unchecked elevations are shown in brown
1000-meter Universal Transverse Mercator grid ticks,
zone 17, shown in blue
Map photoinspected 1970



CONTOUR INTERVAL 10 FEET
DATUM IS MEAN SEA LEVEL

THIS MAP COMPLIES WITH NATIONAL MAP ACCURACY STANDARDS
FOR SALE BY U. S. GEOLOGICAL SURVEY, RESTON, VIRGINIA 22092
A FOLDER DESCRIBING TOPOGRAPHIC MAPS AND SYMBOLS IS AVAILABLE ON REQUEST



ROAD CLASSIFICATION
Heavy-duty 4 LANE 6 LANE Light-duty
Medium-duty 4 LANE 6 LANE Unimproved dirt
U. S. Route State Route

MIDDLEBURG SW, FLA.
SW/4 MIDDLEBURG 15' QUADRANGLE
N3000-W8152.5/7.5

1949
PHOTOINSPECTED 1970
AMS 4644 III SW-SERIES V847

MAR 06 1974

1905