

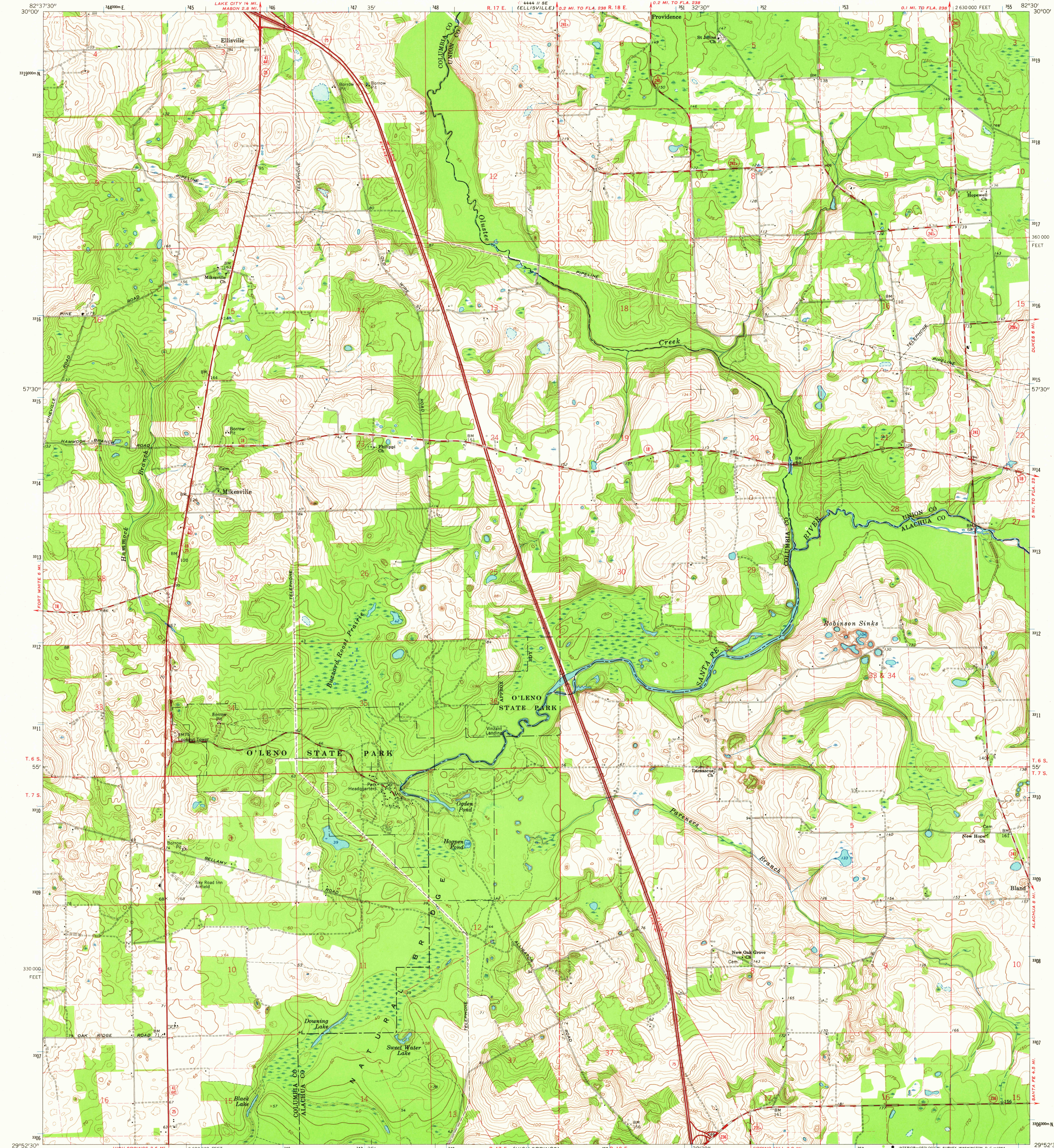
4441.115W
(COLUMBIA)

UNITED STATES
DEPARTMENT OF THE INTERIOR
GEOLOGICAL SURVEY

STATE OF FLORIDA
STATE ROAD DEPARTMENT
AND INTERNAL IMPROVEMENT FUND

MIKESVILLE QUADRANGLE
FLORIDA

7.5 MINUTE SERIES (TOPOGRAPHIC)



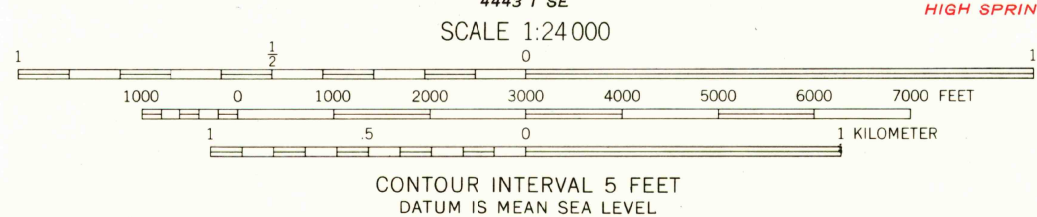
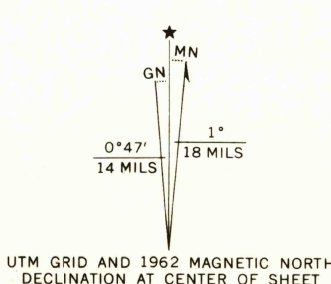
Mapped, edited, and published by the Geological Survey

Control by USGS, USC&GS, and Florida Geodetic Survey

Topography by photogrammetric methods from aerial photographs taken 1960. Field checked 1962

Polyconic projection. 1927 North American datum
10,000-foot grid based on Florida coordinate system, north zone
1000-meter Universal Transverse Mercator grid ticks,
zone 17, shown in blue

Fine red dashed lines indicate selected fence and field lines where
generally visible on aerial photographs. This information is unchecked



USGS
Historical File
Topographic Division



ROAD CLASSIFICATION	
Heavy-duty	Light-duty
Medium-duty	Unimproved dirt
Interstate Route	U.S. Route
	State Route

MIKESVILLE, FLA.
N2952.5-W8230.7.5

1962

AMS 4443 I NE-SERIES V847

THIS MAP COMPLIES WITH NATIONAL MAP ACCURACY STANDARDS
FOR SALE BY U.S. GEOLOGICAL SURVEY, WASHINGTON 25, D. C.
A FOLDER DESCRIBING TOPOGRAPHIC MAPS AND SYMBOLS IS AVAILABLE ON REQUEST

3030
AUG 10 1964