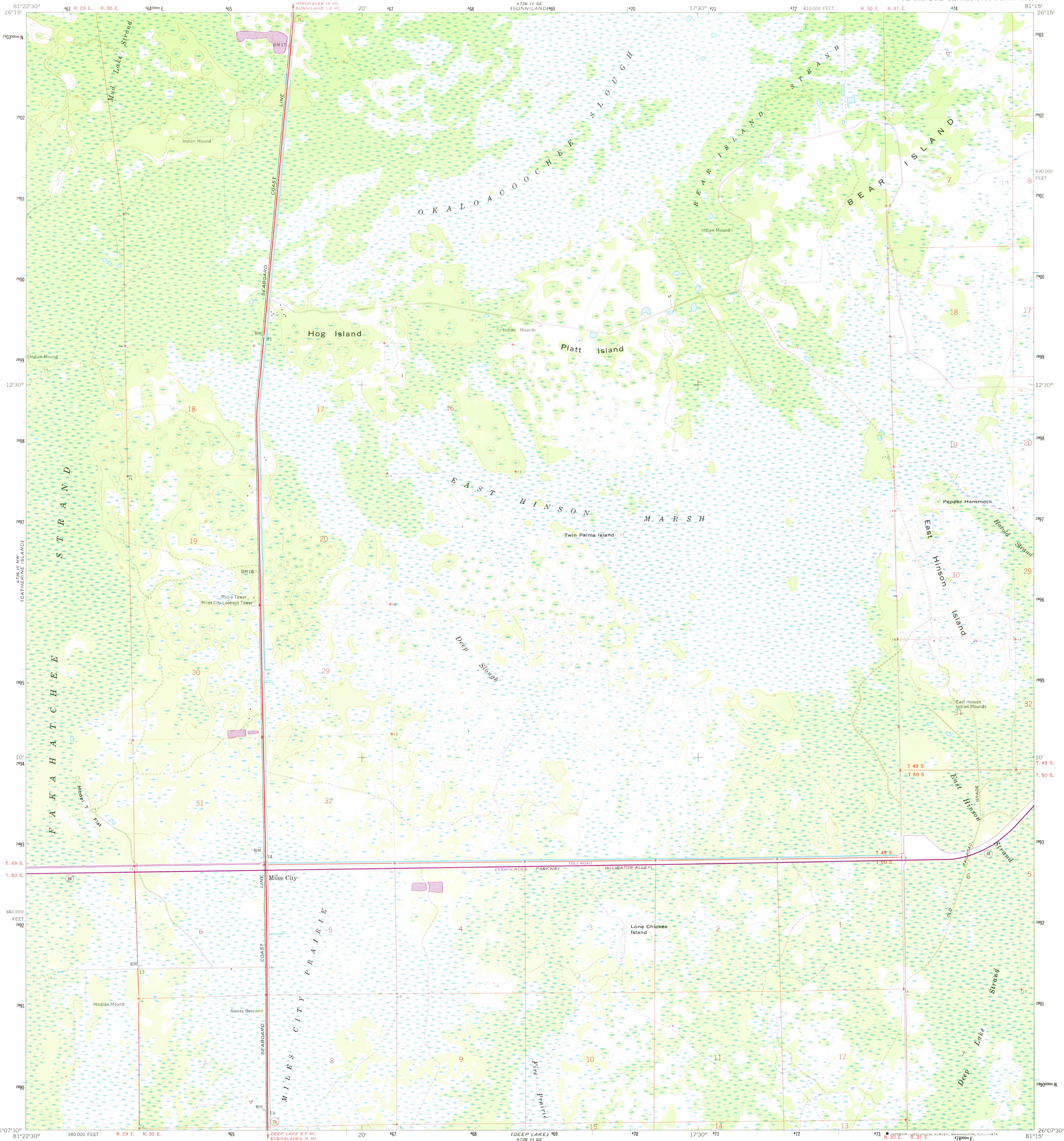


4736 III NW
IMMOKALEE SW

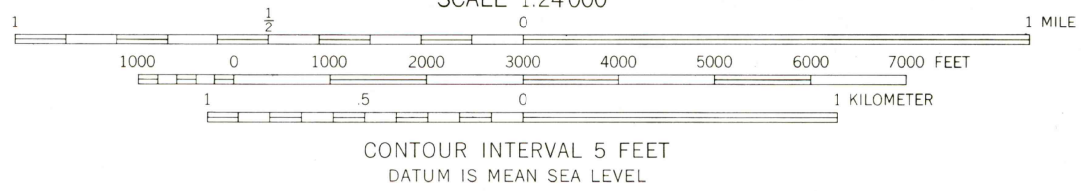
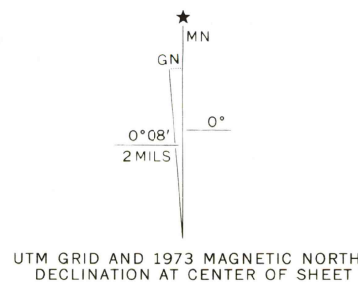
UNITED STATES
DEPARTMENT OF THE INTERIOR
GEOLOGICAL SURVEY

MILES CITY QUADRANGLE
FLORIDA—COLLIER CO.
7.5 MINUTE SERIES (TOPOGRAPHIC)



DEEP LAKE SW
4736 III SW

Mapped, edited, and published by the Geological Survey
Control by USGS and USC&GS
Culture and drainage in part compiled from aerial photographs taken 1952–1953. Topography by planetable surveys 1959
Polyconic projection. 1927 North American datum
10,000-foot grid based on Florida coordinate system, east zone 1000-meter Universal Transverse Mercator grid ticks, zone 17, shown in blue
Certain land lines unsurveyed in T. 49 S.–R. 30 E., and T. 50 S.–R. 31 E.
Land lines unsurveyed in T. 49 S.–R. 29 E., and T. 50 S.–R. 29 E.
Dotted land lines established by private survey
Revisions shown in purple compiled from aerial photographs taken 1973. This information not field checked



USGS
Historical File
Topographic Division

ROAD CLASSIFICATION
Heavy-duty ——— Light-duty ———
Unimproved dirt ———
State Route

APR 25 1974

MILES CITY, FLA.
N 2607.5—W 8115.7/5

1959
PHOTOREVISED 1973
AMS 4756 III NE—SERIES V847

THIS MAP COMPLIES WITH NATIONAL MAP ACCURACY STANDARDS
FOR SALE BY U.S. GEOLOGICAL SURVEY, RESTON, VIRGINIA 22092
A FOLDER DESCRIBING TOPOGRAPHIC MAPS AND SYMBOLS IS AVAILABLE ON REQUEST

3140