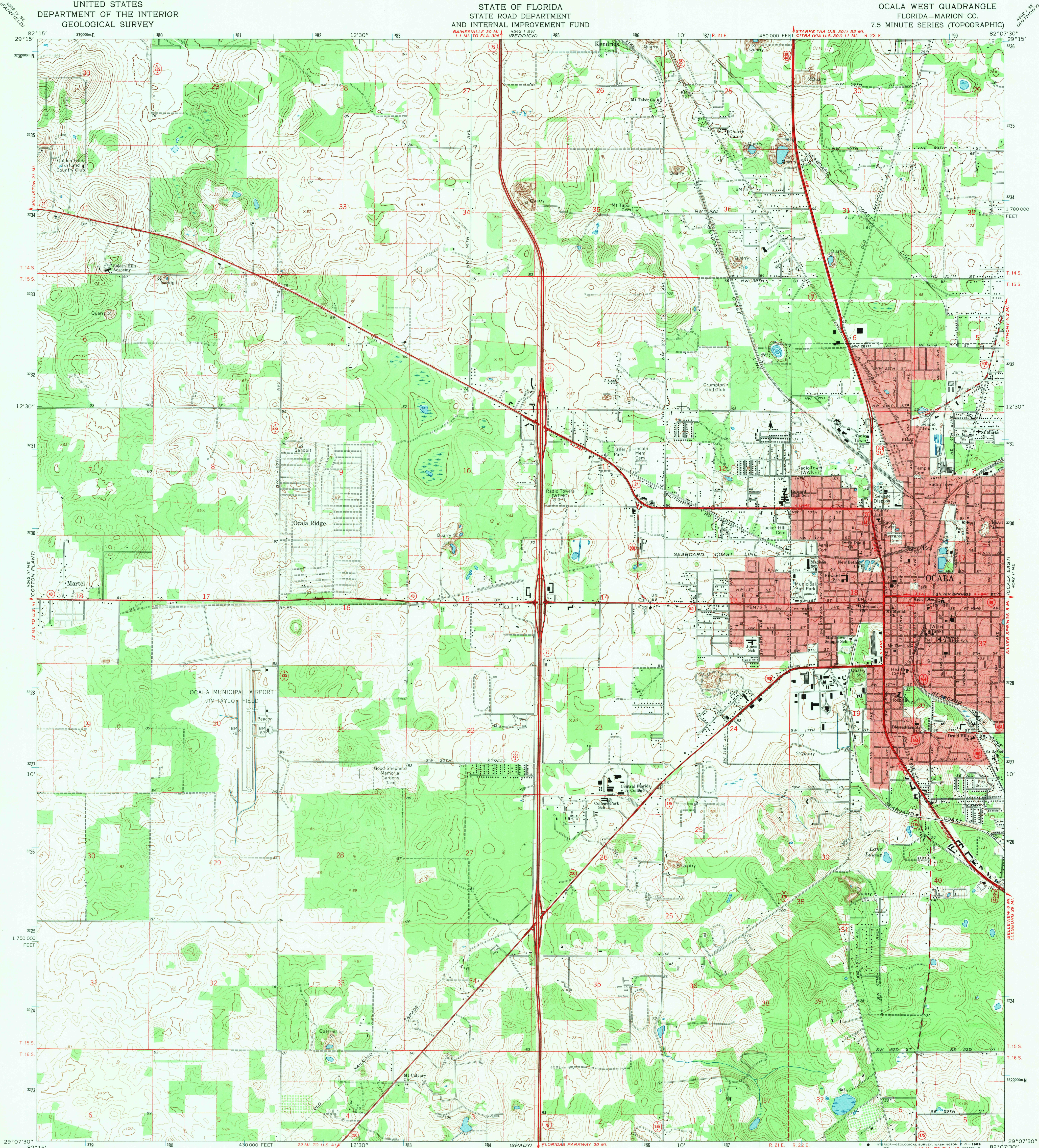


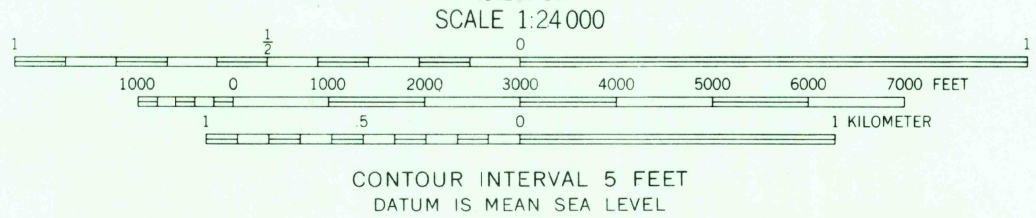
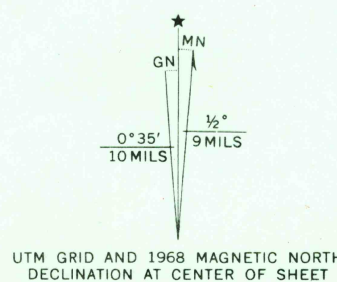
UNITED STATES
DEPARTMENT OF THE INTERIOR
GEOLOGICAL SURVEY

STATE OF FLORIDA
STATE ROAD DEPARTMENT
AND INTERNAL IMPROVEMENT FUND

OCALA WEST QUADRANGLE
FLORIDA—MARION CO.
7.5 MINUTE SERIES (TOPOGRAPHIC)



Mapped, edited, and published by the Geological Survey
Control by USGS, USC&GS, and Florida Geodetic Survey
Topography by photogrammetric methods from aerial photographs
taken 1964. Field checked 1968
Polyconic projection. 1927 North American datum
10,000-foot grid based on Florida coordinate system, west zone
1000-meter Universal Transverse Mercator grid ticks, zone 17,
shown in blue
Fine red dashed lines indicate selected fence and field lines where
generally visible on aerial photographs. This information is unchecked
Red tint indicates area in which only landmark buildings are shown



ROAD CLASSIFICATION	
Primary highway, all weather, hard surface	Light-duty road, all weather, improved surface
Secondary highway, all weather, hard surface	Unimproved road, fair or dry weather
Interstate Route	U. S. Route
	State Route

U.S.G.S.
FILE COPY
TOPOGRAPHIC DIVISION

OCALA WEST, FLA.
N2907.5—W8207.5/7.5
1968
AMS 4542 II NW—SERIES V847

2705