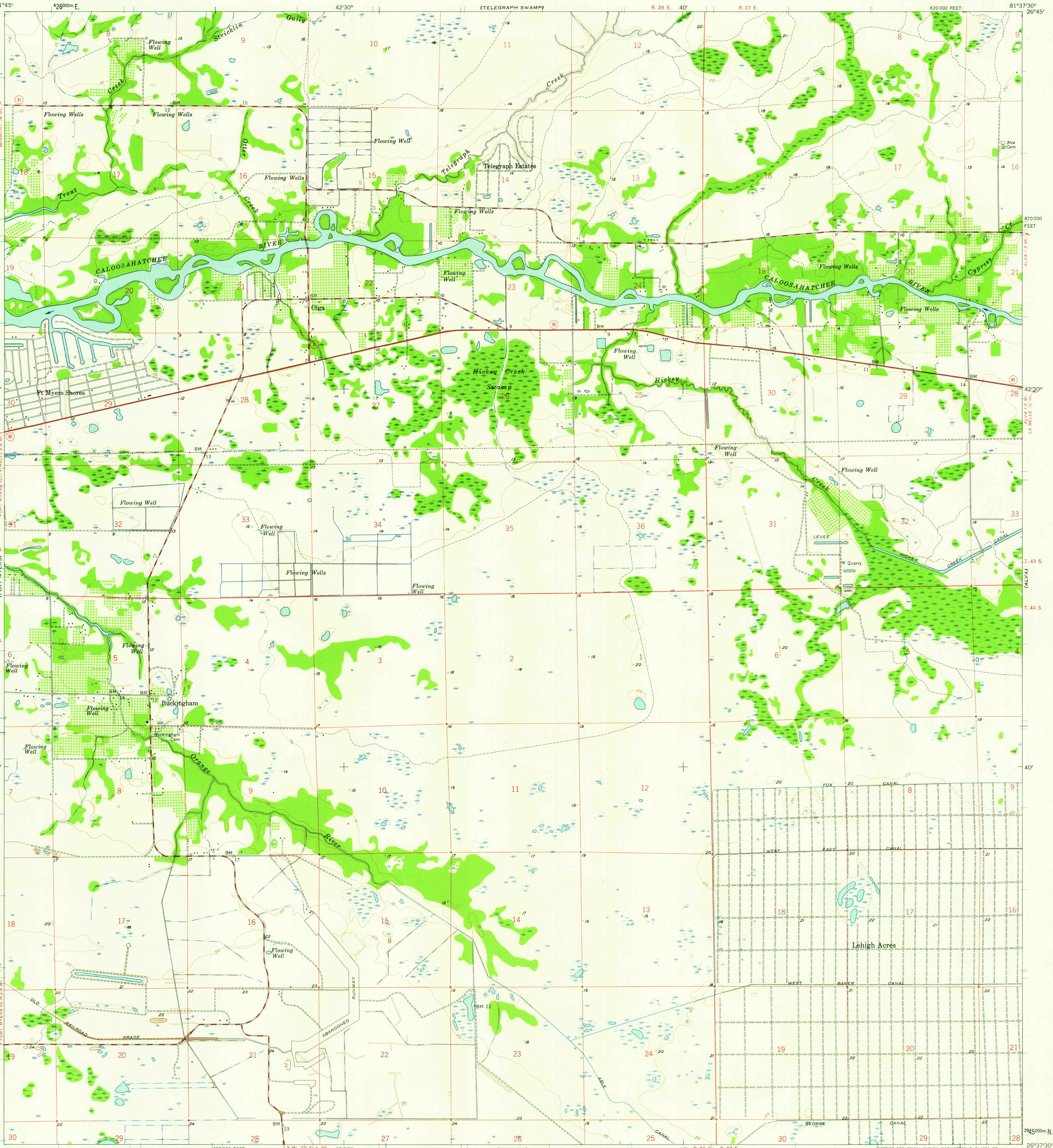


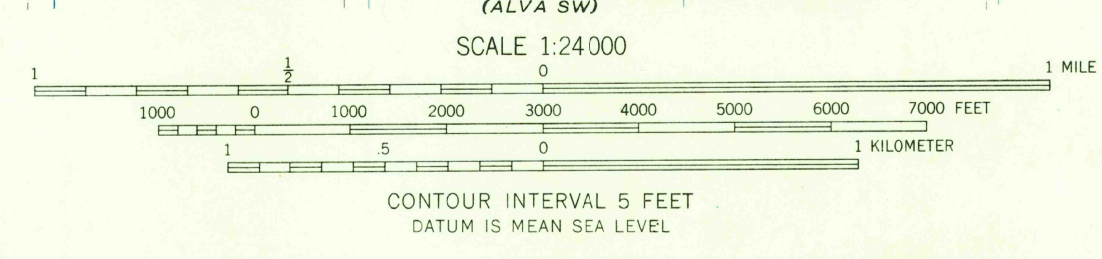
UNITED STATES
DEPARTMENT OF THE INTERIOR
GEOLOGICAL SURVEY

OLGA QUADRANGLE
FLORIDA - LEE CO.
7.5 MINUTE SERIES (TOPOGRAPHIC)



Maped, edited, and published by the Geological Survey
Control by USGS and USC&GS
Culture and drainage in part compiled from aerial photographs
taken 1951-1952. Topography by planetable surveys 1957-1958
Polyconic projection. 1927 North American datum
10,000-foot grid based on Florida coordinate system, west zone
1000-meter Universal Transverse Mercator grid ticks,
zone 17, shown in blue

TRUE NORTH
MAGNETIC NORTH
APPROXIMATE MEAN
DECLINATION, 1958



USGS
Historical File
Topographic Division

ROAD CLASSIFICATION
Heavy-duty ——— Light-duty ———
Medium-duty ——— Unimproved dirt ———
○ State Route



U.S.G.S.
FILE COPY
TOPOGRAPHIC DIVISION

OLGA, FLA.
N 2637.5 - W 8137.5 / 7.5

1958

THIS MAP COMPLIES WITH NATIONAL MAP ACCURACY STANDARDS
FOR SALE BY U. S. GEOLOGICAL SURVEY, WASHINGTON 25, D. C.
A FOLDER DESCRIBING TOPOGRAPHIC MAPS AND SYMBOLS IS AVAILABLE ON REQUEST

MAR 6 1958

2315