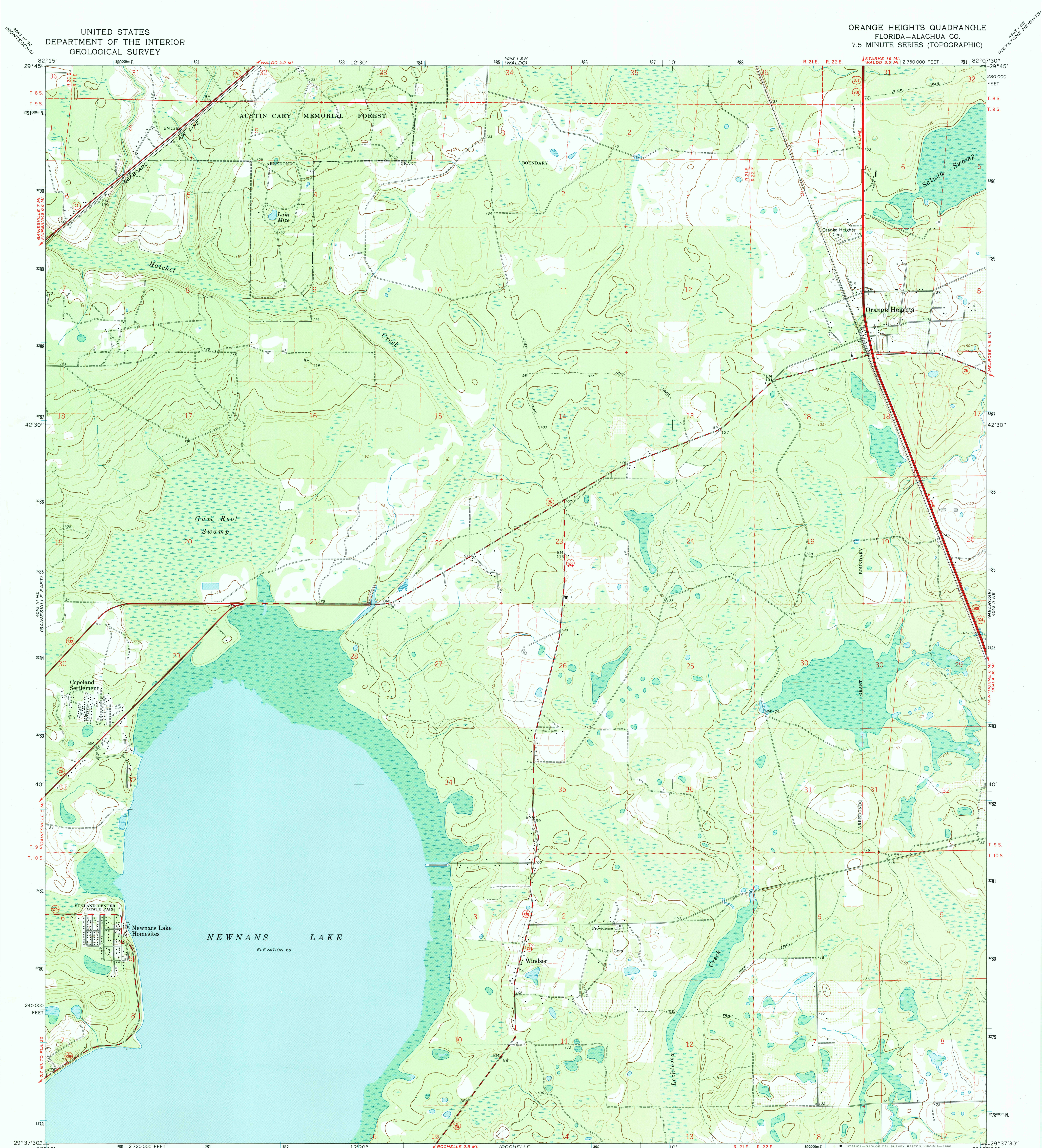


UNITED STATES  
DEPARTMENT OF THE INTERIOR  
GEOLOGICAL SURVEY

ORANGE HEIGHTS QUADRANGLE  
FLORIDA-ALACHUA CO.  
7.5 MINUTE SERIES (TOPOGRAPHIC)



Mapped, edited, and published by the Geological Survey

Control by USGS, USC&GS, and Florida Geodetic Survey

Topography by photogrammetric methods from aerial

photographs taken 1964. Field checked 1966

Polyconic projection. 1927 North American Datum

10,000-foot grid based on Florida coordinate system, north zone

1000-meter Universal Transverse Mercator grid ticks,

zone 17, shown in blue

To place on the predicted North American Datum 1983

move the projection lines 24 meters south and

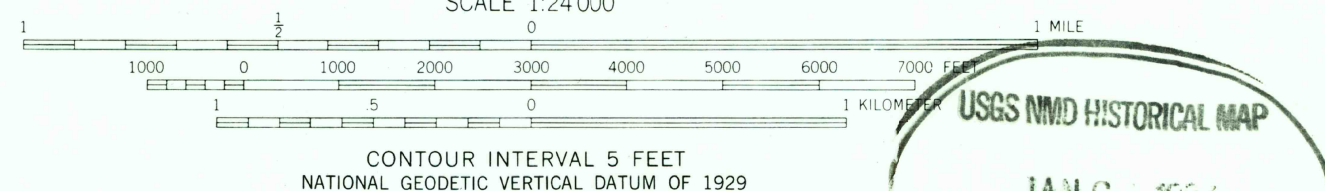
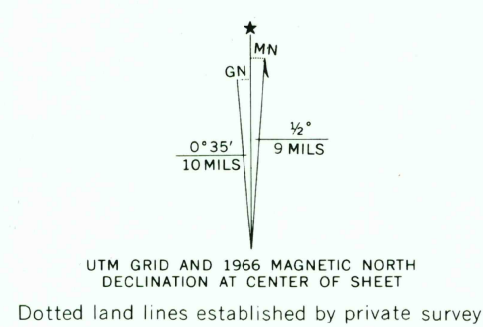
16 meters west as shown by dashed corner ticks

There may be private inholdings within the boundaries

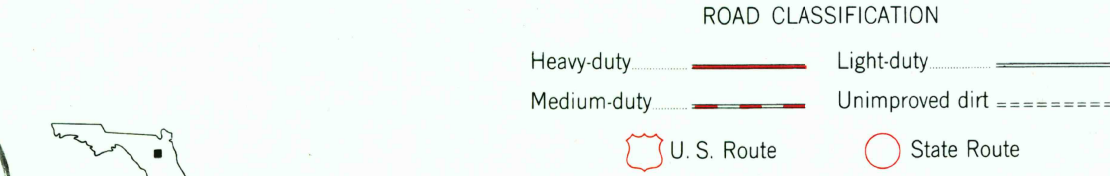
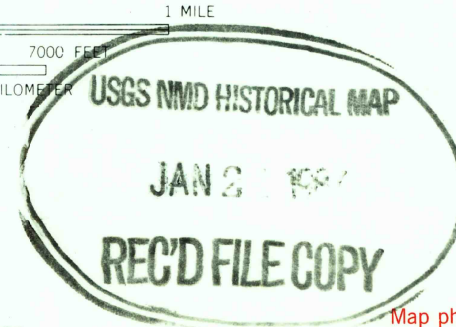
of the National or State reservations shown on this map

Fine red dashed lines indicate selected fence and field lines where

generally visible on aerial photographs. This information is unchecked



THIS MAP COMPLIES WITH NATIONAL MAP ACCURACY STANDARDS  
FOR SALE BY U. S. GEOLOGICAL SURVEY, RESTON, VIRGINIA 22092  
A FOLDER DESCRIBING TOPOGRAPHIC MAPS AND SYMBOLS IS AVAILABLE ON REQUEST



ORANGE HEIGHTS, FLA.

N2937.5-W8207.5/7.5

1966  
PHOTOINSPECTED 1976  
AMS 4543 II NW-SERIES V847