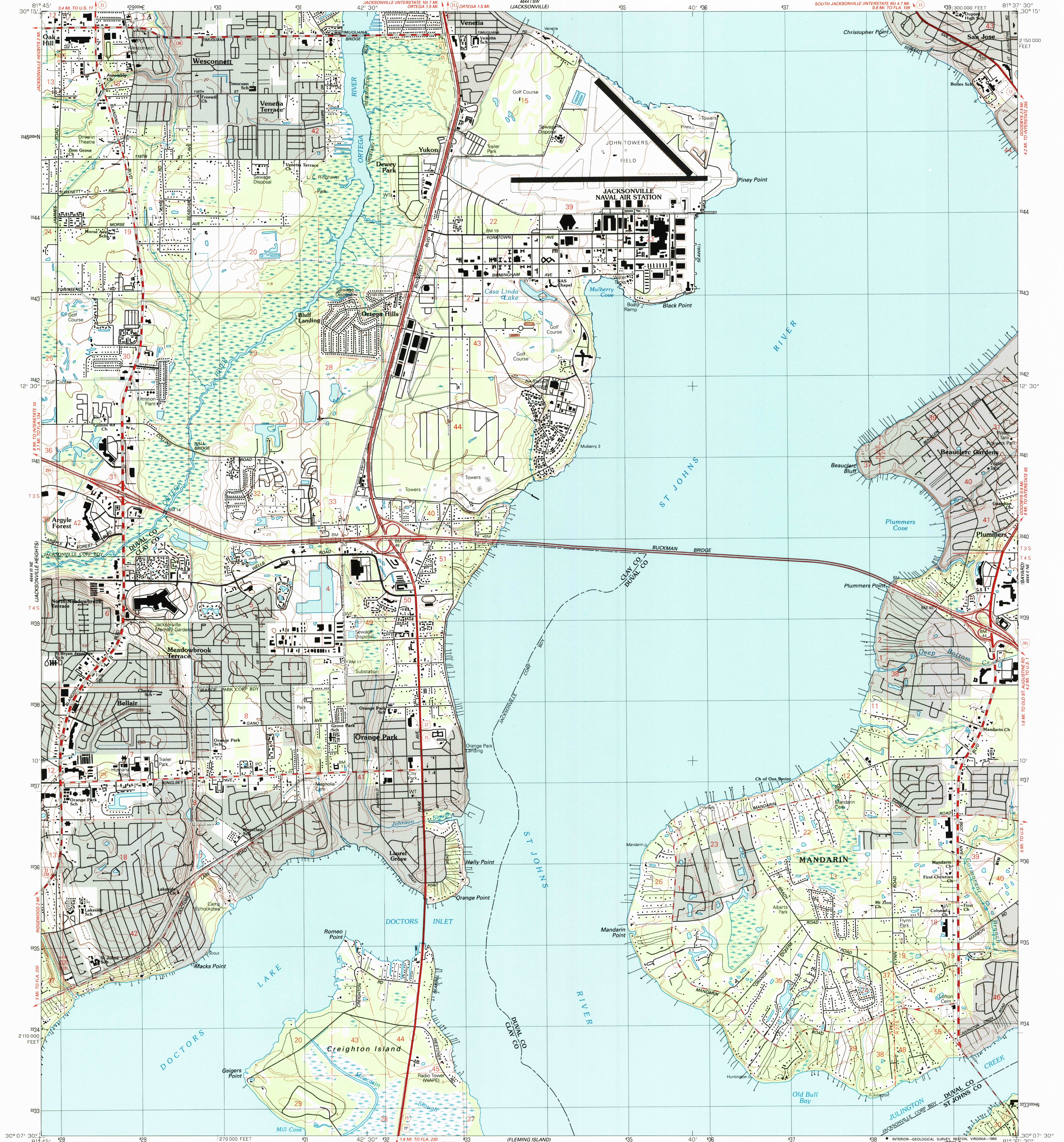


UNITED STATES
DEPARTMENT OF THE INTERIOR
GEOLOGICAL SURVEY

ORANGE PARK QUADRANGLE
FLORIDA
7.5 MINUTE SERIES (TOPOGRAPHIC)



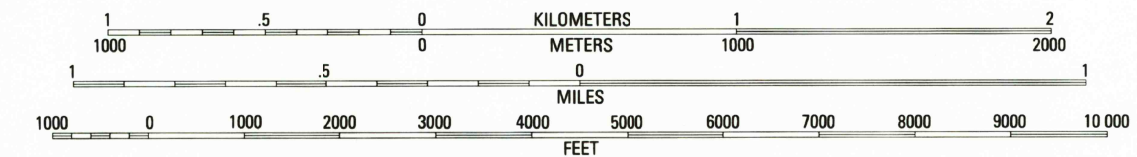
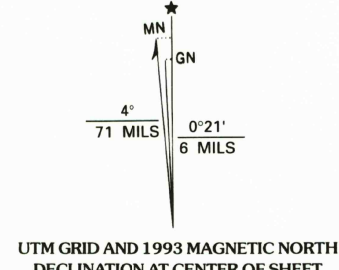
Produced by the United States Geological Survey
Control by USGS and NOS/NOAA

Planimetry by photogrammetric methods from aerial photographs taken 1949. Topography by planetable surveys 1951
Revised from aerial photographs taken 1987-88
Field checked 1989. Map edited 1993

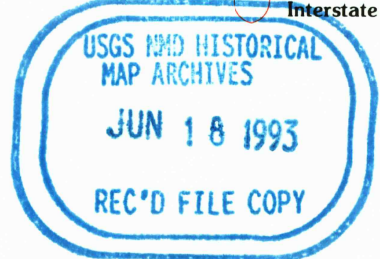
Projection and 10,000-foot grid ticks: Florida coordinate system, east zone (transverse Mercator)
1000-meter Universal Transverse Mercator grid, zone 17
1927 North American Datum (NAD 27)

North American Datum of 1983 (NAD 83) is shown by dashed corner ticks
The values of the shift between NAD 27 and NAD 83 for 7.5-minute intersections are given in USGS Bulletin 1875

There may be private inholdings within the boundaries of the National or State reservations shown on this map
Gray tint indicates areas in which only landmark buildings are shown



COMPLIES WITH U.S. GEOLOGICAL SURVEY STANDARDS FOR SPATIAL ACCURACY - CLASS 2
FOR SALE BY U.S. GEOLOGICAL SURVEY, DENVER, COLORADO 80225, OR RESTON, VIRGINIA 22092
A FOLDER DESCRIBING TOPOGRAPHIC MAPS AND SYMBOLS IS AVAILABLE ON REQUEST



ROAD CLASSIFICATION
Primary highway, hard surface
Secondary highway, hard surface
Unimproved road
Interstate Route
U.S. Route
State Route
Light-duty road, hard or improved surface
Unimproved road
U.S. Route
State Route
ORANGE PARK, FLA.
30081-86-T-024
1993
DMA 4644 II NW-SERIES V847