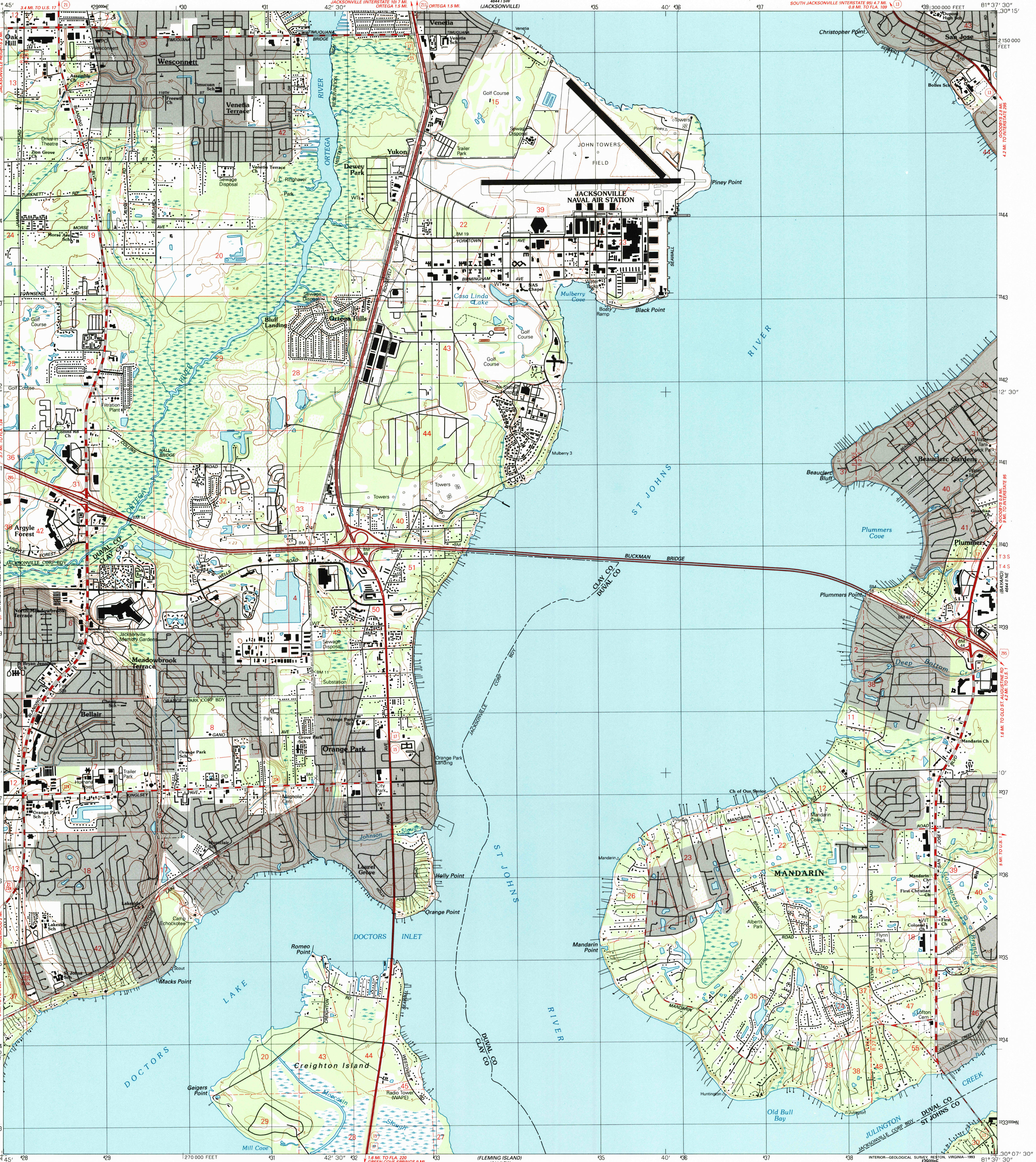


UNITED STATES
DEPARTMENT OF THE INTERIOR
GEOLOGICAL SURVEY

ORANGE PARK QUADRANGLE
FLORIDA
7.5 MINUTE SERIES (TOPOGRAPHIC)



Produced by the United States Geological Survey

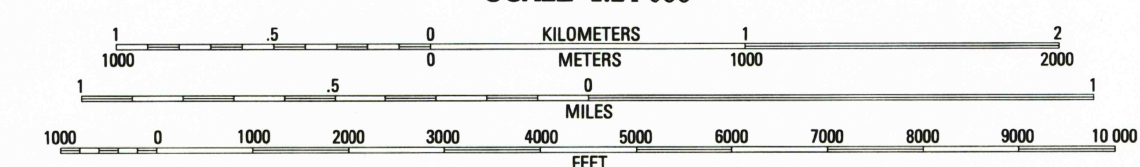
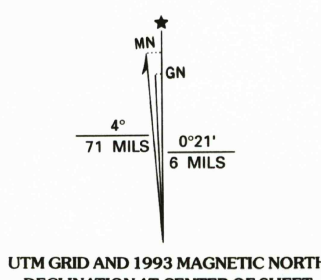
Control by USGS and NOS/NOAA

Planimetry by photogrammetric methods from aerial photographs taken 1949. Topography by planetable surveys 1951. Revised from aerial photographs taken 1987-88. Field checked 1989. Map edited 1993.

Projection and 10,000-foot grid ticks: Florida coordinate system, east zone (transverse Mercator). 1000-meter Universal Transverse Mercator grid, zone 17. 1927 North American Datum (NAD 27).

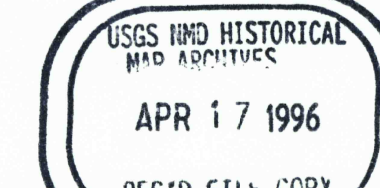
North American Datum of 1983 (NAD 83) is shown by dashed corner ticks. The values of the shift between NAD 27 and NAD 83 for 7.5-minute intersections are given in USGS Bulletin 1875.

There may be private inholdings within the boundaries of the National or State reservations shown on this map. Gray tint indicates areas in which only landmark buildings are shown.



CONTOUR INTERVAL 5 FEET
NATIONAL GEODETIC VERTICAL DATUM OF 1929

COMPLIES WITH U.S. GEOLOGICAL SURVEY STANDARDS FOR SPATIAL ACCURACY - CLASS 2
FOR SALE BY U.S. GEOLOGICAL SURVEY, DENVER, COLORADO 80225, OR RESTON, VIRGINIA 22092
A FOLDER DESCRIBING TOPOGRAPHIC MAPS AND SYMBOLS IS AVAILABLE ON REQUEST



ORANGE PARK, FLA.
30081-B6-TF-024
1993

DMA 4644 II NW-SERIES V847

